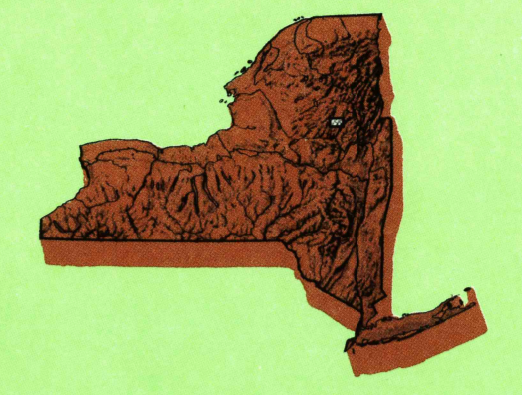


THIRTEENTH LAKE, NEW YORK

7.5 X 15 MINUTE SERIES (TOPOGRAPHIC)

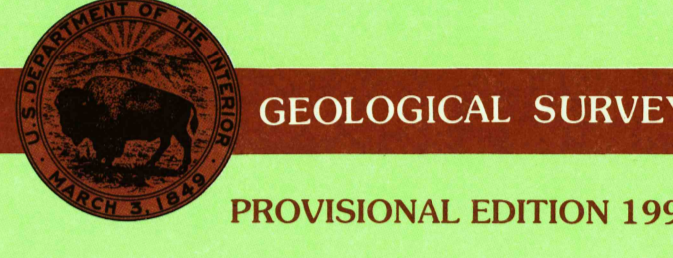
Thirteenth Lake NEW YORK

1:25 000-scale metric topographic map



7.5 X 15 MINUTE QUADRANGLE SHOWING

- Contours and elevations in meters
- Highways, roads and other manmade structures
- Water features
- Woodland areas
- Geographic names



PRODUCED BY THE UNITED STATES GEOLOGICAL SURVEY CONTROL BY USGS AND NOS/NOAA COMPILED FROM AERIAL PHOTOGRAPHS TAKEN 1983 AND 1985 FIELD CHECKED 1986 MAP EDITED 1990 PROJECTION UNIVERSAL TRANSVERSE MERCATOR GRID 1000-METER UNIVERSAL TRANSVERSE MERCATOR ZONE 18 10,000-FOOT STATE GRID TICKS NEW YORK EAST ZONE UTM GRID DECLINATION NEW YORK EAST ZONE 1990 MAGNETIC NORTH DECLINATION 14.30 WEST VERTICAL DATUM NATIONAL GEODETIC VERTICAL DATUM OF 1929 HORIZONTAL DATUM 1927 NORTH AMERICAN DATUM

To place on the predicted North American Datum of 1983, move the projection lines as shown by dashed corner ticks (3 meters south and 33 meters west)

There may be private inholdings within the boundaries of any Federal or State reservations shown on this map. No distinction made between houses, barns, and other buildings.

CONTOUR INTERVAL 6 METERS NATIONAL GEODETIC VERTICAL DATUM OF 1929

CONTROL AND FIELD ESTABLISHED ELEVATIONS SHOWN TO THE NEAREST 0.1 METER OTHER ELEVATIONS SHOWN TO THE NEAREST METER

THIS MAP COMPLIES WITH NATIONAL MAP ACCURACY STANDARDS

CONVERSION TABLE

Meters	Feet
1	3.2808
2	6.5617
3	9.8425
4	13.1234
5	16.4042
6	19.6850
7	22.9659
8	26.2467
9	29.5275
10	32.8084

To convert meters to feet multiply by 3.2808
To convert feet to meters multiply by 0.3048

ADJOINING MAPS

1	2	3
4	5	6
7	8	

1 Blue Mt. Lakes
2 Dutton Mountain
3 Schroon Lakes
4 Indian Lake
5 North Creek 7.5
6 Peak Mountain
7 Bakers Mills
8 Johnsburg 7.5

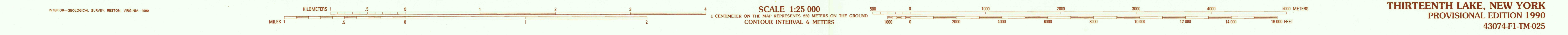
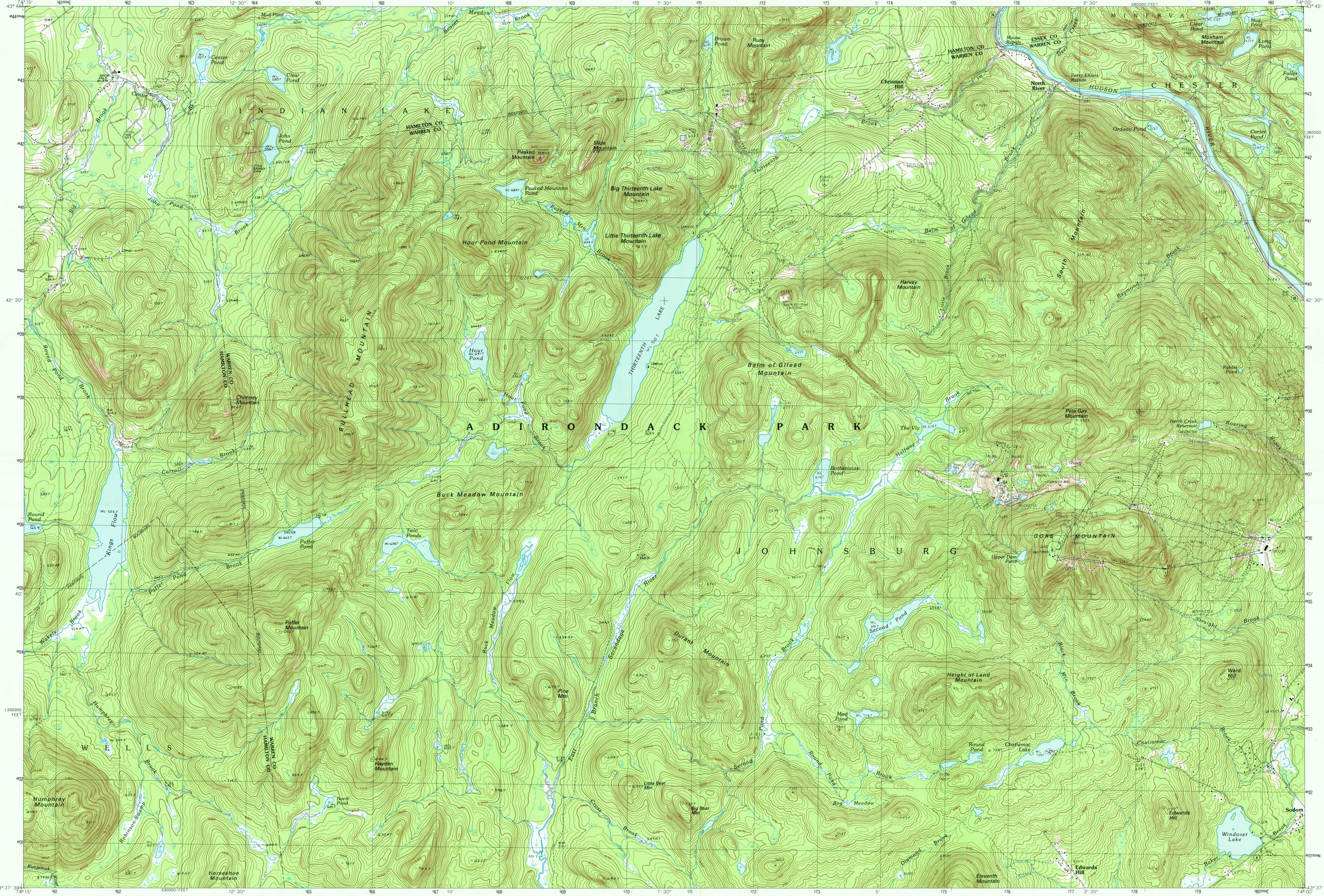
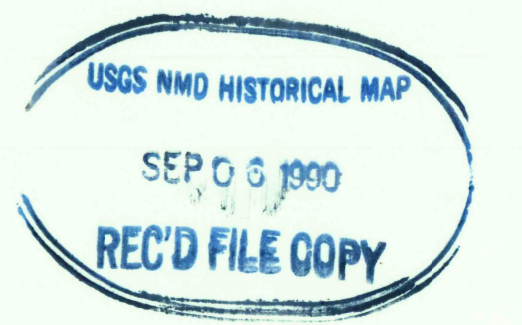
FOR SALE BY U.S. GEOLOGICAL SURVEY DENVER, COLORADO 80225, OR RESTON, VIRGINIA 22092

ROAD LEGEND

Improved Road
Unimproved Road
Trail

○ Interstate Route ○ U.S. Route ○ State Route

PROVISIONAL MAP Produced from original manuscript drawings. Information shown as of date of photography. 1



THIRTEENTH LAKE, NEW YORK PROVISIONAL EDITION 1990 43074-F1-TM-025