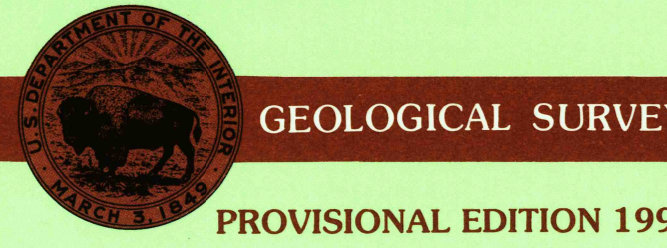


7.5 X 15 MINUTE QUADRANGLE  
SHOWING

- Contours and elevations in meters
- Highways, roads and other manmade structures
- Water features
- Woodland areas
- Geographic names



PRODUCED BY THE UNITED STATES GEOLOGICAL SURVEY  
 CONTROL BY.....USGS AND NSG-NOAA  
 COMPILED FROM AERIAL PHOTOGRAPHS TAKEN.....1983  
 FIELD CHECKED.....1986. MAP EDITED.....1990  
 PROJECTION.....UNIVERSAL TRANSVERSE MERCATOR  
 GRID: 1000-METER UNIVERSAL TRANSVERSE MERCATOR.....ZONE 18  
 10,000-FOOT STATE GRID TICKS.....NEW YORK EAST ZONE  
 UTM DECLINATION.....0°16' EAST  
 1990 MAGNETIC NORTH DECLINATION.....1°27' WEST  
 VERTICAL DATUM.....NATIONAL GEODETIC VERTICAL DATUM OF 1929  
 HORIZONTAL DATUM.....1927 NORTH AMERICAN DATUM  
 To place on the predicted North American Datum of 1983,  
 move the projection lines as shown by dashed corner ticks  
 (3 meters south and 31 meters west)  
 There may be private inholdings within the boundaries of any  
 Federal or State reservations shown on this map  
 No distinction made between houses, barns, and other buildings

CONTOUR INTERVAL 6 METERS

CONTROL AND FIELD ESTABLISHED ELEVATIONS  
SHOWN TO THE NEAREST 0.1 METER  
OTHER ELEVATIONS SHOWN TO THE NEAREST METER

THIS MAP COMPLIES WITH NATIONAL MAP ACCURACY STANDARDS

FOR SALE BY U.S. GEOLOGICAL SURVEY  
DENVER, COLORADO 80225, OR RESTON, VIRGINIA 22092

CONVERSION TABLE

Meters	Feet
1	3.2808
2	6.5617
3	9.8425
4	13.1234
5	16.4043
6	19.6852
7	22.9660
8	26.2469
9	29.5278
10	32.8084

To convert meters to feet  
multiply by 3.2808  
To convert feet to meters  
multiply by 0.3048

ADJOINING MAPS

1	2	3
4	5	6
7	8	

- 1 Old Forge
- 2 Wakely Mountain
- 3 Indian Lake
- 4 Homedags Lake
- 5 Page Mountain
- 6 Morehouseville
- 7 Pease Lake
- 8 Wells

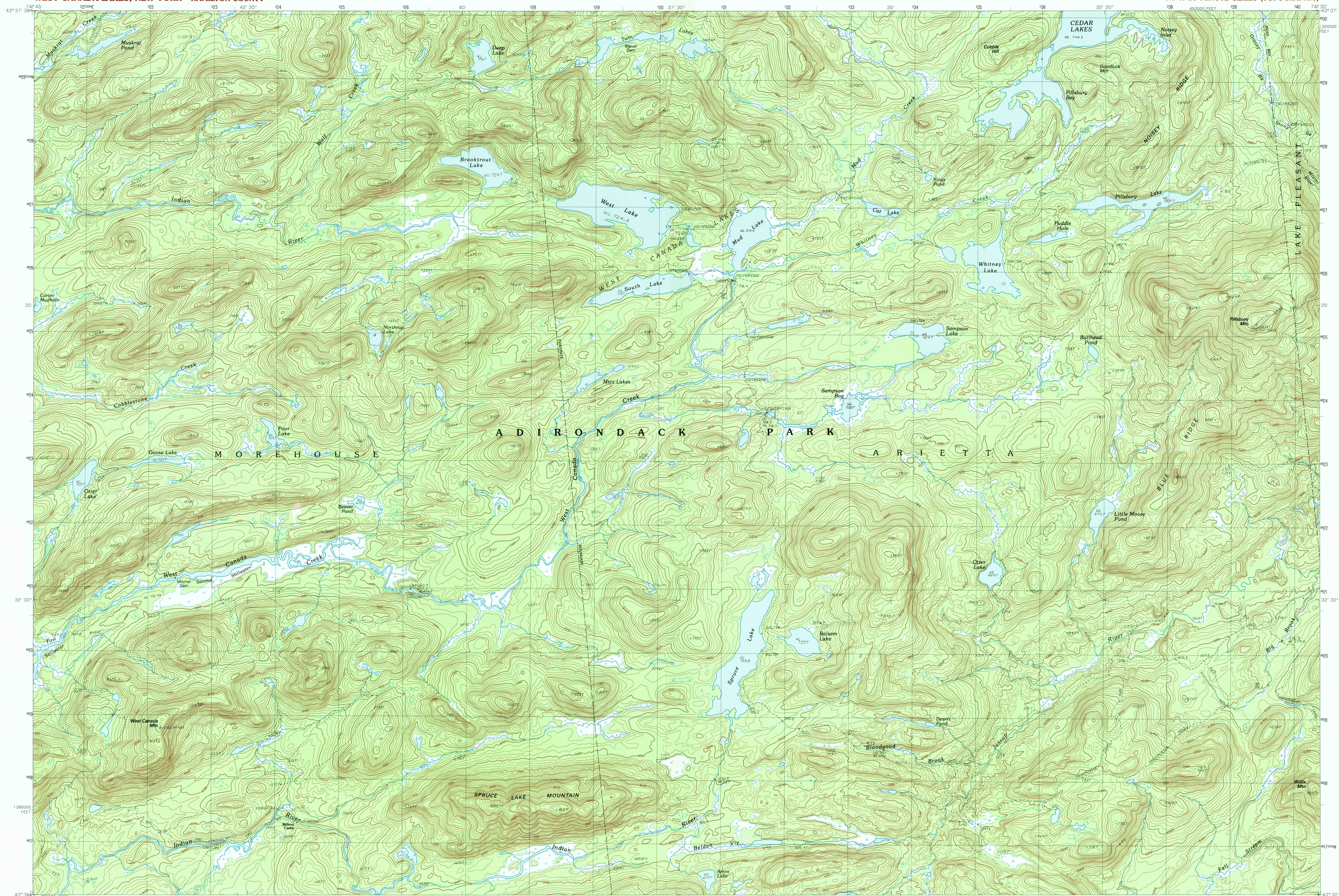
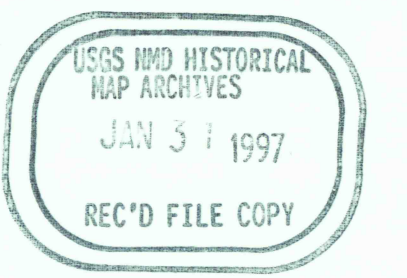


ROAD LEGEND

- Improved Road
- Unimproved Road
- Trail
- Interstate Route
- U.S. Route
- State Route

PROVISIONAL MAP

Produced from original  
manuscript drawings. Infor-  
mation shown as of date of  
photography.



SCALE 1:25 000  
1 CENTIMETER ON THE MAP REPRESENTS 250 METERS ON THE GROUND  
CONTOUR INTERVAL 6 METERS