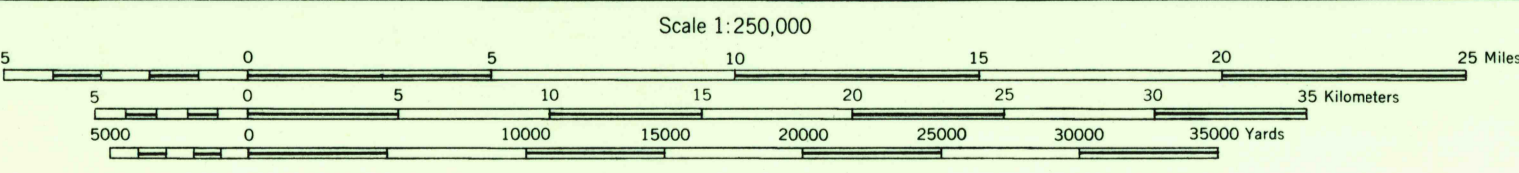




Prepared under the direction of the Chief of Engineers by the Army Map Service (AM), Corps of Engineers, Department of the Army, Washington, D. C. Compiled in 1948 from United States Quadrangles, 1:62,500, U. S. Geological Survey and Corps of Engineers, 1892-1947; County Highway Maps, 1942-1945; and intelligence data to 1947. Photometric detail partially revised by photogrammetric methods. Aerial photography, 1939-1945. Roads, railroad, and aeronautical data verified by State Authorities, 1948. Control by U. S. Coast and Geodetic Survey and U. S. Geological Survey.



Scale 1:250,000  
 DATUM IS MEAN SEA LEVEL  
 CONTOUR INTERVAL 100 FEET  
 TRANSVERSE MERCATOR PROJECTION  
 1927 NORTH AMERICAN DATUM  
 100,000-FOOT GRID BASED ON VERMONT COORDINATE SYSTEM AND NEW YORK COORDINATE SYSTEM, EAST ZONE.  
 10,000-METER UNIVERSAL TRANSVERSE MERCATOR GRID TICKS, ZONE 18, SHOWN IN BLUE  
 THE HORIZONTAL RELATIONSHIP FOR THIS MAP IS BASED ON THE MEAN SEA LEVEL DATUM FOR THE CENTER OF THE MAP  
 DATE TO "00" RESEMBLY FOR THE CENTER OF THE EAST COAST, NEW AMSTERDAM, CHANGING TO "00" SYSTEM

FOR SALE BY U. S. GEOLOGICAL SURVEY, WASHINGTON 25, D. C.

**LEGEND**  
 ROAD DATA 1949

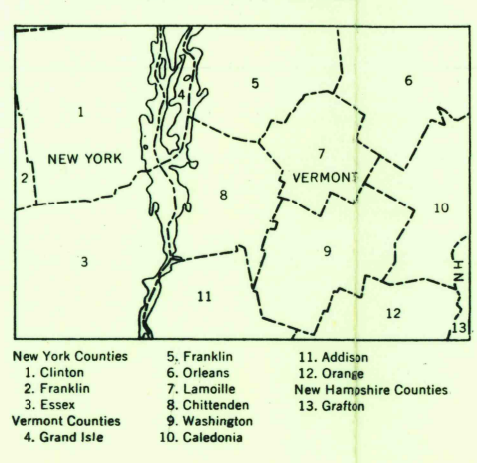
Small, Large built-up area	Hard surface, heavy duty road, more than two lanes wide	3 LANES, 4 LANES
500,000 or over	Hard surface, heavy duty road, two lanes wide	2 LANES, 4 LANES
100,000 to 500,000	Hard surface, medium duty road, four to three lanes wide	2 LANES, 4 LANES
25,000 to 100,000	Hard surface, medium duty road, two lanes wide	2 LANES, 4 LANES
5,000 to 25,000	Loose surface, graded and drained road	
1,000 to 5,000	Old Dominion	
1,000 or less	Dist. road; Trail	
	Stowell	Route markers: Federal; State

**RAILROADS**  
 Standard gauge: Single track, Multiple track, Woodland  
 Narrow gauge

**BOUNDARIES**  
 International: Principal navigation line, Military airfield, Municipal or commercial airfield, Park and reservation  
 State: Horizontal control point, Spot elevation in feet

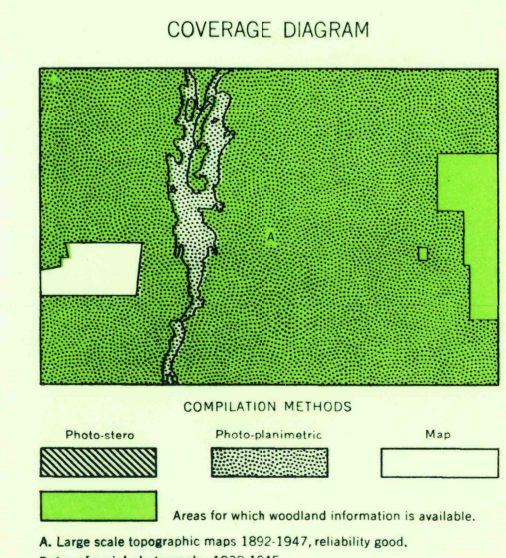
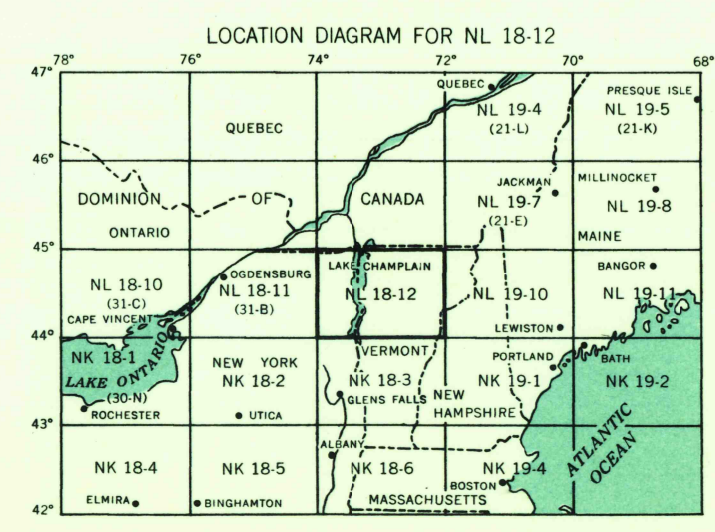
**INDEX TO BOUNDARIES**

1. New York Counties	5. Franklin	11. Addison
2. Chittenden	6. Orleans	12. Orange
3. Essex	7. Lamoille	13. Chittenden
4. Washington	8. Chittenden	14. Washington
	9. Washington	15. Caledonia
	10. Caledonia	



USGS  
 Historical File  
 Topographic Division

INTERIOR-GEOLOGICAL SURVEY, WASHINGTON, D. C.—1958  
 MR 5012



LAKE CHAMPLAIN, UNITED STATES  
 N4400-W7200/100x200

U.S.G.S.  
 FILE COPY  
 TOPOGRAPHIC DIVISION