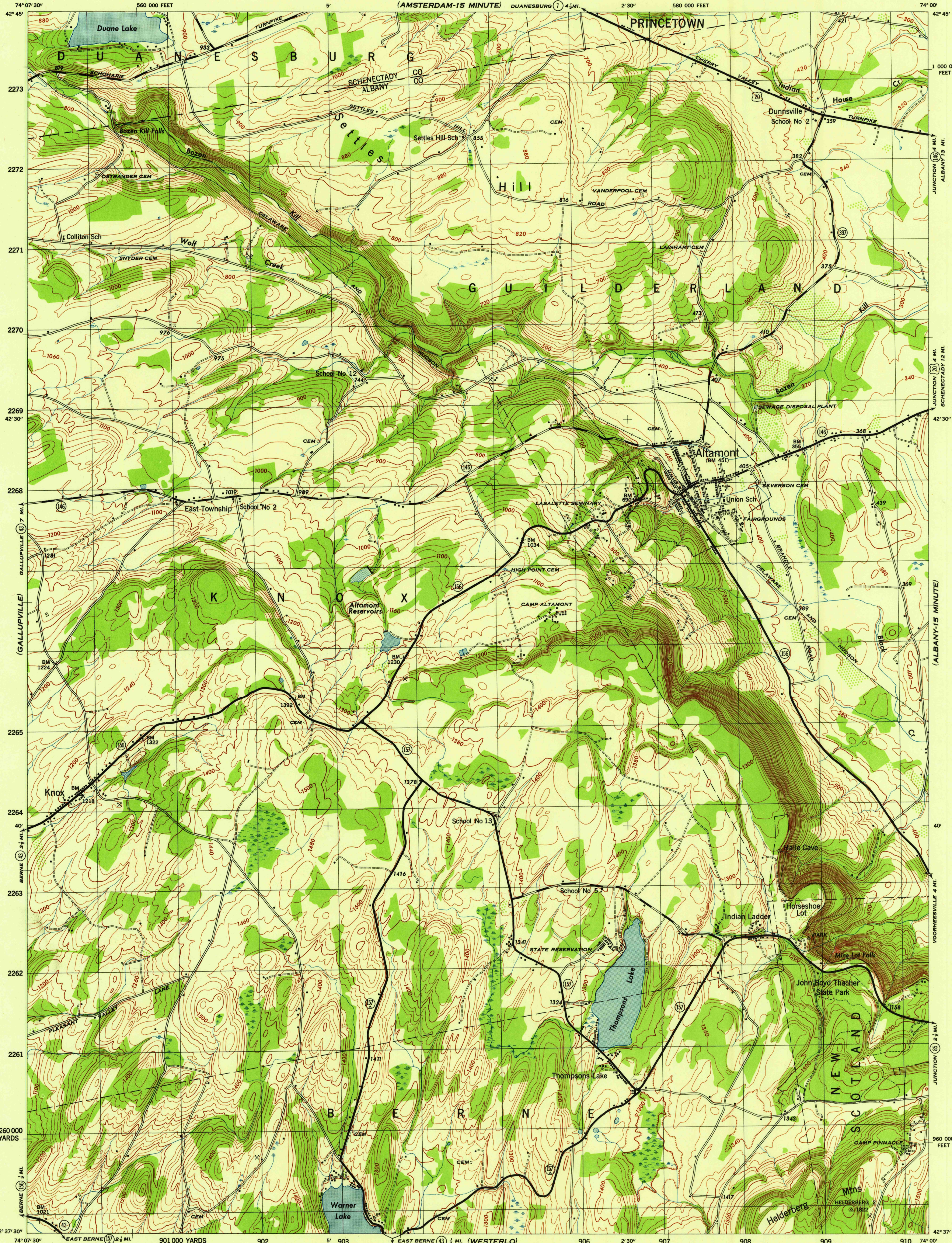


NEW YORK  
SCALE 1:31,680

WAR DEPARTMENT  
CORPS OF ENGINEERS, U. S. ARMY

ALTAMONT QUADRANGLE  
7 1/2-MINUTE SERIES



Map of Tennessee Valley Authority under direction of the Chief of Engineers, U. S. Army, 1944.  
Control by USCGS and TVA.  
Topography by U. S. Geological Survey and Tennessee Valley Authority by Stereophotogrammetric methods (Multiplex).  
Field completion surveys by TVA.  
Wide-angle photography for TVA, 1942 and 1943.  
Polyconic projection. 1927 North American datum.

Scale 1:31,680  
1 000 500 0 1000 2000 Yards

CONTOUR INTERVAL 20 FEET  
DATUM IS MEAN SEA LEVEL

ONE THOUSAND YARD GRID COMPUTED FROM "GRID SYSTEM FOR PROGRESSIVE MAPS IN THE U. S." ZONE A. U. S. G. S. SPECIAL PUBLICATION NO. 89. THE LAST THREE DIGITS OF THE GRID NUMBERS ARE OMITTED.  
TEN THOUSAND FOOT GRID BASED ON NEW YORK PLANE COORDINATE SYSTEM, EASTERN ZONE.  
NOTE: OFFICES USING THIS MAP WILL FIND NEARBY CORRECTIONS AND NOTATIONS WHICH COME TO THEIR ATTENTION AND MAIL DIRECT TO THE ARMY MAP SERVICE, WASHINGTON, D. C.

APPROXIMATE MEAN DECLINATION 1946  
ANNUAL MAGNETIC CHANGE 1/2" INCREASE

USGS  
HISTORICAL FILE  
TOPOGRAPHIC DIVISION

ALTAMONT, N. Y.  
N4237.5-W7400/7.5  
EDITION OF 1946

ROAD CLASSIFICATION 1944  
Dependable hard-surface, heavy-duty road. Loose-surface graded, dry weather road. U. S. Route 201  
Secondary, hard-surface, all-weather road. Dirt road. State Route 5  
More than two lanes indicated by note along road with tick at point of change. 3 LANE 4 LANE

THIS MAP COMPLIES WITH THE NATIONAL STANDARD MAP ACCURACY REQUIREMENTS.