

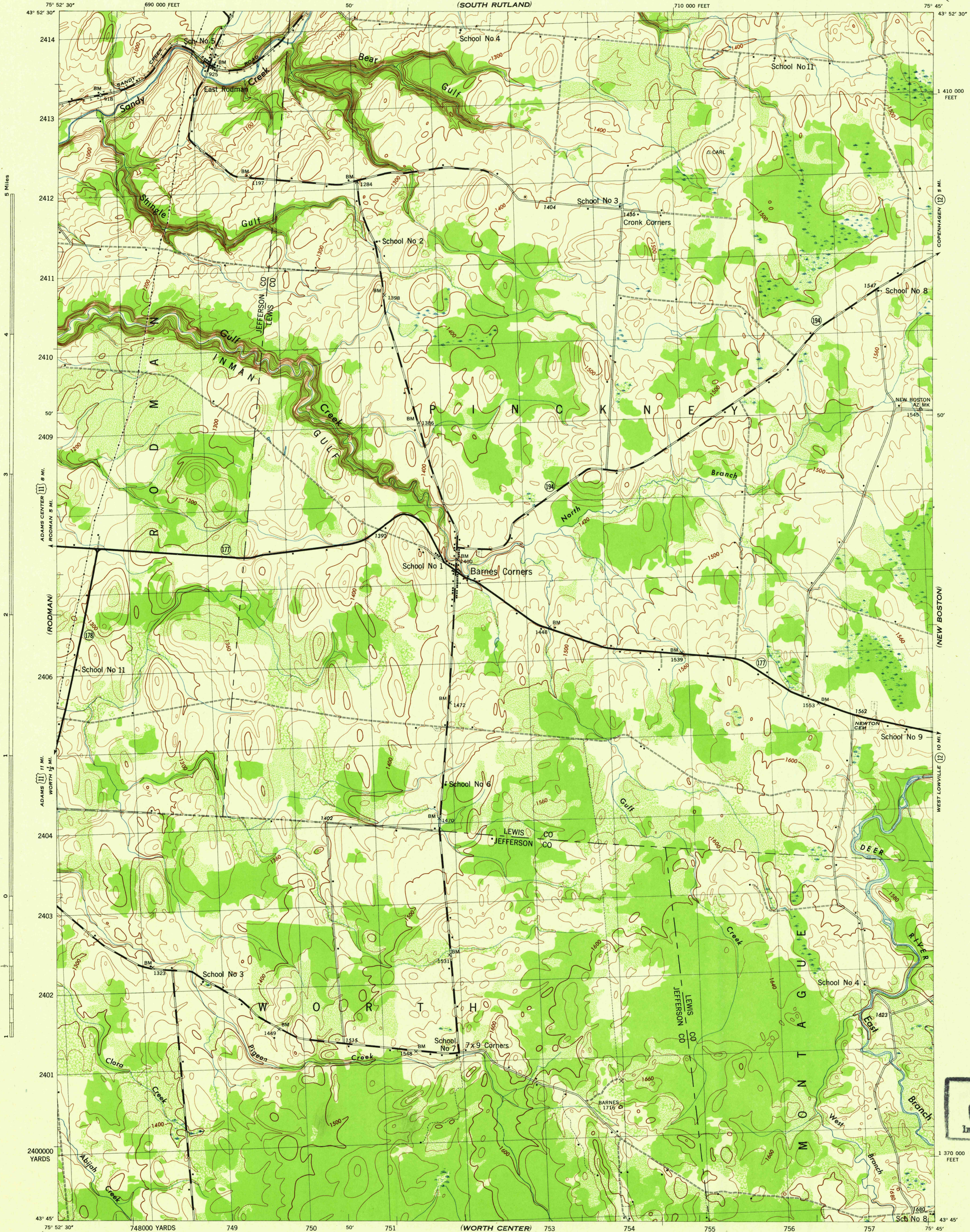
(WATERTOWN)

NEW YORK 1:31,680

WAR DEPARTMENT
CORPS OF ENGINEERS, U. S. ARMY

BARNES CORNERS QUADRANGLE
7 1/2 - MINUTE SERIES

(COPENHAGEN)



5 Miles

4 Miles

3 Miles

2 Miles

1 Mile

0 Miles

0 Miles

0 Miles

Maped by Tennessee Valley Authority under direction of the
Chief of Engineers, U. S. Army, 1943.
Control by USCGS and TVA.
Topography by U. S. Geological Survey and Tennessee Valley Authority
by Stereophotogrammetric methods (Multiplex)
Field completion surveys by TVA, 1942.
Wide-angle photography for TVA, 1942.
Polyconic projection, 1927 North American datum.

ROAD CLASSIFICATION
1943
Loose-surface graded,
heavy-duty road. U. S. Route 177
Secondary, hard-surface,
all-weather road. Dirt road. State Route 177
More than two lanes indicated by note along road with tick at point of change.

THIS MAP COMPLIES WITH THE NATIONAL STANDARD MAP ACCURACY REQUIREMENTS.

Scale 1:31,680

1 000 500 0 1000 2000 Yards

CONTOUR INTERVAL 20 FEET
DATUM IS MEAN SEA LEVEL

ONE THOUSAND YARD GRID COMPUTED FROM "GRID SYSTEM FOR PROGRESSIVE MAPS
IN THE U. S. ZONE A, U. S. C. & S. SPECIAL PUBLICATION NO. 59"
THE LAST THREE DIGITS OF THE GRID NUMBERS ARE OMITTED
TEN THOUSAND FOOT GRID BASED ON NEW YORK PLANE COORDINATE SYSTEM, CENTRAL ZONE
NOTE: OFFICERS USING THIS MAP WILL WANT REPAIR CORRECTIONS AND ADDITIONS WHICH COME
TO THEIR ATTENTION AND MAIL DIRECT TO "THE CHIEF OF ENGINEERS, WASHINGTON, D. C."

USGS
Historical File
Topographic Division

APPROXIMATE MEAN
DECLINATION 1942
ANNUAL MAGNETIC CHANGE 0'

WOODLAND CLASSIFICATION

Dense woodland	
Dense brush	
Scattered brush and trees	
Orchard	
Vineyard	

BARNES CORNERS, N. Y.
N4345-W7545/7.5
EDITION OF 1943

U. S. G. S.
FILE COPY
Inspection and Editing.