

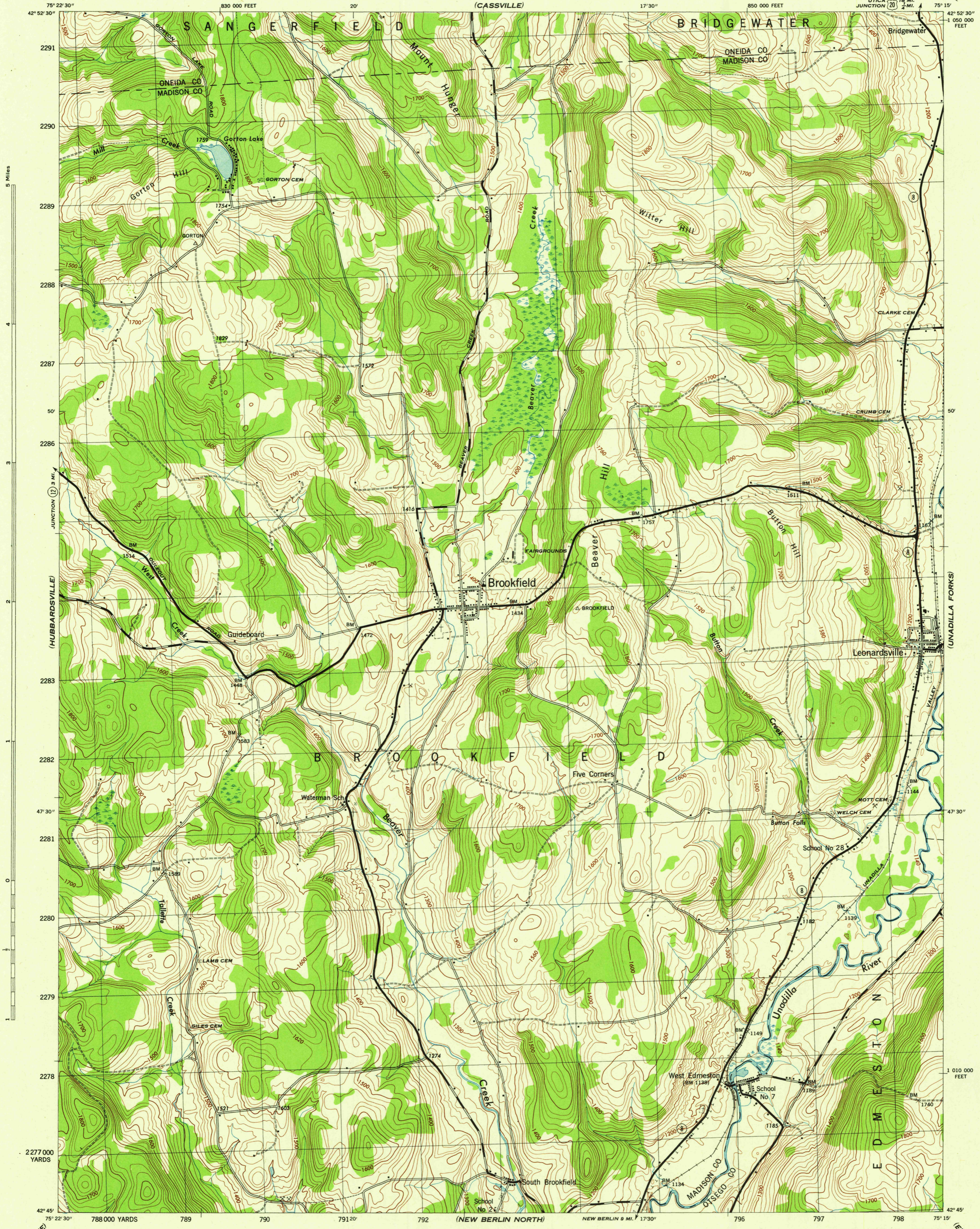
(ORISKANY FALLS)

NEW YORK
SCALE 1:31,680

WAR DEPARTMENT
CORPS OF ENGINEERS, U. S. ARMY

BROOKFIELD QUADRANGLE
7½-MINUTE SERIES

(WEST WINFIELD)



Maped by Tennessee Valley Authority under direction of the
Chief of Engineers, U. S. Army, 1943.
Control by USCGS and TVA.
Topography by U. S. Geological Survey and Tennessee Valley Authority
by Stereophotogrammetric methods (Multiplex).
Field completion surveys by TVA.
Wide-angle photography by TVA, 1942.
Polyconic projection, 1927 North American Datum.

ROAD CLASSIFICATION
1943
Dependable hard-surface, heavy-duty road. U. S. Route
Secondary, hard-surface, all-weather road. State Route
Loose-surface graded, dry weather road. 3 LANE 4 LANE
Dirt road. 7

MORE THAN TWO LANES INDICATED BY NOTE ALONG ROAD WITH TICK AT POINT OF CHANGE.

THIS MAP COMPLIES WITH THE NATIONAL STANDARD MAP ACCURACY REQUIREMENTS.

Scale 1:31,680
1 000 500 0 1000 2000 Yards
CONTOUR INTERVAL 20 FEET
DATUM IS MEAN SEA LEVEL

ONE THOUSAND YARD GRID COMPUTED FROM "GRID SYSTEM FOR PROGRESSIVE MAPS
IN THE U. S. ZONE A U. S. C. & G. S. SPECIAL PUBLICATION NO. 59
THE LAST THREE DIGITS OF THE GRID NUMBERS ARE OMITTED
TEN THOUSAND FOOT GRID BASED ON NEW YORK PLANE COORDINATE SYSTEM, CENTRAL ZONE
NOTE: OFFICIALS USING THIS MAP WILL MAKE NECESSARY CORRECTIONS AND ADJUSTMENTS WHICH COME
TO THEIR ATTENTION AND MAIL DIRECT TO "THE CHIEF OF ENGINEERS, WASHINGTON, D. C."

APPROXIMATE MEAN
DECLINATION 1945
ANNUAL MAGNETIC CHANGE 0°

USGS
Historical File
Topographic Division

BROOKFIELD, N. Y.
N4245-W7515/7.5
EDITION OF 1945