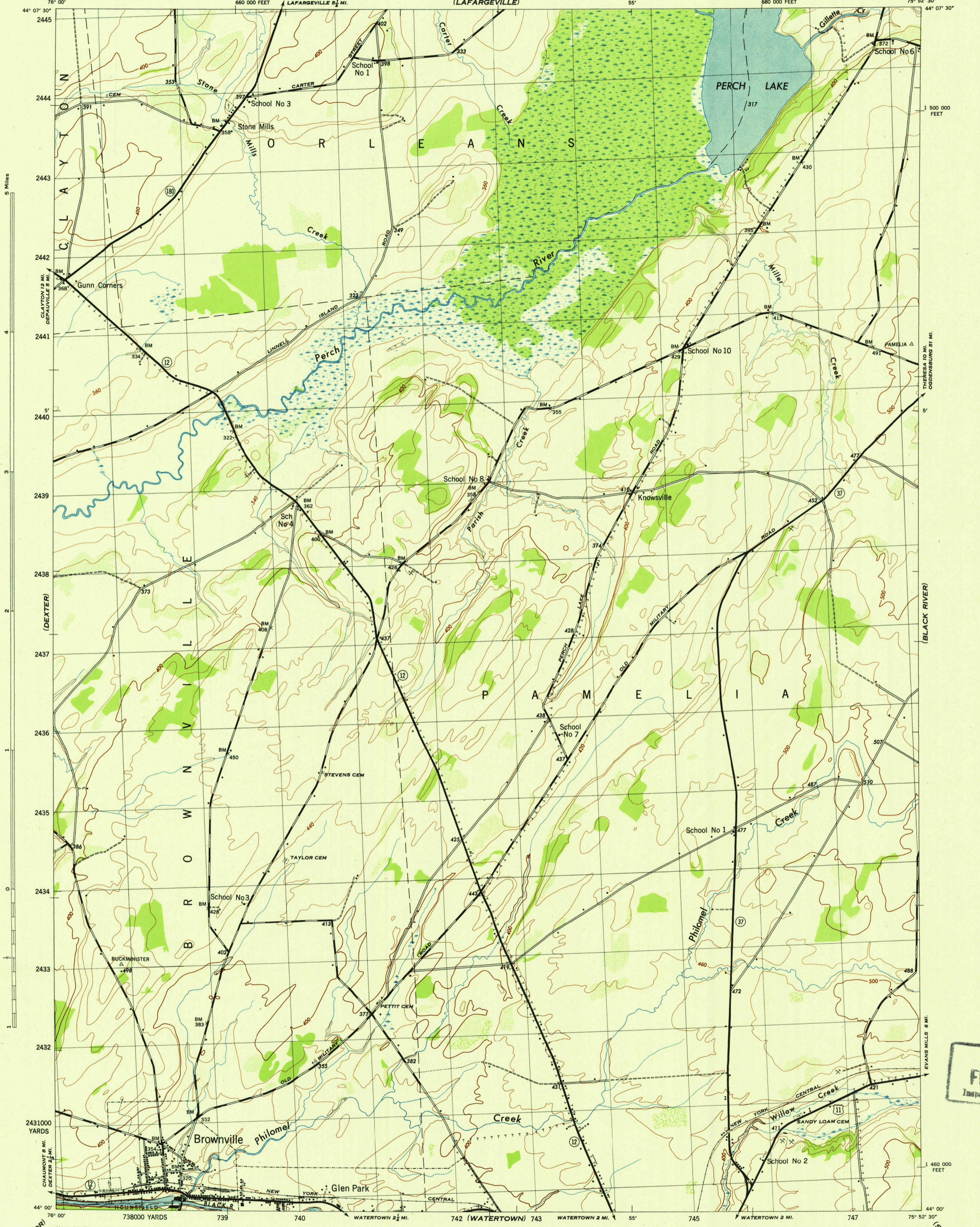


NEW YORK  
(JEFFERSON COUNTY)  
BROWNVILLE QUADRANGLE  
GRID ZONE "A"

WAR DEPARTMENT  
CORPS OF ENGINEERS, U. S. ARMY

NEW YORK  
(JEFFERSON COUNTY)  
BROWNVILLE QUADRANGLE  
GRID ZONE "A"



CLAYTON  
1 2 3 4 5  
5 Miles

(DEXTER)

BROWNVILLE

CHALKMONT 8 MI.  
DEXTER 1/2 MI.

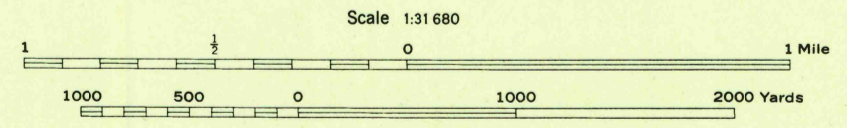
ISACKETS HARBOR

Maped by Tennessee Valley Authority under direction of the Chief of Engineers, U. S. Army, 1942.  
Control by USGS, USGS, and TVA.  
Topography by Tennessee Valley Authority plane-table surveys.  
Culture and drainage in part compiled from aerial photographs.  
Wide-angle photography for TVA, 1942.  
Polyconic projection, 1927 North American datum.

**ROAD CLASSIFICATION**

Dependable hard-surface, heavy-duty road. U. S. Route 11  
Secondary, hard-surface, all-weather road. State Route 37  
Loose-surface graded, dry weather road.  
Dirt road.  
More than two lanes indicated by note along road with tick at point of change. 2 LANE, 4 LANE

THIS MAP COMPLIES WITH THE NATIONAL STANDARD MAP ACCURACY REQUIREMENTS.



Scale 1:31 680  
CONTOUR INTERVAL 20 FEET  
DATUM IS MEAN SEA LEVEL

ONE THOUSAND YARD GRID COMPUTED FROM "GRID SYSTEM FOR PROGRESSIVE MAPS IN THE U. S." ZONE A, U. S. C. & G. S. SPECIAL PUBLICATION NO. 89  
THE LAST THREE DIGITS OF THE GRID NUMBERS ARE OMITTED  
TEN THOUSAND FOOT GRID BASED ON NEW YORK PLANE COORDINATE SYSTEM, CENTRAL ZONE  
NOTE: DRIVERS USING THIS MAP WILL MARK FRESH CORRECTIONS AND ADDITIONS WHICH COME TO THEIR ATTENTION AND MAIL DIRECT TO "THE CHIEF OF ENGINEERS, WASHINGTON, D. C."

USGS  
Historical File  
Topographic Division

APPROXIMATE MEAN DECLINATION 1942  
ANNUAL MAGNETIC CHANGE 0'

BROWNVILLE, N. Y.  
N4400-W7552.5/7.5  
EDITION OF 1943

U. S. G. S.  
FILE COPY  
Inspection and Printing

WOODLAND CLASSIFICATION  
Dense woodland  
Dense brush  
Scattered brush and trees  
Orchard  
Vineyard

(SOUTH RUTLAND)