

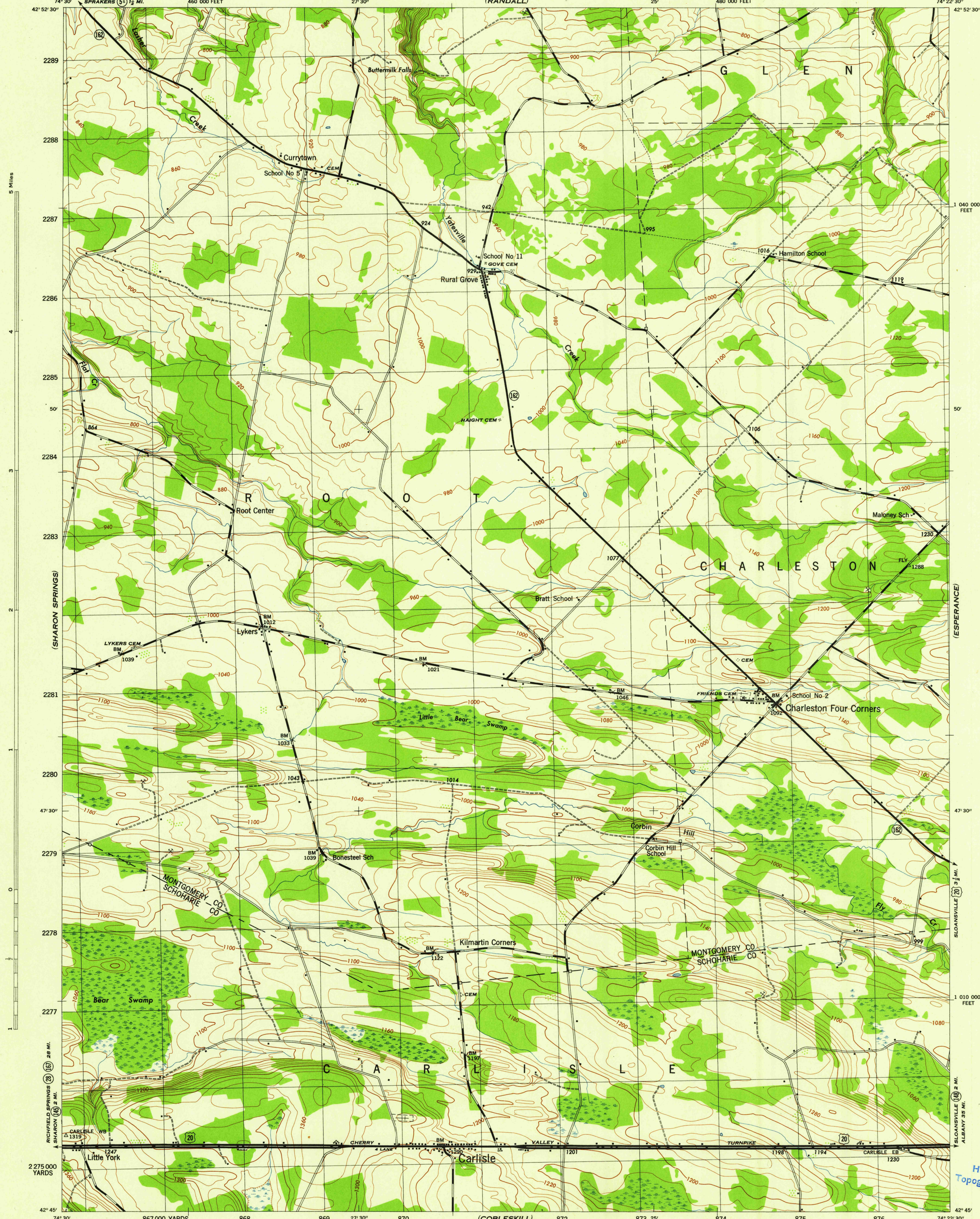
(CANAJOHARIE)

NEW YORK
SCALE 1:31,680

WAR DEPARTMENT
CORPS OF ENGINEERS, U. S. ARMY

CARLISLE QUADRANGLE
7 1/2-MINUTE SERIES

(TRIBES HILL)

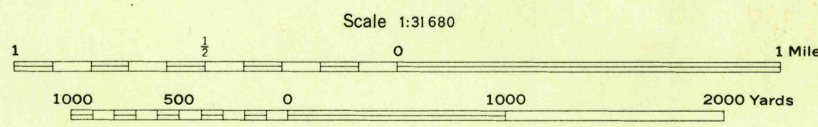


(RICHMONDVILLE)

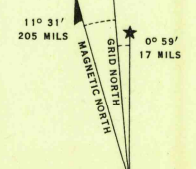
Map by Tennessee Valley Authority under direction of the
Chief of Engineers, U. S. Army, 1943.
Control by USACGS and TVA.
Topography by U. S. Geological Survey and Tennessee Valley Authority
by Stereophotogrammetric methods (Multiplex).
Field completion surveys by TVA.
Wide-angle photography for TVA, 1942.
Polyconic projection. 1927 North American datum.

ROAD CLASSIFICATION
1943
Dependable hard-surface, heavy-duty road. U. S. Route (20)
Secondary, hard-surface, all-weather road. State Route (7)
Dirt road. 3 LANE 4 LANE
More than two lanes indicated by note along road with tick at point of change.

THIS MAP COMPLIES WITH THE NATIONAL STANDARD MAP ACCURACY REQUIREMENTS.



ONE THOUSAND YARD GRID COMPUTED FROM "GRID SYSTEM FOR PROGRESSIVE MAPS
IN THE U. S. S. ZONE A, U. S. C. & G. S. SPECIAL PUBLICATION NO. 89
THE LAST THREE DIGITS OF THE GRID NUMBERS ARE OMITTED
TEN THOUSAND FOOT GRID BASED ON NEW YORK PLANE COORDINATE SYSTEM, EASTERN ZONE
NOTE: OFFICERS USING THIS MAP WILL MARK HERE CORRECTIONS AND ADDITIONS WHICH COME
TO THEIR ATTENTION AND MAIL DIRECT TO "THE CHIEF OF ENGINEERS, WASHINGTON, D. C."



REPRODUCED BY THE TENNESSEE VALLEY AUTHORITY
1943-40-14198
U. S. G. S.
FILE COPY
Inspection and Mailing.

CARLISLE, N. Y.
N4245-W7422.5/7.5
EDITION OF 1945

USGS
Historical File
Topographic Division

(SCHOHARIE)