

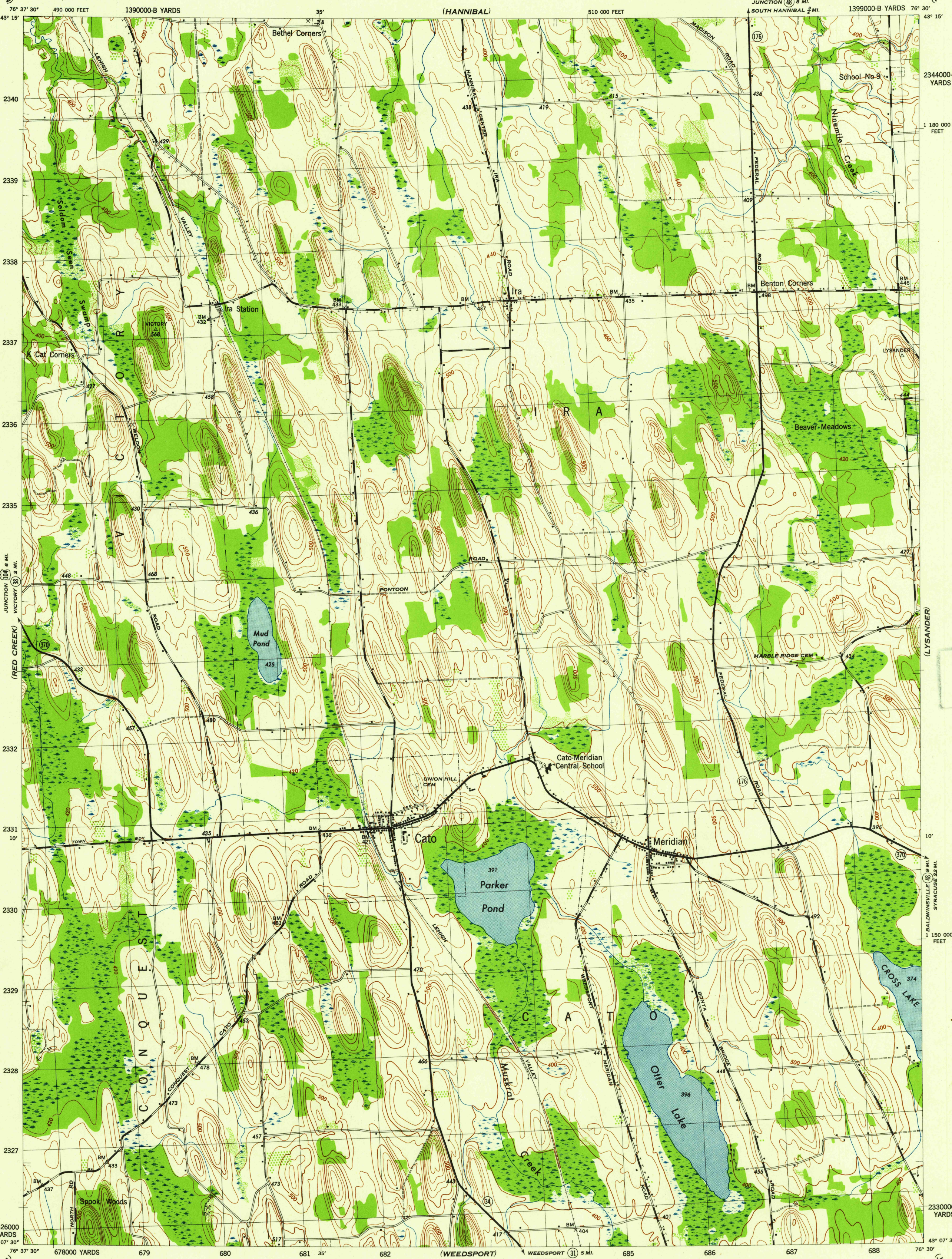
(FAIR HAVEN)
76° 37' 30" 490 000 FEET
1390000-B YARDS
43° 15'
2340
2339
2338
2337
2336
2335
2334
2333
2332
2331
2330
2329
2328
2327
2326000 YARDS
43° 07' 30"

NEW YORK 1:31,680
(CAYUGA COUNTY)

WAR DEPARTMENT
CORPS OF ENGINEERS, U. S. ARMY

CATO QUADRANGLE
7½-MINUTE SERIES

(FULTON)



U. S. G. S.
FILE COPY
Inspection and Cataloging

Map by Tennessee Valley Authority under direction of the Chief of Engineers, U. S. Army, 1943.
Control by USCGS, USGS, and TVA.
Topography by U. S. Geological Survey and Tennessee Valley Authority by Stereophotogrammetric methods (Multiplex).
Field completion surveys by TVA.
Wide-angle photography for TVA, 1942.
Polyconic projection, 1927 North American datum.

ROAD CLASSIFICATION
Dependable hard-surface, heavy-duty road. U. S. Route 67
Secondary, hard-surface, all-weather road. State Route 20
Dirt road.
More than two lanes indicated by note along road with tick at point of change. 3 LANE 4 LANE

Scale 1:31,680
1 000 500 0 1000 2000 Yards
CONTOUR INTERVAL 20 FEET
DATUM IS MEAN SEA LEVEL

ONE THOUSAND YARD GRID COMPUTED FROM "GRID SYSTEM FOR PROGRESSIVE MAPS IN THE U. S.," ZONE A, U. S. C. & G. S. SPECIAL PUBLICATION NO. 59
THE LAST THREE DIGITS OF THE GRID NUMBERS ARE OMITTED
TEN THOUSAND FOOT GRID BASED ON NEW YORK PLANE COORDINATE SYSTEM, CENTRAL ZONE
NOTE: OFFICIALS USING THIS MAP WILL HAVE CHECK CORRECTIONS AND ADDITIONS WHICH COME TO THEIR ATTENTION AND WILL DIRECT TO "THE CHIEF OF ENGINEERS, WASHINGTON, D. C."

USGS
Historical File
Topographic Division

APPROXIMATE MEAN
DECLINATION 1943
ANNUAL MAGNETIC CHANGE 1/2
DECREASE

WOODLAND CLASSIFICATION
Dense woodland
Dense brush
Scattered brush and trees
Orchard
Vineyard

CATO, N. Y.
N4307.5-W7630.7.5
EDITION OF 1943