

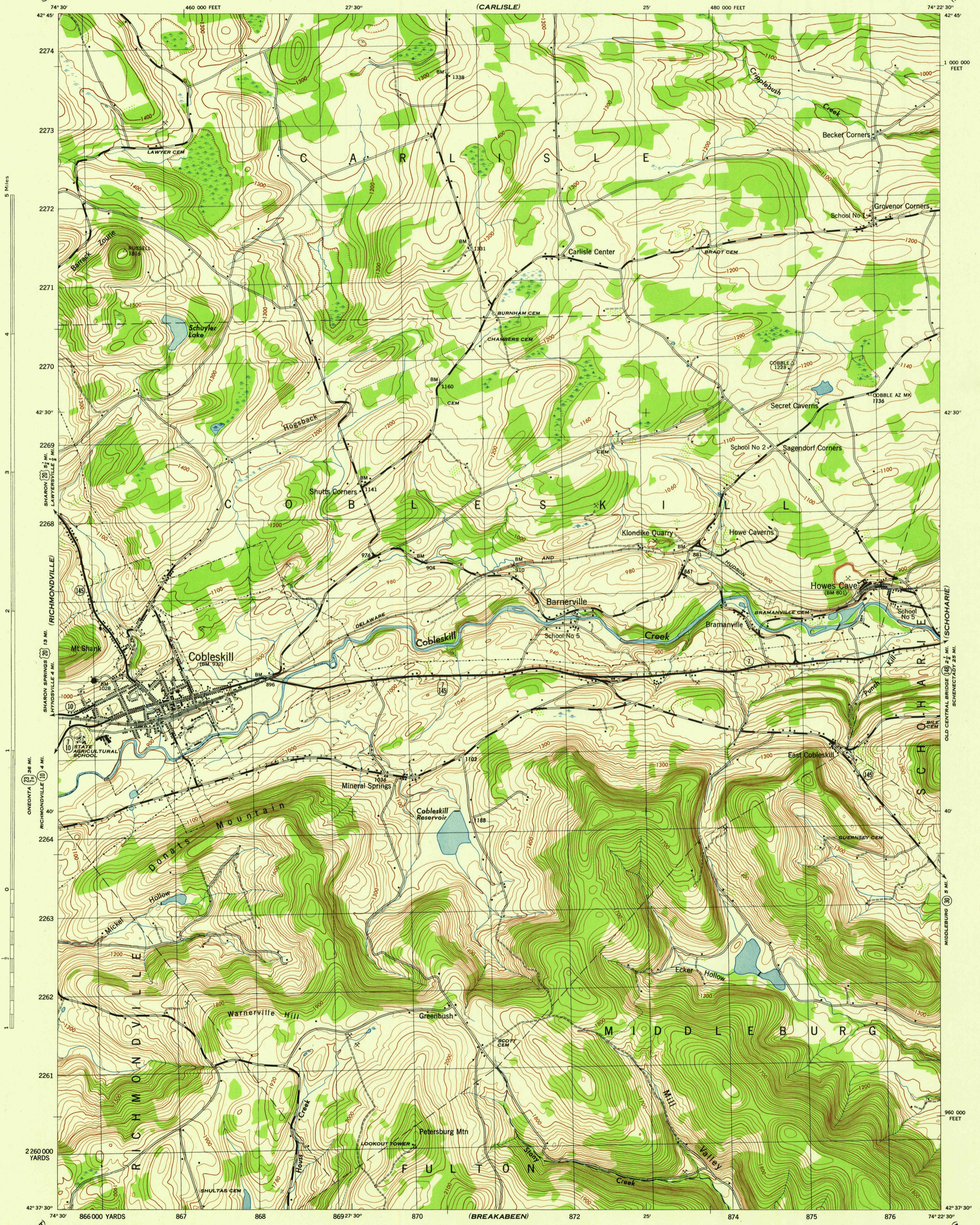
(SHARON SPRINGS)

NEW YORK 1:31,680  
(SCHOHARIE COUNTY)

WAR DEPARTMENT  
CORPS OF ENGINEERS, U. S. ARMY

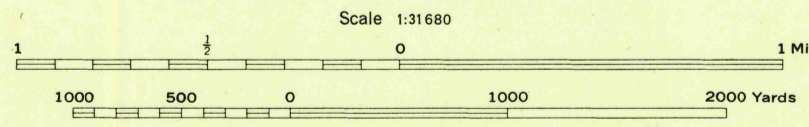
COBLESKILL QUADRANGLE  
7 1/2 - MINUTE SERIES

(ESPERANCE)



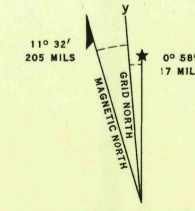
Mapped by Tennessee Valley Authority under direction of the Chief of Engineers, U. S. Army, 1943.  
Control by USCGS, USGS, and TVA.  
Topography by U. S. Geological Survey and Tennessee Valley Authority by Stereophotogrammetric methods (Multiplex).  
Field completion surveys by TVA.  
Wide-angle photography for TVA, 1942 and 1943.  
Polyconic projection, 1927 North American datum.

**ROAD CLASSIFICATION**  
1943  
Dependable hard-surface, heavy-duty road. ——— U. S. Route 20  
Secondary, hard-surface, all-weather road. ——— State Route 7  
Loose-surface graded, dry weather road. ———  
Dirt road. ———  
More than two lanes indicated by note along road with tick at point of change. ———



CONTOUR INTERVAL 20 FEET  
DATUM IS MEAN SEA LEVEL

ONE THOUSAND YARD GRID COMPUTED FROM "GRID SYSTEM FOR PROGRESSIVE MAPS IN THE U. S." ZONE A. U. S. C. & G. S. SPECIAL PUBLICATION NO. 59  
THE LAST THREE DIGITS OF THE GRID NUMBERS ARE OMITTED  
TEN THOUSAND FOOT GRID BASED ON NEW YORK PLANE COORDINATE SYSTEM, EASTERN ZONE  
NOTE: OFFICERS USING THIS MAP WILL MARK HEREIN CORRECTIONS AND ADDITIONS WHICH COME TO THEIR ATTENTION AND MAIL DIRECT TO "THE CHIEF OF ENGINEERS, WASHINGTON, D. C."



USGS  
Historical File  
Topographic Division

COBLESKILL, N. Y.  
N4237.5-W7422.5/7.5  
EDITION OF 1945

U. S. G. S.  
FILE COPY  
Inspection and Control