

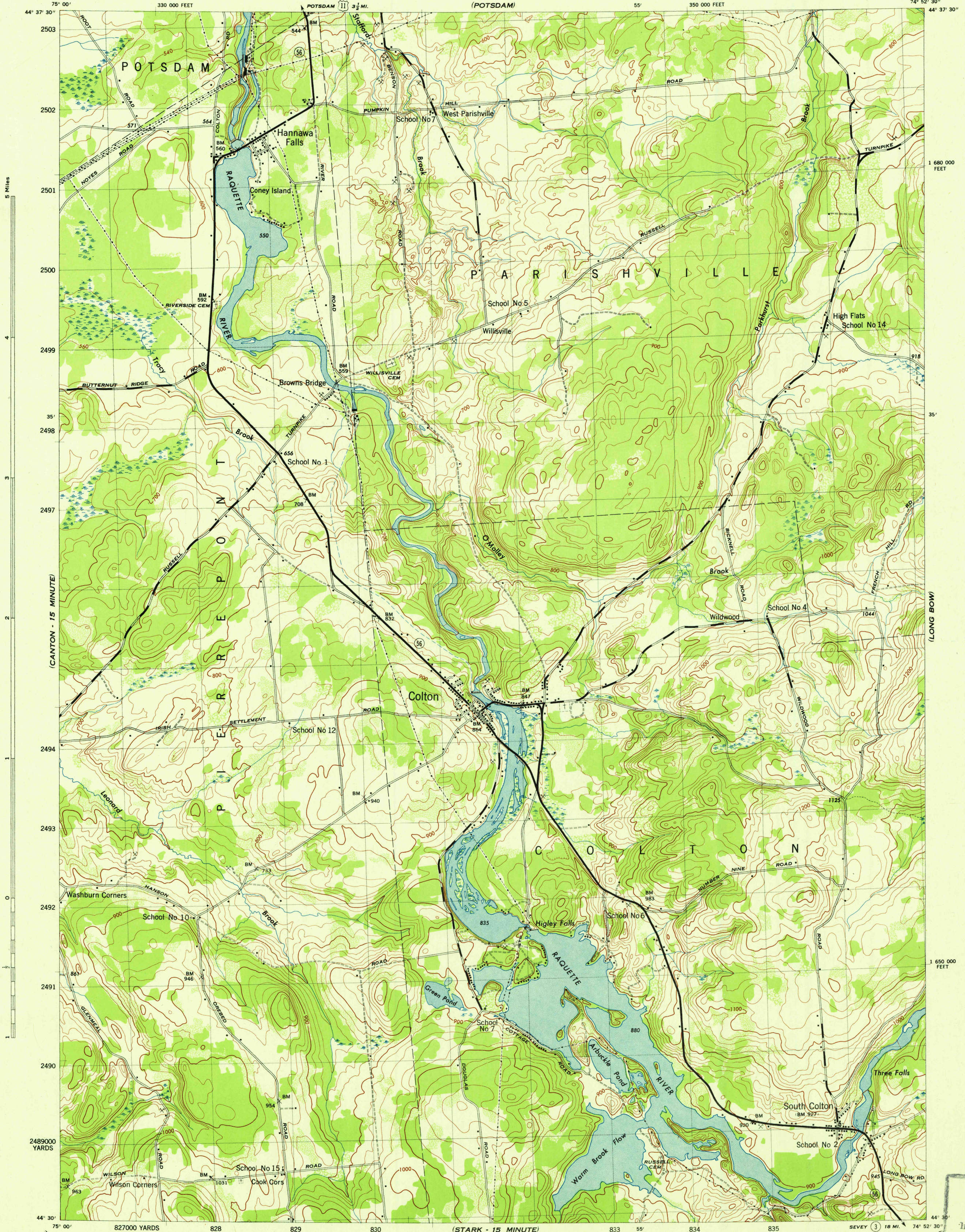
(CANTON - 15 MINUTE)

NEW YORK 1:31,680
(ST LAWRENCE COUNTY)

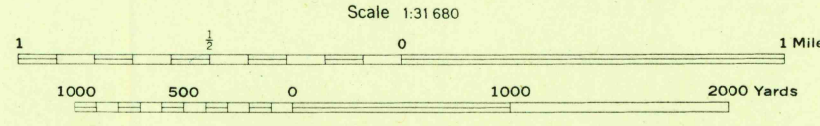
WAR DEPARTMENT
CORPS OF ENGINEERS, U. S. ARMY

COLTON QUADRANGLE
7 1/2 - MINUTE SERIES

(PARISHVILLE)



827000 YARDS 828 829 830 833 834 835 SEVEY (3) 18 MI. 74° 52' 30"



CONTOUR INTERVAL 20 FEET
DATUM IS MEAN SEA LEVEL

ONE THOUSAND YARD GRID COMPUTED FROM "GRID SYSTEM FOR PROGRESSIVE MAPS IN THE U. S. ZONE A, U. S. G. S. SPECIAL PUBLICATION NO. 59" THE LAST THREE DIGITS OF THE GRID NUMBERS ARE OMITTED. TEN THOUSAND FOOT GRID BASED ON NEW YORK PLANE COORDINATE SYSTEM, EASTERN ZONE. NOTE: OFFICERS USING THIS MAP WILL MAKE NECESSARY CORRECTIONS AND ADJUSTMENTS WHICH COME TO THEIR ATTENTION AND MAIL DIRECT TO THE CHIEF OF ENGINEERS, WASHINGTON, D. C.

REPRODUCED BY THE TENNESSEE VALLEY AUTHORITY
AMS NO. 120098

- WOODLAND CLASSIFICATION
- Dense woodland
 - Dense brush
 - Scattered brush and trees
 - Orchard
 - Vineyard

USGS
Historical File
Topographic Division



COLTON, N. Y.
N4430-W7452.5/7.5
EDITION OF 1943

U. S. G. S.
FILE CO
INSPECTION REG.

(STARK - 15 MINUTE)

(RUSSELL - 15 MINUTE)

Maped by Tennessee Valley Authority under direction of the Chief of Engineers, U. S. Army, 1943.
Control by USCGS, USGS, and TVA.
Topography by U. S. Geological Survey and Tennessee Valley Authority by Stereophotogrammetric methods (Multiplex).
Field completion surveys by TVA.
Wide-angle photography for TVA, 1942.
Polyconic projection, 1927 North American datum.

ROAD CLASSIFICATION
1943

Dependable hard-surface, heavy-duty road. U. S. Route 20
Loose-surface graded, dry weather road.
Secondary, hard-surface, all-weather road. State Route 7
Dirt road.
More than two lanes indicated by note along road with tick at point of change. 3 LANE 4 LANE

THIS MAP COMPLIES WITH THE NATIONAL STANDARD MAP ACCURACY REQUIREMENTS.