

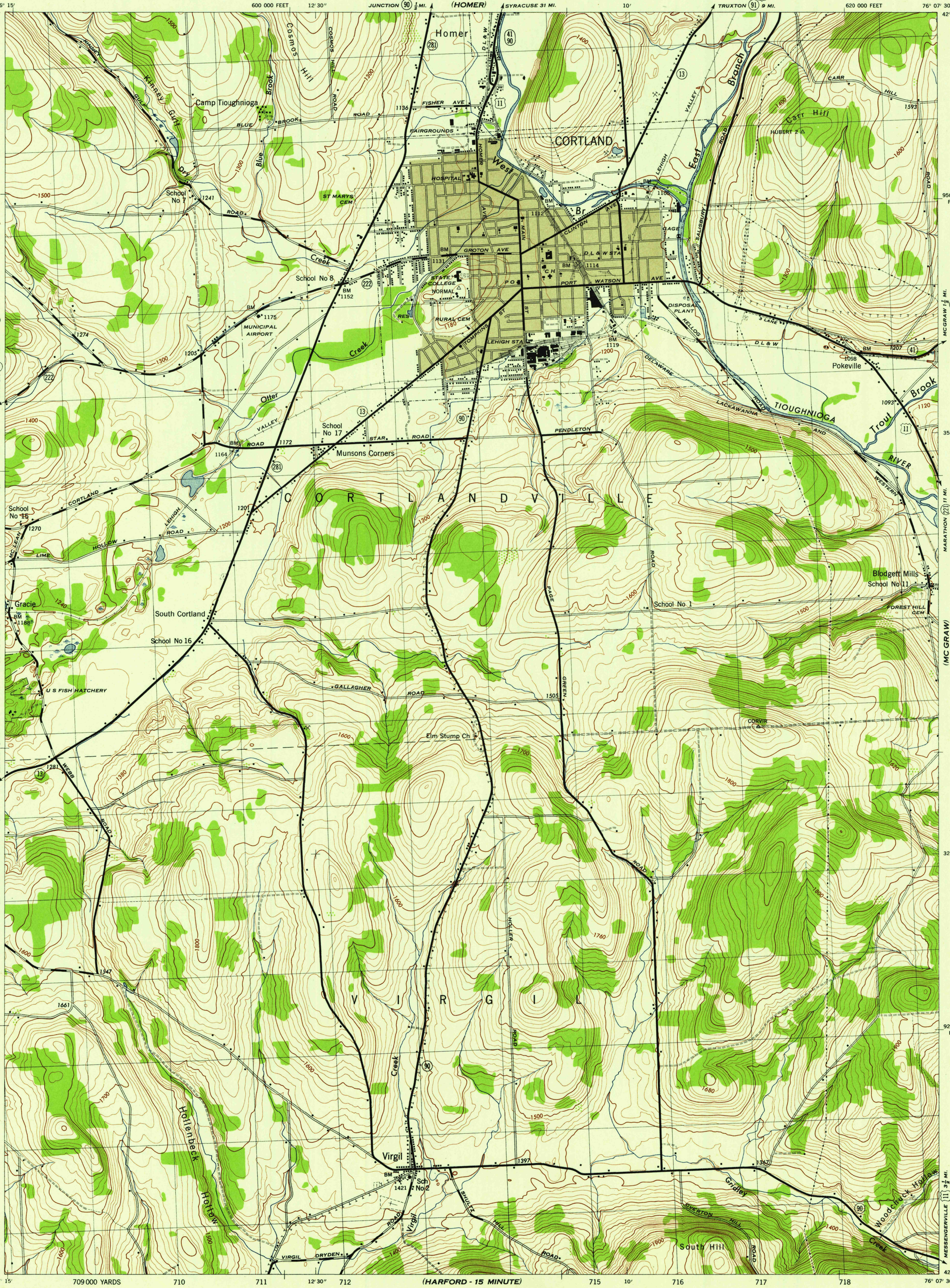
NEW YORK 1:31,680  
(CORTLAND COUNTY)

WAR DEPARTMENT  
CORPS OF ENGINEERS, U. S. ARMY

CORTLAND QUADRANGLE  
7 1/2-MINUTE SERIES

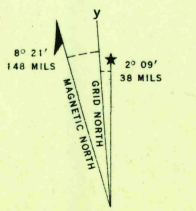
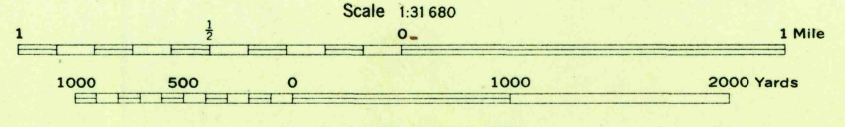
SEMPRONUS  
42° 37' 30"  
263  
262  
261  
260  
35  
258  
257  
255  
254  
253  
252  
251  
250  
42° 30'

(TRUXTON)  
620 000 FEET  
620 000 FEET  
950 000 FEET  
35  
32° 30'  
920 000 FEET  
920 000 FEET  
42° 30'



Maped by Tennessee Valley Authority under direction of the Chief of Engineers, U. S. Army, 1943.  
Control by USCGS, USGS, and TVA.  
Topography by U. S. Geological Survey and Tennessee Valley Authority by Stereophotogrammetric methods (Multiplex).  
Field completion surveys by TVA.  
Wide-angle photography for TVA, 1942.  
Polyconic projection. 1927 North American datum.

ROAD CLASSIFICATION  
1943  
Dependable hard surface, heavy-duty road. Loose surface graded, dry weather road. U. S. Route 20  
Secondary, hard-surface, all-weather road. Dirt road. State Route 7  
More than two lanes indicated by note along road with tick at point of change. 3 LANE 4 LANE  
Gray tint indicates areas in which only landmark buildings are shown.  
THIS MAP COMPLIES WITH THE NATIONAL STANDARD MAP ACCURACY REQUIREMENTS.



USCGS  
Historical File  
Topographic Division

CORTLAND, N. Y.  
N4230-W7607.5/7.5  
EDITION OF 1944

U.S.G.S.  
FILE COPY  
Inspection and Printing

DRYDEN - 15 MINUTE

(HARFORD - 15 MINUTE)