

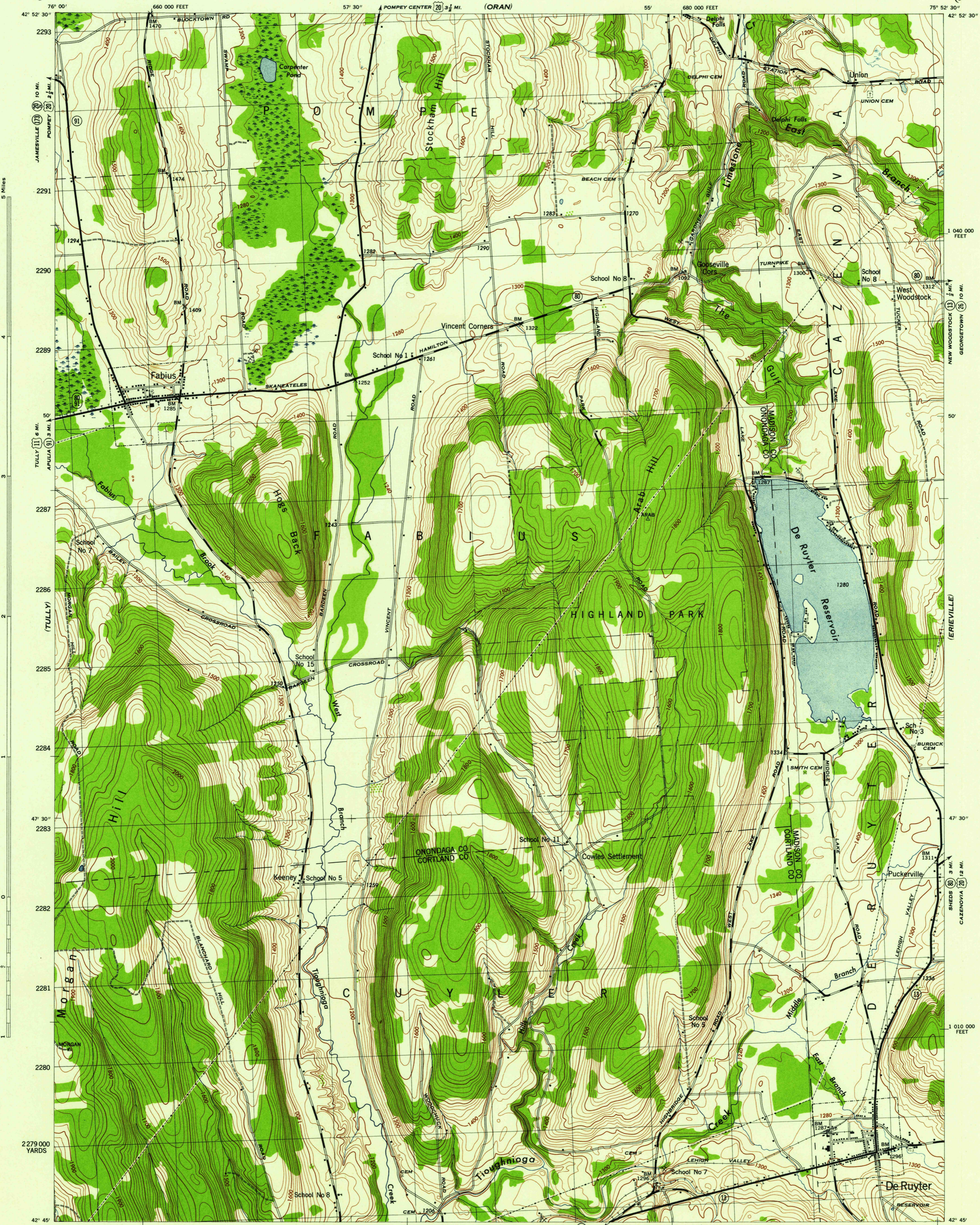
(JAMESVILLE)

NEW YORK
SCALE 1:31,680

WAR DEPARTMENT
CORPS OF ENGINEERS, U. S. ARMY

DE RUYTER QUADRANGLE
7 1/2 - MINUTE SERIES

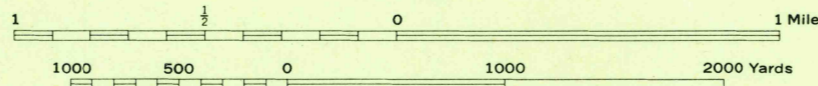
(CAZENOVA)



Mapped by Tennessee Valley Authority under direction of the Chief of Engineers, U. S. Army, 1943.
 Control by USCGS, USGS, and TVA.
 Topography by U. S. Geological Survey and Tennessee Valley Authority by Stereophotogrammetric methods (Multiplex).
 Field completion surveys by TVA.
 Wide-angle photography for TVA, 1942.
 Polyconic projection. 1927 North American datum.

ROAD CLASSIFICATION
1943

Dependable hard-surface, heavy-duty road.	Loose-surface graded, dry weather road.	U. S. Route
Secondary, hard-surface, all-weather road.	Dirt road.	State Route
More than two lanes indicated by note along road with tick at point of change.		3 LANE 4 LANE

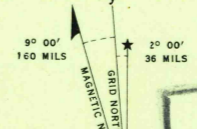


CONTOUR INTERVAL 20 FEET
 DATUM IS MEAN SEA LEVEL

ONE THOUSAND YARD GRID COMPUTED FROM "GRID SYSTEM FOR PROGRESSIVE MAPS IN THE U. S." ZONE A, U. S. G. S. SPECIAL PUBLICATION NO. 59. THE LAST THREE DIGITS OF THE GRID NUMBERS ARE OMITTED.

TEN THOUSAND FOOT GRID BASED ON NEW YORK PLANE COORDINATE SYSTEM, CENTRAL ZONE.

NOTE: OFFICERS USING THIS MAP WILL MAKE NECESSARY CORRECTIONS AND ADJUSTMENTS WHICH ARE TO THEIR ATTENTION AND MAIL DIRECT TO THE CHIEF OF ENGINEERS, WASHINGTON, D. C.



U.S.G.S.
FILE COPY
 Inspection and Control

USGS
 Historical File
 Topographic Division

DE RUYTER, N. Y.
 N4245-W7552.5/7.5
 EDITION OF 1944

THIS MAP COMPLIES WITH THE NATIONAL STANDARD MAP ACCURACY REQUIREMENTS.

(TRUXTON)

(SOUTH OTSELIC)