

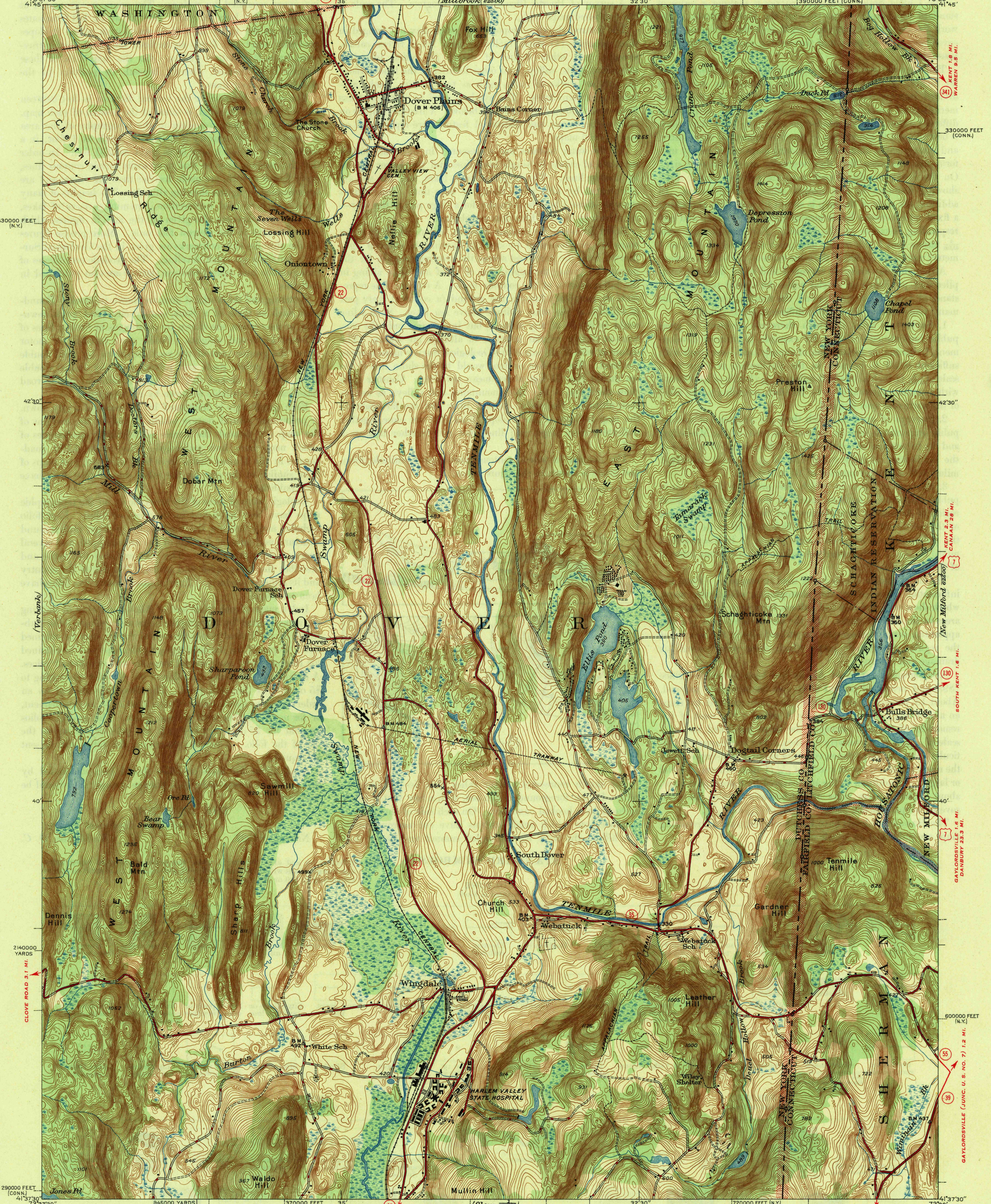
HISTORICAL FILE COPY
Do not mutilate return to J.H. Wyatt Wash. DC.

U. S. G. S.
FILE COPY
Imperial and Metric

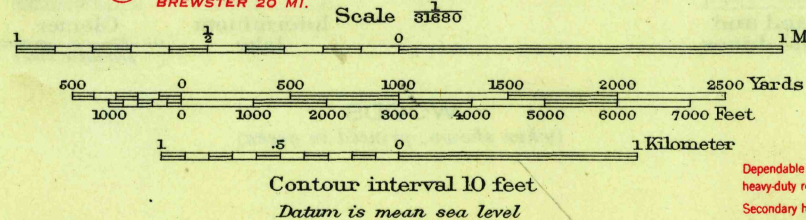
UNITED STATES
DEPARTMENT OF THE INTERIOR
GEOLOGICAL SURVEY

WAR DEPARTMENT
CORPS OF ENGINEERS, U. S. ARMY
(Millbrook: 22500)

SOUTH AMENIA 4.1 MI. (34)
NEW YORK-CONNECTICUT
DOVER PLAINS QUADRANGLE
7 1/2-MINUTE SERIES
390000 FEET (CONN.)



Mapped by the Geological Survey
1944



USGS
Historical File
Topographic Division

Polyconic projection, 1927 North American datum
5000 yard grid based on U.S. zone system, A
10000 foot grids based on New York (East)
and Connecticut rectangular coordinate systems
DOVER PLAINS, N.Y.-CONN.
Edition of 1947
N41375-W7330/75

ROAD CLASSIFICATION 1944

Dependable hard-surface	Dry weather roads	U. S. Route (15)
heavy-duty road	Loose-surface graded	State Route (16)
Secondary hard-surface	Unsurfaced graded	
all-weather road	Dirt road	

More than two lanes indicated along road with tick at point of change: 2 LANE, 4 LANE

U. S. G. S.
FILE COPY
Imperial and Metric

4325