

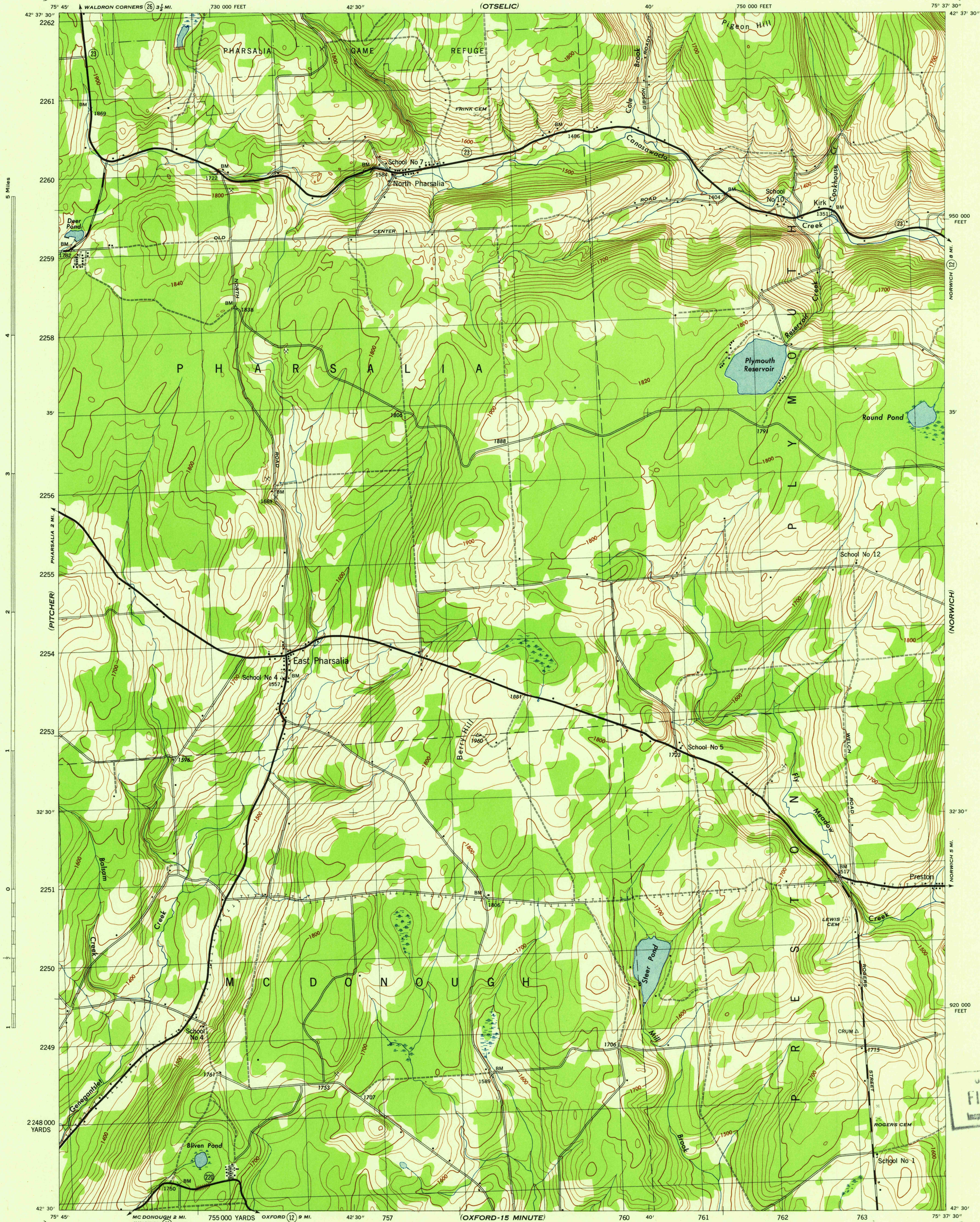
(SOUTH OTSELIC)

NEW YORK 1:31,680
(CHENANGO COUNTY)

WAR DEPARTMENT
CORPS OF ENGINEERS, U. S. ARMY

EAST PHARSALIA QUADRANGLE
7½-MINUTE SERIES

(EASTVILLE)



Map by Tennessee Valley Authority under direction of the
Chief of Engineers, U. S. Army, 1943.
Control by USCGS, USED, and TVA.
Topography by U. S. Geological Survey and Tennessee Valley Authority
by Stereophotogrammetric methods (Multiplex).
Field completion surveys by TVA.
Wide-angle photography for TVA, 1942.
Polyconic projection, 1927 North American Datum.

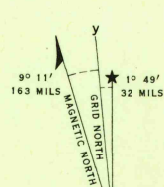
ROAD CLASSIFICATION
1943
Dependable hard-surface,
heavy-duty road. ——— U. S. Route (20)
Loose-surface graded,
dry-weather road. ——— State Route (7)
Secondary, hard-surface,
all-weather road. ———
Dirt road. ———
More than two lanes indicated by tick along road with tick at point of change.

THIS MAP COMPLIES WITH THE NATIONAL STANDARD MAP ACCURACY REQUIREMENTS.

Scale 1:31,680
1 000 500 0 1000 2000 Yards
1 Mile

CONTOUR INTERVAL 20 FEET
DATUM IS MEAN SEA LEVEL

ONE THOUSAND YARD GRID COMPUTED FROM "GRID SYSTEM FOR PROGRESSIVE MAPS
IN THE U. S. ZONE A, U. S. C. & G. S. SPECIAL PUBLICATION NO. 89
THE LAST THREE DIGITS OF THE GRID NUMBERS ARE OMITTED
TEN THOUSAND FOOT GRID BASED ON NEW YORK PLANE COORDINATE SYSTEM, CENTRAL ZONE
NOTE: OFFICERS USING THIS MAP WILL MARK NECESSARY CORRECTIONS AND ADDITIONS WHICH COME
TO THEIR ATTENTION AND MAIL DIRECT TO "THE CHIEF OF ENGINEERS, WASHINGTON, D. C."



APPROXIMATE MEAN
DECLINATION 1944
ANNUAL MAGNETIC CHANGE 0'

USGS
Historical File
Topographic Division

EAST PHARSALIA, N. Y.
N4230-W7537.5/7.5
EDITION OF 1944

FILE COPY
Inspection and Editing.