

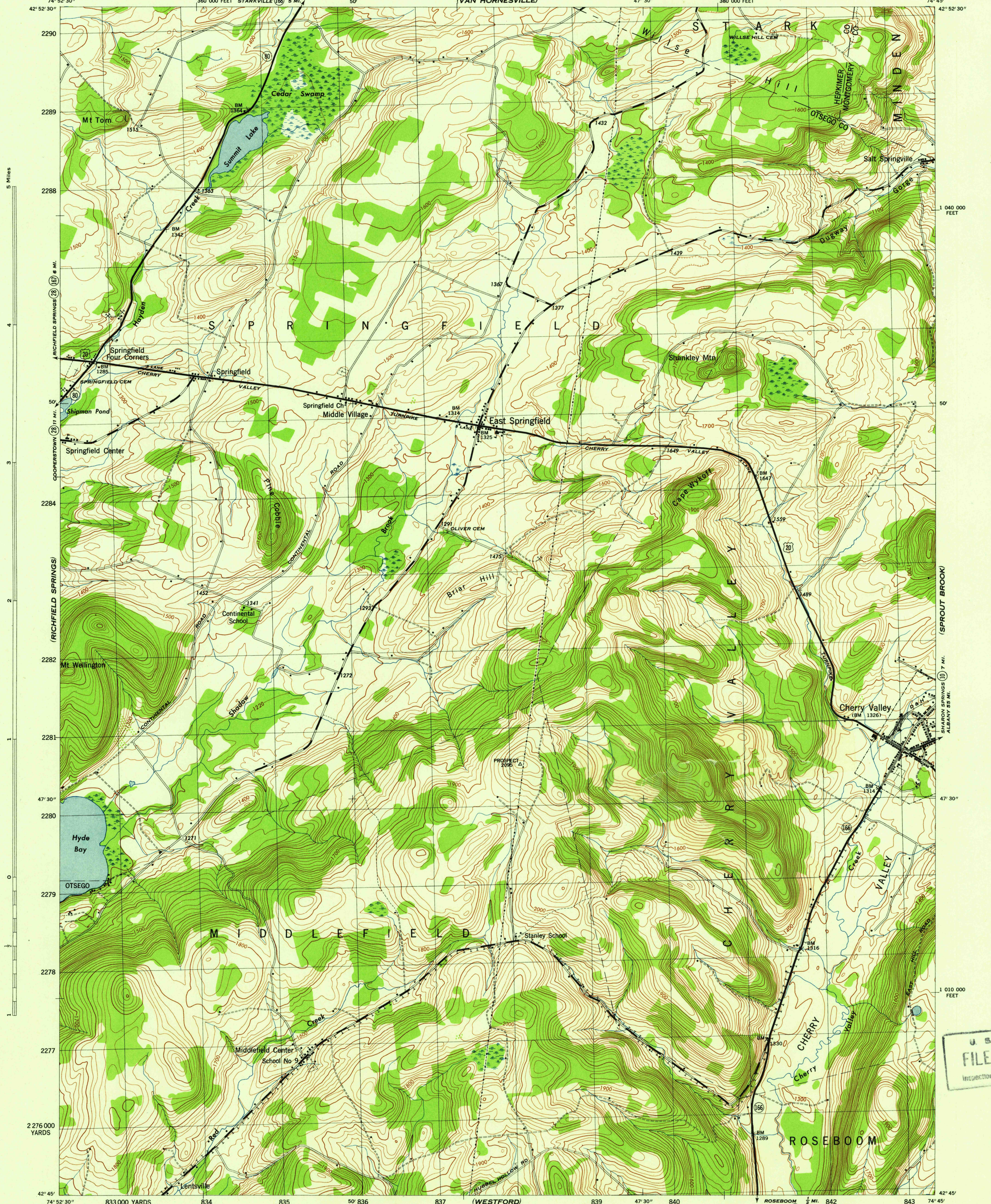
NEW YORK
SCALE 1:31,680

WAR DEPARTMENT
CORPS OF ENGINEERS, U. S. ARMY

EAST SPRINGFIELD QUADRANGLE
7 1/2-MINUTE SERIES

(JORDANVILLE)

(FT. PLAIN)



5 Miles
4
3
2
1
0
1
2
3
4
5

1 040 000 FEET
50'
1 010 000 FEET
47' 30"
1 010 000 FEET
42' 52' 30"

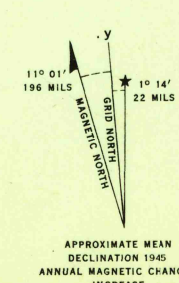
Mapped by Tennessee Valley Authority under direction of the Chief of Engineers, U. S. Army, 1943.
Control by USCGS and TVA.
Topography by U. S. Geological Survey and Tennessee Valley Authority by Stereophotogrammetric methods (Multiplex).
Field completion surveys by TVA.
Wide-angle photography for TVA, 1942.
Polyconic projection. 1927 North American datum.

ROAD CLASSIFICATION
1943
Dependable hard-surface, heavy-duty road. Loose-surface graded, dry weather road. U. S. Route
Secondary, hard-surface, all-weather road. Dirt road. State Route
More than two lanes indicated by note along road with tick at point of change. 3 LANE 1 & 2 LANE



CONTOUR INTERVAL 20 FEET
DATUM IS MEAN SEA LEVEL

ONE THOUSAND YARD GRID COMPUTED FROM "GRID SYSTEM FOR PROGRESSIVE MAPS IN THE U. S." ZONE A. U. S. C. & G. S. SPECIAL PUBLICATION NO. 59
THE LAST THREE DIGITS OF THE GRID NUMBERS ARE OMITTED
TEN THOUSAND FOOT GRID BASED ON NEW YORK PLANE COORDINATE SYSTEM, EASTERN ZONE
NOTE: OFFICERS USING THIS MAP WILL MAKE NECESSARY CORRECTIONS AND ADJUSTMENTS WHICH COME TO THEIR ATTENTION AND MAIL DIRECT TO "THE CHIEF OF ENGINEERS, WASHINGTON, D. C."



USCS
Historical File
Topographic Division

EAST SPRINGFIELD, N. Y.
N4245-W7445/7.5
EDITION OF 1945

USCS
FILE COPY
Inspection and Editing

(COOPERSTOWN)

(SOUTH VALLEY)