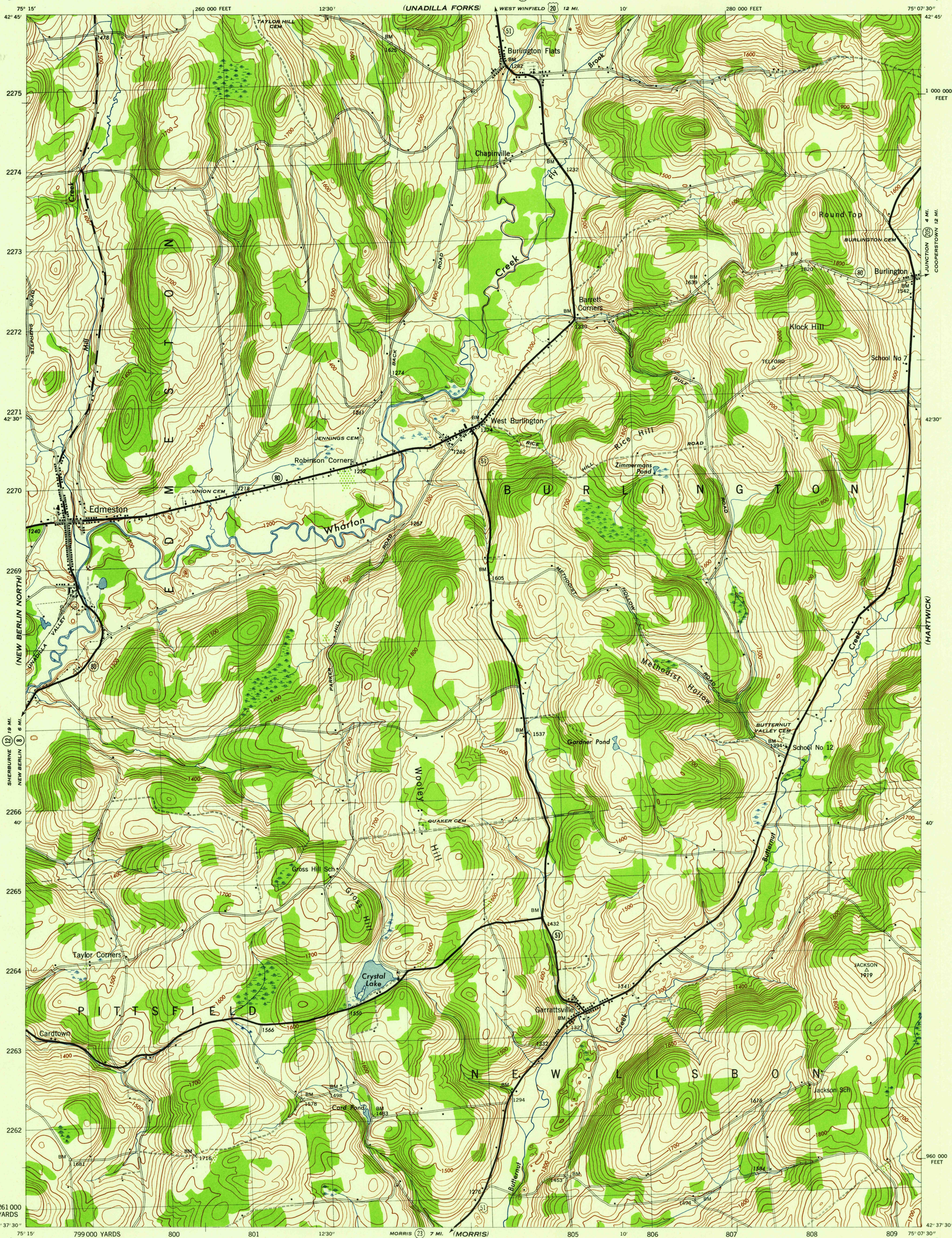


NEW YORK 1:31,680  
(OTSEGO COUNTY)

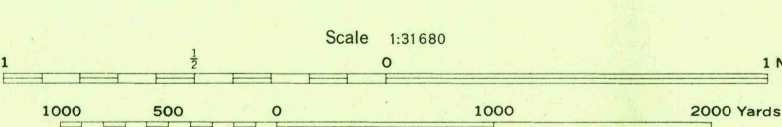
WAR DEPARTMENT  
CORPS OF ENGINEERS, U. S. ARMY

EDMESTON QUADRANGLE  
7 1/2 - MINUTE SERIES



Mapped by Tennessee Valley Authority under direction of the Chief of Engineers, U. S. Army, 1943.  
Control by USGS, USGS and TVA  
Topography by U. S. Geological Survey and Tennessee Valley Authority by Stereophotogrammetric methods (Multiplex).  
Field completion surveys by TVA  
Wide-angle photography for TVA, 1942.  
Polyconic projection. 1927 North American datum.

**ROAD CLASSIFICATION**  
1943  
Dependable hard-surface, heavy-duty road. loose-surface graded, dry-weather road. U. S. Route   
Secondary, hard-surface, all-weather road. Dirt road. State Route   
More than two lanes indicated by note along road with tick at point of change.



CONTOUR INTERVAL 20 FEET  
DATUM IS MEAN SEA LEVEL

ONE THOUSAND YARD GRID COMPUTED FROM "GRID SYSTEM FOR PROGRESSIVE MAPS IN THE U. S. ZONE A, U. S. G. & S. SPECIAL PUBLICATION NO. 98". THE LAST THREE DIGITS OF THE GRID NUMBERS ARE OMITTED.  
TEN THOUSAND FOOT GRID BASED ON NEW YORK PLANE COORDINATE SYSTEM, EASTERN ZONE.  
NOTE: OFFICERS USING THIS MAP WILL WANT NEARBY CORRECTIONS AND ADDITIONS WHICH COME TO THEIR ATTENTION AND MAIL DIRECT TO "THE CHIEF OF ENGINEERS, WASHINGTON, D. C."

USGS  
Historical File  
Topographic Division  
FILE COPY  
Inspector and Editor  
APPROXIMATE MEAN DECLINATION 1945 ANNUAL MAGNETIC CHANGE 1/4 INCREASE

EDMESTON, N. Y.  
N4237.5-W7507.5/7.5  
EDITION OF 1945

THIS MAP COMPLIES WITH THE NATIONAL STANDARD MAP ACCURACY REQUIREMENTS.