

(NEVERSKI)
1:62,500

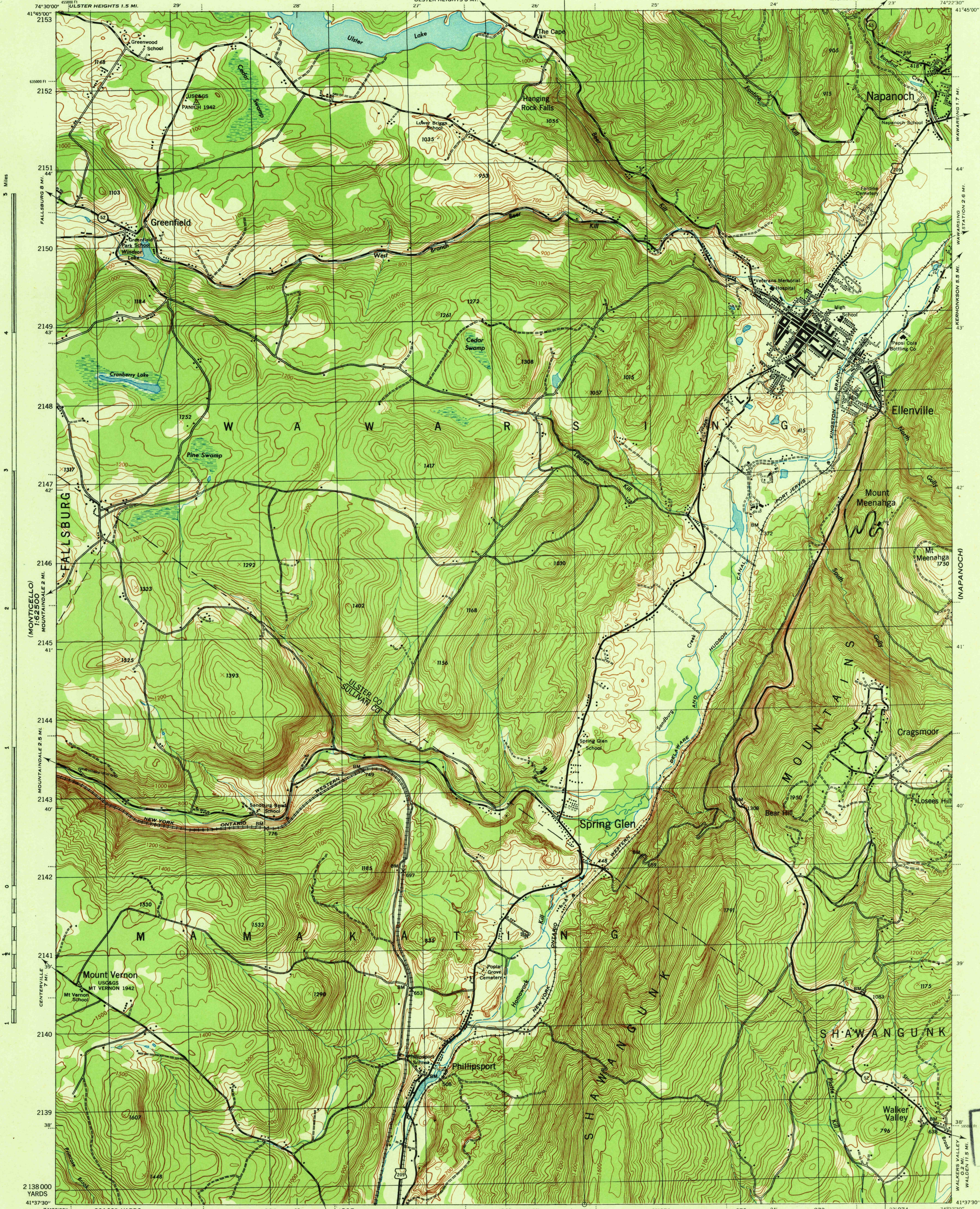
NEW YORK 1:31,680

WAR DEPARTMENT
CORPS OF ENGINEERS, U. S. ARMY

FIRST EDITION-AMS 1

ELLENVILLE QUADRANGLE
7.5 MINUTE SERIES

(KERHONKSON)



(MONTICELLO)
1:62,500

864 000 YARDS

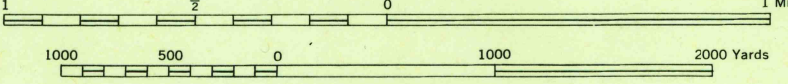
(WURTSBORO)

(PINEBUSH)

First Edition 1943
Prepared under the direction of the Chief of Engineers,
U. S. Army, 1942.
Compiled by Fairchild Aerial Surveys, Inc.,
Los Angeles, California.
Topography by Fairchild Aerial Surveys, Inc.,
by Stereophotogrammetric Process.
Control by U. S. Coast and Geodetic Survey.
Aerial Photography by Fairchild Aerial Surveys, Inc., 1942.
Polyconic Projection, North American Datum 1927.

ROAD CLASSIFICATION 1943

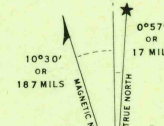
Dependable hard surface, heavy-duty road	Loose surface, gravel, dry weather road	U. S. Route
Secondary, hard surface, all-weather road	Dirt road	State Route
More than two lanes indicated by note along road with tick at point of change	3 LANE 4 LANE	



CONTOUR INTERVAL 20 FEET
DATUM IS MEAN SEA LEVEL

THOUSAND YARD GRID COMPUTED FROM "GRID SYSTEM FOR PROGRESSIVE MAPS
IN THE U. S. "ZONE "A". U. S. C. & G. S. SPECIAL PUBLICATION NO. 89
THE LAST THREE DIGITS OF THE GRID NUMBERS ARE OMITTED
"NEW YORK STATE GRID ZONE EAST" IS INDICATED BY DOTTED TICKS
OUTSIDE THE NEAT LINE AT 800 FT. INTERVALS.

NOTE: OFFICERS USING THIS MAP WILL MARK HEREON CORRECTIONS AND AMENDMENTS WHICH COME
TO THEIR ATTENTION AND MAIL DIRECT TO: THE CHIEF OF ENGINEERS, WASHINGTON, D. C.



Use diagram only to obtain numerical values
to determine magnetic north line, connect the
pivot point "P" on the south edge of the map
with the value of the angle between grid
and magnetic north, as plotted on the degree
scale of the north edge of the map.

ELLENVILLE, N. Y.
N4137.5-W7422.5/7.5

U.S.G.S.
FILE COPY
Inventor: Wm. C. King

USGS
Historical File
Topographic Division

U.S.G.S.
FILE COPY