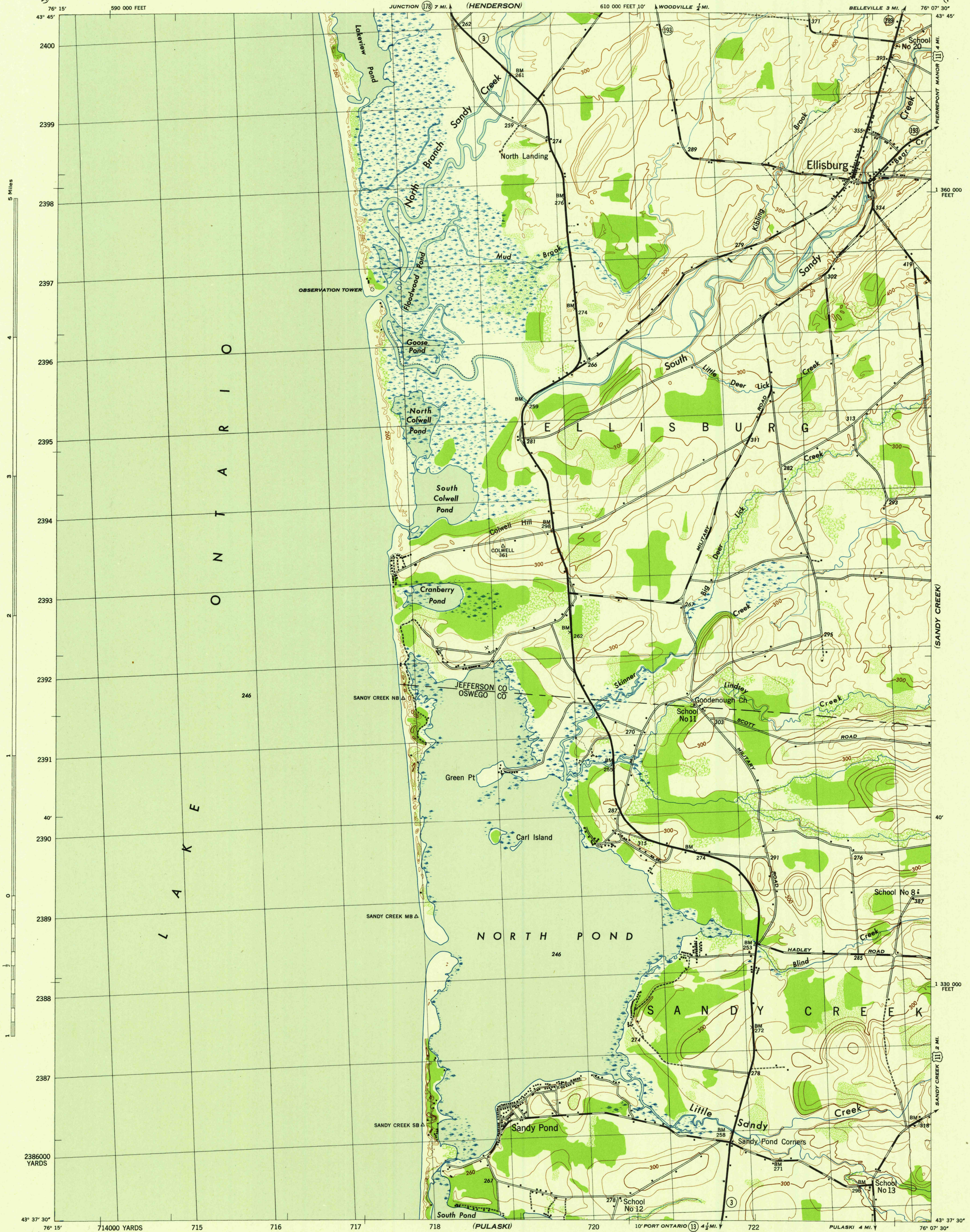


NEW YORK 1:31,680

WAR DEPARTMENT
CORPS OF ENGINEERS, U. S. ARMY

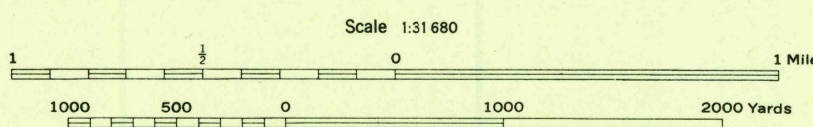
ELLISBURG QUADRANGLE
7 1/2 - MINUTE SERIES



Map by Tennessee Valley Authority under direction of the
Chief of Engineers, U. S. Army, 1942.
Control by USCGS, USGS, U. S. Lake Survey, and TVA.
Topography by Tennessee Valley Authority plane-table surveys.
Culture and drainage in part compiled from aerial photographs.
Wide-angle photography for TVA, 1942.
Polyconic projection, 1927 North American datum.

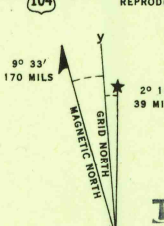
ROAD CLASSIFICATION
Dependable hard-surface,
all-weather road. U. S. Route
Loose-surface graded,
dry-weather road. State Route
Secondary, hard-surface,
all-weather road. **3 LANE 1 1/2 LANE**
Dirt road.
More than two lanes indicated by note along road with tick at point of change.

THIS MAP COMPLIES WITH THE NATIONAL STANDARD MAP ACCURACY REQUIREMENTS.



CONTOUR INTERVAL 20 FEET
DATUM IS MEAN SEA LEVEL

ONE THOUSAND YARD GRID COMPUTED FROM "GRID SYSTEM FOR PROGRESSIVE MAPS
IN THE U. S. ZONE A, U. S. C. & G. S. SPECIAL PUBLICATION NO. 89"
THE LAST THREE DIGITS OF THE GRID NUMBERS ARE OMITTED
TEN THOUSAND FOOT GRID BASED ON NEW YORK PLANE COORDINATE SYSTEM, CENTRAL ZONE
NOTE: OFFICERS USING THIS MAP WILL MAKE NECESSARY CORRECTIONS AND ADJUSTMENTS
TO THEIR ATTENTION AND MAIL DIRECT TO "THE CHIEF OF ENGINEERS, WASHINGTON, D. C."



USGS
Historical File
Topographic Division

WOODLAND CLASSIFICATION
Dense woodland
Dense brush
Scattered brush and trees
Orchard
Vineyard

ELLISBURG, N. Y.
N4337.5-W7607.5/7.5
EDITION OF 1942