

(UNION SPRINGS)

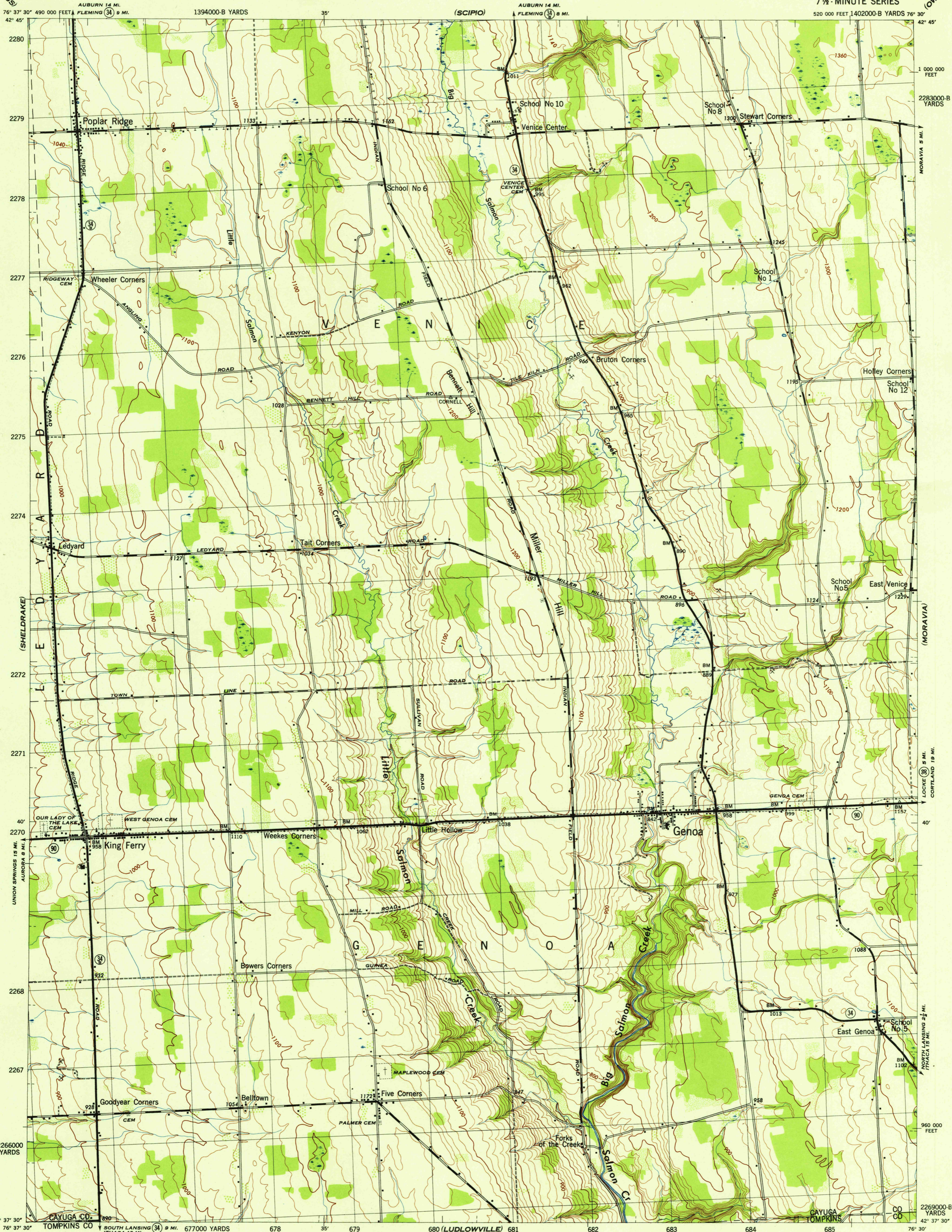
NEW YORK 1:31,680

WAR DEPARTMENT
CORPS OF ENGINEERS, U. S. ARMY

GENOA QUADRANGLE

7 1/2 - MINUTE SERIES

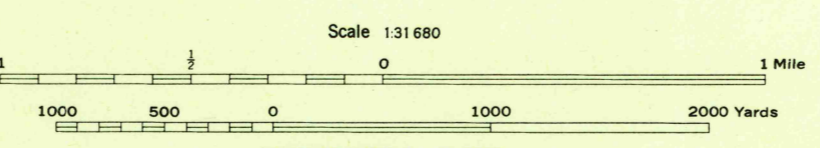
(OWASCO)



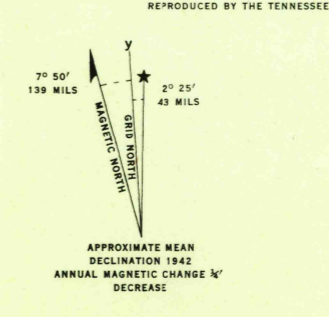
Maped by Tennessee Valley Authority under direction of the Chief of Engineers, U. S. Army, 1942.
 Topography by U. S. Geological Survey and Tennessee Valley Authority by Stereophotogrammetric methods (Multiplex).
 Control by USCGS, and TVA.
 Field completion surveys by TVA.
 Wide-angle photography by TVA, 1942.
 Polyconic projection. 1927 North American datum.

Dependable hard-surface, heavy-duty road. ——— U. S. Route 11
 Secondary, hard-surface, all-weather road. ——— State Route 34
 Loose-surface graded, dry weather road. ———
 Dirt road. ———
 More than two lanes indicated by note along road with tick at point of change. ——— LANE & LANE

THIS MAP COMPLIES WITH THE NATIONAL STANDARD MAP ACCURACY REQUIREMENTS.



Scale 1:31,680
 CONTOUR INTERVAL 20 FEET
 DATUM IS MEAN SEA LEVEL
 ONE THOUSAND YARD GRID COMPUTED FROM "GRID SYSTEM FOR PROGRESSIVE MAPS IN THE U. S." ZONE A, U. S. G. & S. SPECIAL PUBLICATION NO. 59
 THE "S" GRID IS INDICATED BY BARRED TICKS
 THE LAST THREE DIGITS OF THE GRID NUMBERS ARE OMITTED
 TEN THOUSAND FOOT GRID BASED ON NEW YORK PLANE COORDINATE SYSTEM, CENTRAL ZONE
 NOTE: OFFICERS USING THIS MAP WILL MAKE NECESSARY CORRECTIONS AND ADJUSTMENTS WHICH COME TO THEIR ATTENTION AND MAIL DIRECT TO THE CHIEF OF ENGINEERS, WASHINGTON, D. C.



WOODLAND CLASSIFICATION

| | |
|---------------------------|----------|
| Dense woodland | [Symbol] |
| Dense brush | [Symbol] |
| Scattered brush and trees | [Symbol] |
| Orchard | [Symbol] |
| Vineyard | [Symbol] |

GENOA, N. Y.
 N4237.5-W7630.7/5
 EDITION OF 1943

(TRUMANSBURG)

(WEST GROTON)