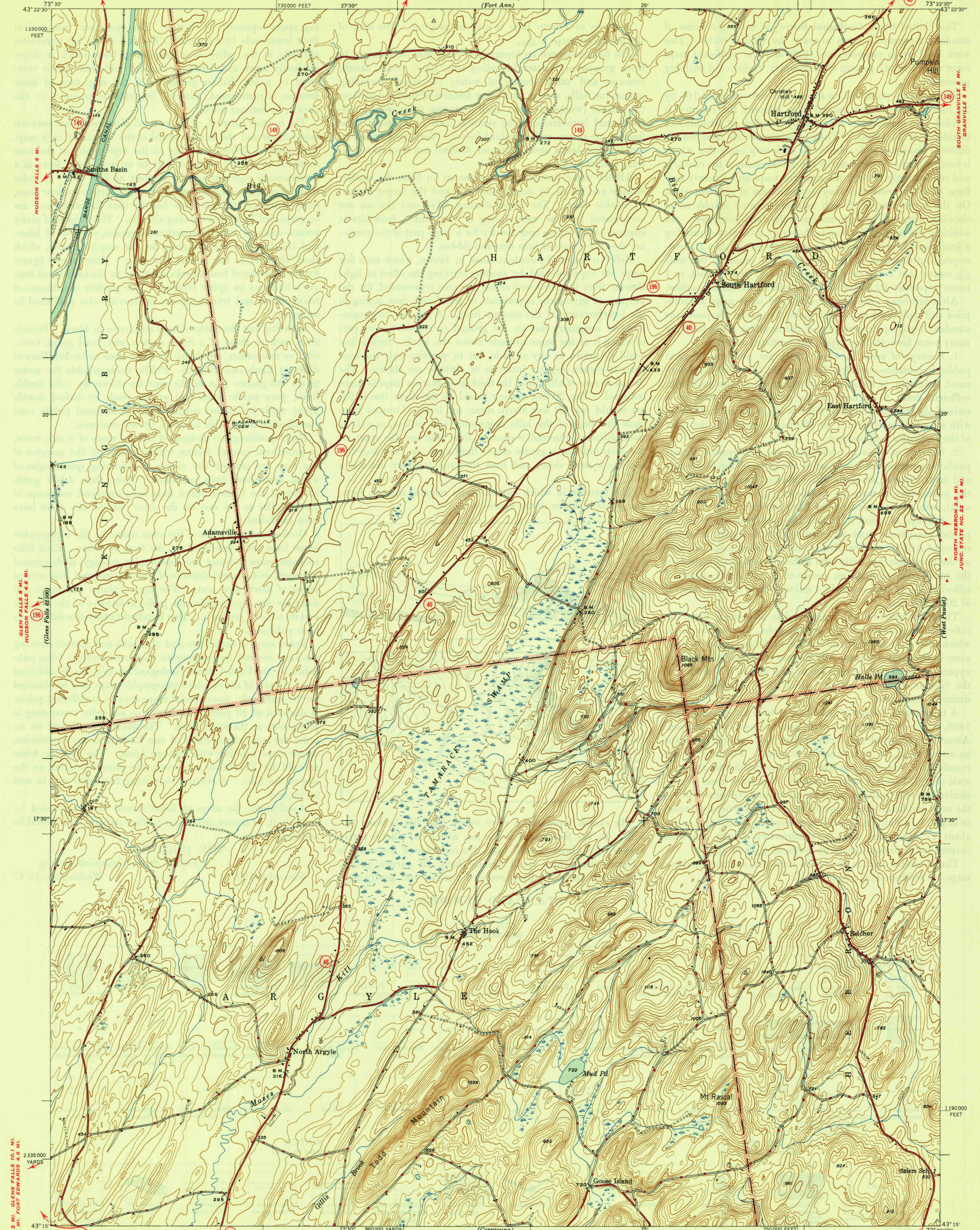


WHITEHALL 14 MI.
JUNC. U. S. NO. 4 0.9 MI.
UNITED STATES
DEPARTMENT OF THE INTERIOR
GEOLOGICAL SURVEY

NORTH GRANVILLE (JUNC. STATE NO. 22) 8 MI. WAR DEPARTMENT
CORPS OF ENGINEERS, U. S. ARMY
(Fort Ann)

NEW YORK MIDDLE GRANVILLE 7 MI.
(WASHINGTON COUNTY)
HARTFORD, QUADRANGLE
7 1/4-MINUTE SERIES

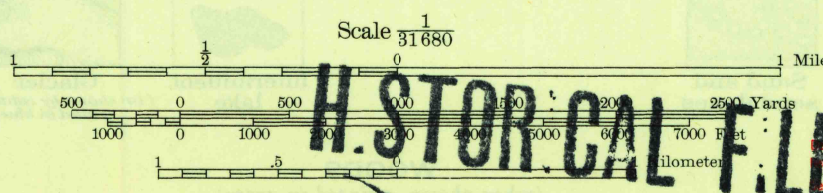


Mapped by the Geological Survey
1944

ARGYLE 1.2 MI.
TROY (CIVIC CENTER) 33 MI.

ARGYLE 0.9 MI.
MIDDLE FALLS 11 MI.

APPROXIMATE MEAN
DECLINATION, 1944



Contour interval 90 feet
Datum is mean sea level

DO NOT REMOVE

ROAD CLASSIFICATION
1946
Dry weather roads
Loose surface graded
Unsurfaced, graded
Dirt road
U. S. Route
State Route
More than two lanes indicated along road with tick at point of change

Polyconic projection. 1927 North American datum
5000 yard grid based on U. S. zone system, A
10000 foot grid based on New York (East)
rectangular coordinate system

HARTFORD, N. Y.
Edition of 1946

N4315-W7322.5/7.5

SURFACE WATER BRANCH
SPECIAL REPORTS SECTION