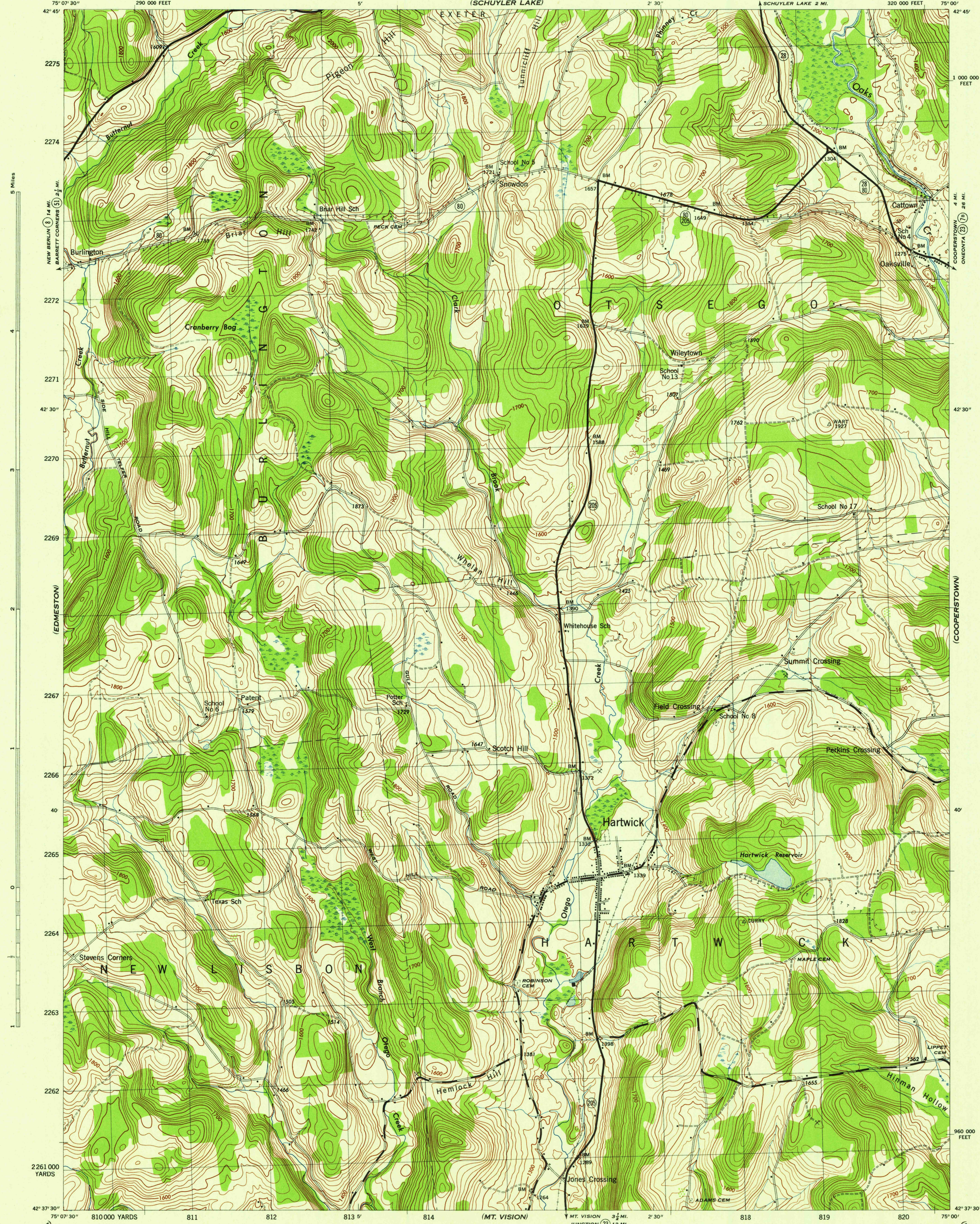


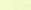
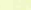
7½-MINUTE SERIES

RICHFIELD SPRINGS 8 MI. 7 1/2-MINUTE SERIES (RI)

▲ SCHUYLER LAKE 2 MI. 320 000 FEET. 75° 00'



Mapped by Tennessee Valley Authority under direction of the
 Chief of Engineers, U. S. Army, 1943.
 Control by US&GS, USGS, and TVA.
 Topography by U. S. Geological Survey and Tennessee Valley Authority
 by Stereophotogrammetric methods (Multiplex).
 Field completion surveys by TVA.
 Wide-angle photography for TVA, 1942.
 Polyconic projection. 1927 North American datum.

ROAD CLASSIFICATION			
1943			
Dependable hard-surface, heavy-duty road.	=====	Loose-surface graded, dry weather road.	===== U. S. Route 
Secondary, hard-surface, all-weather road.	=====	Dirt road.	===== State Route 
More than two lanes indicated by note along road with tick at point of change.			
			3 LANE 4 LANE

THIS MAP COMPLIES WITH THE NATIONAL STANDARD MAP ACCURACY REQUIREMENTS.

CONTOUR INTERVAL 20 FEET
DATUM IS MEAN SEA LEVEL

ONE THOUSAND YARD GRID COMPUTED FROM "GRID SYSTEM FOR PROGRESSIVE MAPS
IN THE U. S." ZONE A, U. S. C. & G. S. SPECIAL PUBLICATION NO. 59
THE LAST THREE DIGITS OF THE GRID NUMBERS ARE OMITTED
TEN THOUSAND FOOT GRID BASED ON NEW YORK PLANE COORDINATE SYSTEM, EASTERN ZONE
NOTE: OFFICERS USING THIS MAP WILL MARK HEREON CORRECTIONS AND ADDITIONS WHICH COME
TO THEIR ATTENTION AND MAIL DIRECT TO "THE CHIEF OF ENGINEERS, WASHINGTON, D. C."

REPRODUCED BY THE TENNESSEE VALLEY AUTHORITY
AMS NO. 121788

U. S. G. S.
FILE COPY
Inspection and Editing

USGS
Historical File
Topographic Division

HARTWICK, N. Y.
N4237.5-W7500/7.5

EDITION OF 1945