

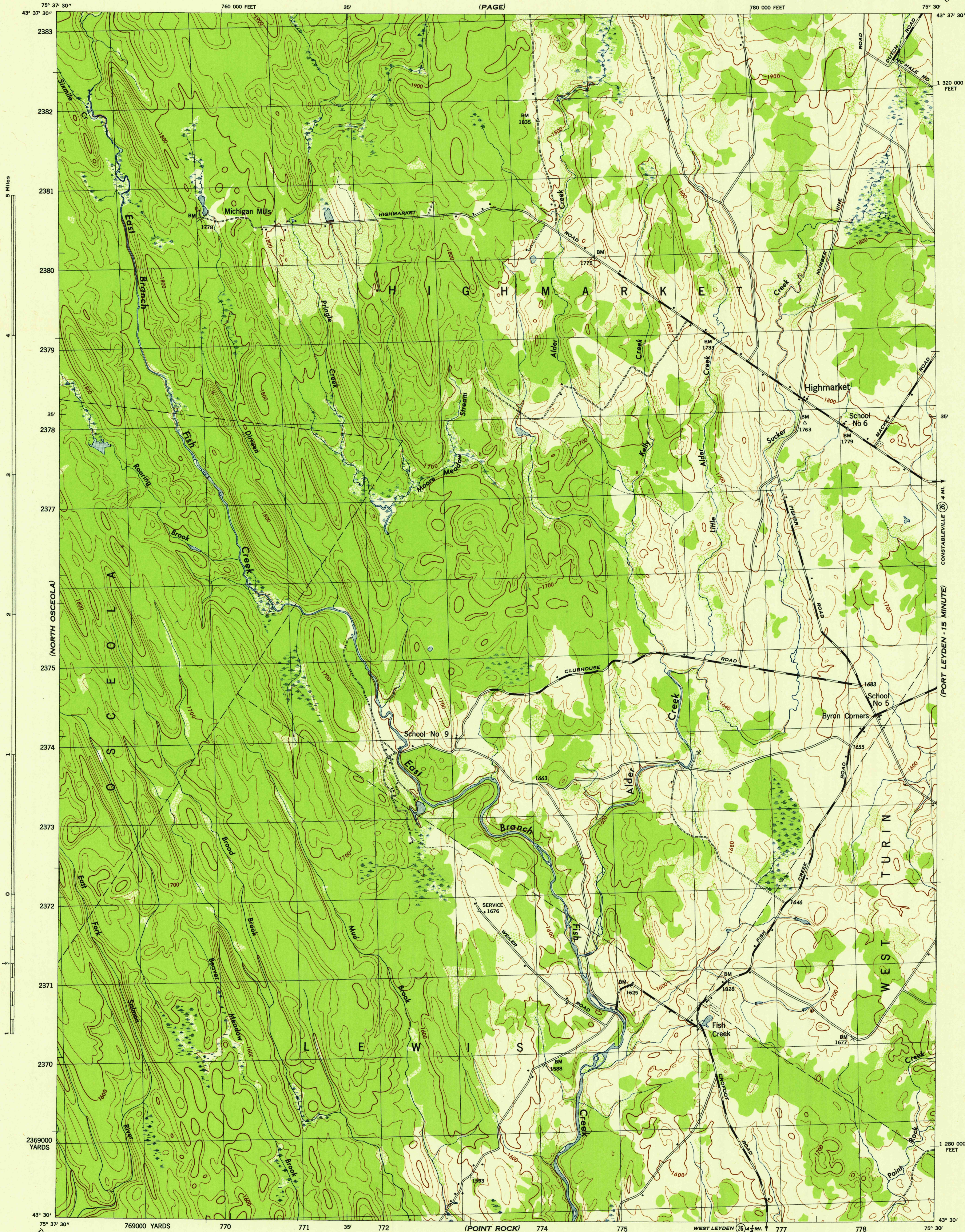
(SEARS POND)

NEW YORK 1:31,680
(LEWIS COUNTY)

WAR DEPARTMENT
CORPS OF ENGINEERS, U. S. ARMY

HIGHMARKET QUADRANGLE
7½-MINUTE SERIES

(PORT LEYDEN - 15 MINUTE)



Map by Tennessee Valley Authority under direction of the
Chief of Engineers, U. S. Army, 1943.
Control by USCGS, USGS, and TVA.
Topography by U. S. Geological Survey and Tennessee Valley Authority
by Stereophotogrammetric methods (Multiplex).
Field completion surveys by TVA.
Wide-angle photography by TVA, 1942.
Polyconic projection. 1927 North American Datum.

ROAD CLASSIFICATION
1943
Dependable hard-surface,
heavy-duty road. U. S. Route 20
Loose-surface graded,
dry weather road. State Route 7
Secondary, hard-surface,
all-weather road. Dirt road. 3 LANE 1 LANE
More than two lanes indicated by note along road with tick at point of change.

Scale 1:31,680
1 000 500 0 1000 2000 Yards
1 Mile

CONTOUR INTERVAL 20 FEET
DATUM IS MEAN SEA LEVEL

ONE THOUSAND YARD GRID COMPUTED FROM "GRID SYSTEM FOR PROGRESSIVE MAPS
IN THE U. S. ZONE A, U. S. C. & G. S. SPECIAL PUBLICATION NO. 89
THE LAST THREE DIGITS OF THE GRID NUMBERS ARE OMITTED
TEN THOUSAND FOOT GRID BASED ON NEW YORK PLANE COORDINATE SYSTEM, CENTRAL ZONE
NOTE: OFFICERS USING THIS MAP WILL MAKE NECESSARY CORRECTIONS AND ADJUSTMENTS WHICH COME
TO THEIR ATTENTION AND MAIL DIRECT TO "THE CHIEF OF ENGINEERS, WASHINGTON, D. C."

APPROXIMATE MEAN
DECLINATION 1944
ANNUAL MAGNETIC CHANGE 0

WOODLAND CLASSIFICATION
Dense woodland
Dense brush
Scattered brush and trees
Orchard
Vineyard

HIGHMARKET, N. Y.
N4330-W7530/7.5
EDITION OF 1944

USGS
Historical File
Topographic Division

(BOONVILLE - 15 MINUTE)