

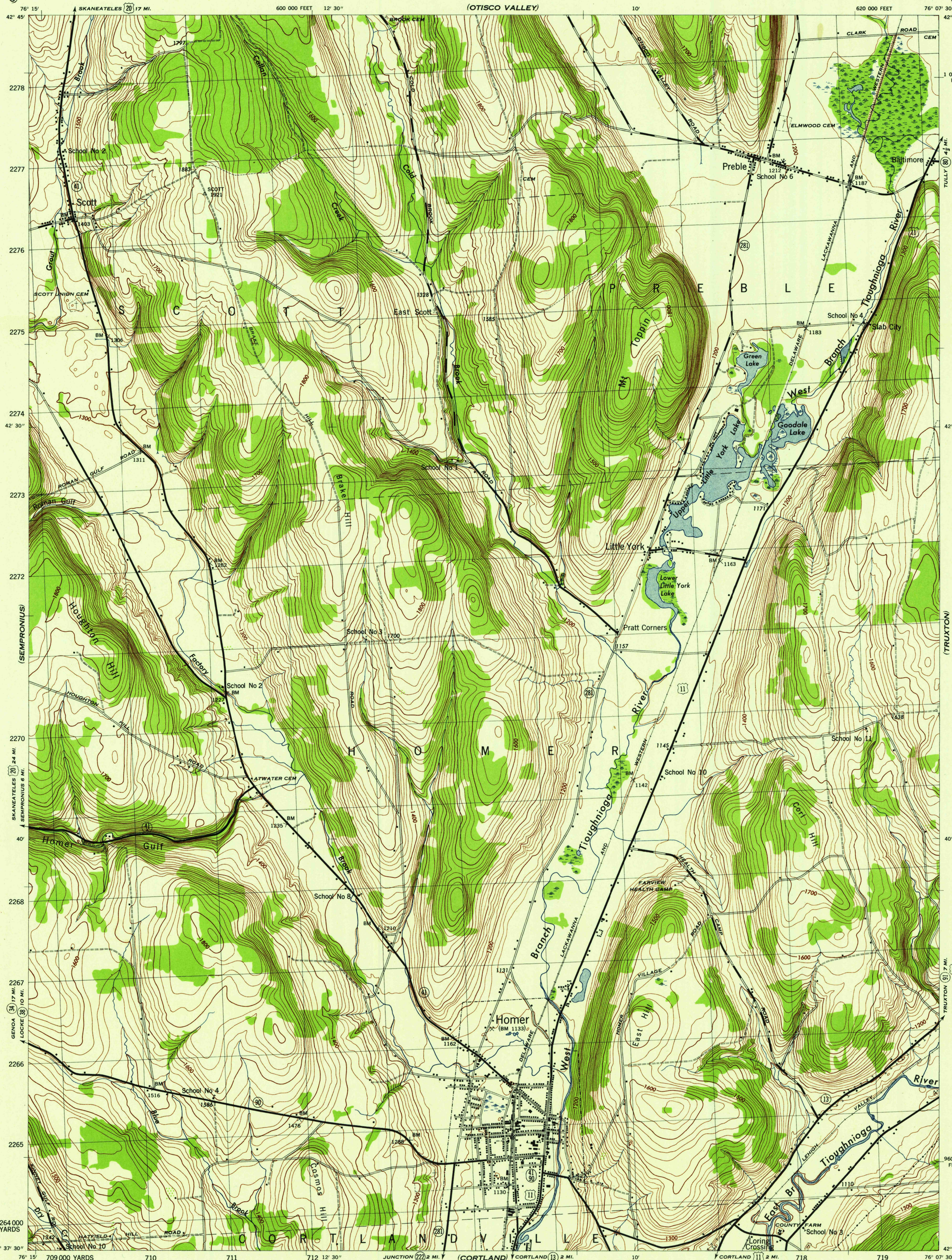
(SPAFORD)
(SEMPRONIUS)
(GROTON)

NEW YORK 1:31,680
(CORTLAND COUNTY)

WAR DEPARTMENT
CORPS OF ENGINEERS, U. S. ARMY

HOMER QUADRANGLE
7 1/2-MINUTE SERIES

(TULLY)
(TRUXTON)
(MC GRAW)



Map by Tennessee Valley Authority under direction of the Chief of Engineers, U. S. Army, 1943.
Control by USCGS and TVA.
Topography by U. S. Geological Survey and Tennessee Valley Authority by Stereophotogrammetric methods (Multiplex).
Field completion surveys by TVA.
Wide-angle photography for TVA, 1942.
Polyconic projection. 1927 North American datum.

ROAD CLASSIFICATION
1943
Dependable hard surface, heavy-duty road. U. S. Route (20)
Loose surface graded, dry weather road. State Route (7)
Secondary, hard surface, all-weather road. Dirt road. 3 LANE 4 LANE
More than two lanes indicated by note along road with tick at point of change.

Scale 1:31,680
1 000 500 0 1000 2000 Yards
1 Mile

CONTOUR INTERVAL 20 FEET
DATUM IS MEAN SEA LEVEL

ONE THOUSAND YARD GRID COMPUTED FROM "GRID SYSTEM FOR PROGRESSIVE MAPS IN THE U. S. ZONE A, U. S. C. & G. S. SPECIAL PUBLICATION NO. 89".
THE LAST THREE DIGITS OF THE GRID NUMBERS ARE OMITTED.
TEN THOUSAND FOOT GRID BASED ON NEW YORK PLANE COORDINATE SYSTEM, CENTRAL ZONE.
NOTE: OFFICERS USING THIS MAP WILL MAKE NECESSARY CORRECTIONS AND ADDITIONS WHICH COME TO THEIR ATTENTION AND MAIL DIRECT TO "THE CHIEF OF ENGINEERS, WASHINGTON, D. C."

APPROXIMATE MEAN
DECLINATION 1944
ANNUAL MAGNETIC CHANGE 0'

USGS
Historical File
Topographic Division

HOMER, N. Y.
N4237.5-W7607.5/7.5
EDITION OF 1944

U. S. G. S.
FILE COPY
REPRODUCTION AND DISTRIBUTION