

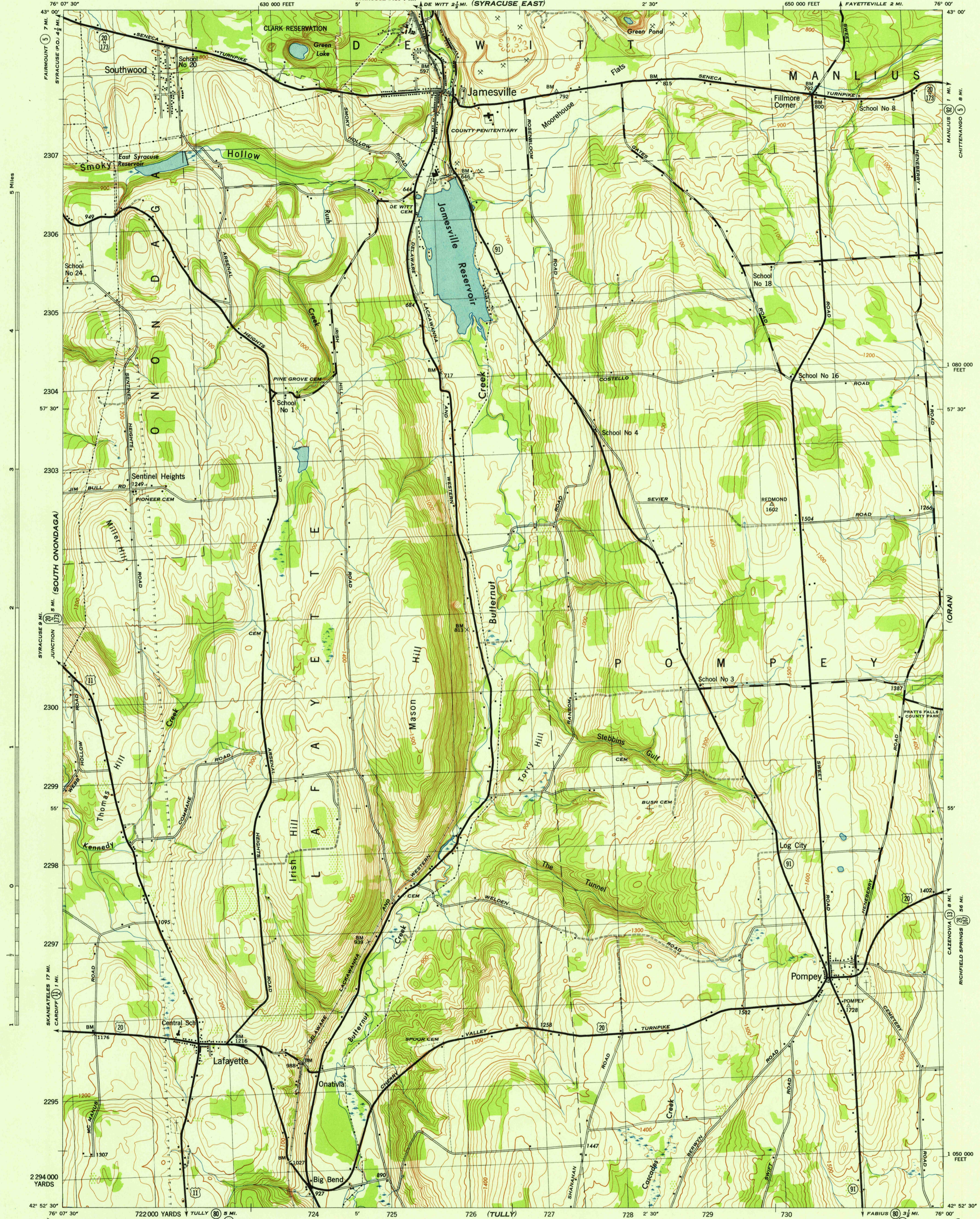
NEW YORK 1:31,680  
(ONONDAGA COUNTY)

WAR DEPARTMENT  
CORPS OF ENGINEERS, U. S. ARMY

JAMESVILLE QUADRANGLE  
7 1/2-MINUTE SERIES

(SYRACUSE WEST)

(MANLIUS)



5 Miles

1 080 000 FEET

1 050 000 FEET

1 050 000 FEET

Maped by Tennessee Valley Authority under direction of the Chief of Engineers, U. S. Army, 1943.  
Control by USGS, USGS, and TVA.  
Topography by U. S. Geological Survey and Tennessee Valley Authority by Stereophotogrammetric methods (Multiplex).  
Field completion surveys by TVA, 1942.  
Wide-angle photography by TVA, 1942.  
Polyconic projection. 1927 North American datum.

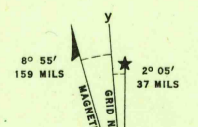
**ROAD CLASSIFICATION**  
1943  
— Loose-surface graded, heavy-duty road. — U. S. Route (11)  
— Secondary, hard-surface, all-weather road. — State Route (41)  
— More than two lanes indicated by note along road with tick at point of change. — LANE 1-LANE

THIS MAP COMPLIES WITH THE NATIONAL STANDARD MAP ACCURACY REQUIREMENTS.



CONTOUR INTERVAL 20 FEET  
DATUM IS MEAN SEA LEVEL

ONE THOUSAND YARD GRID COMPUTED FROM "GRID SYSTEM FOR PROGRESSIVE MAPS IN THE U. S." (ZONE A, U. S. G. O. S. SPECIAL PUBLICATION NO. 99)  
THE LAST THREE DIGITS OF THE GRID NUMBERS ARE OMITTED  
TEN THOUSAND FOOT GRID BASED ON NEW YORK PLANE COORDINATE SYSTEM, CENTRAL ZONE  
NOTE OFFICER USING THIS MAP WILL MAKE NECESSARY CORRECTIONS AND ADJUSTING WHICH COME TO THEIR ATTENTION AND MAIL DIRECT TO "THE CHIEF OF ENGINEERS, WASHINGTON, D. C."



USGS  
Historical File  
Topographic Division

U. S. G. O.  
FILE COPY  
Inspector and Editor

JAMESVILLE, N. Y.  
N4252.5-W7600/7.5  
EDITION OF 1943