

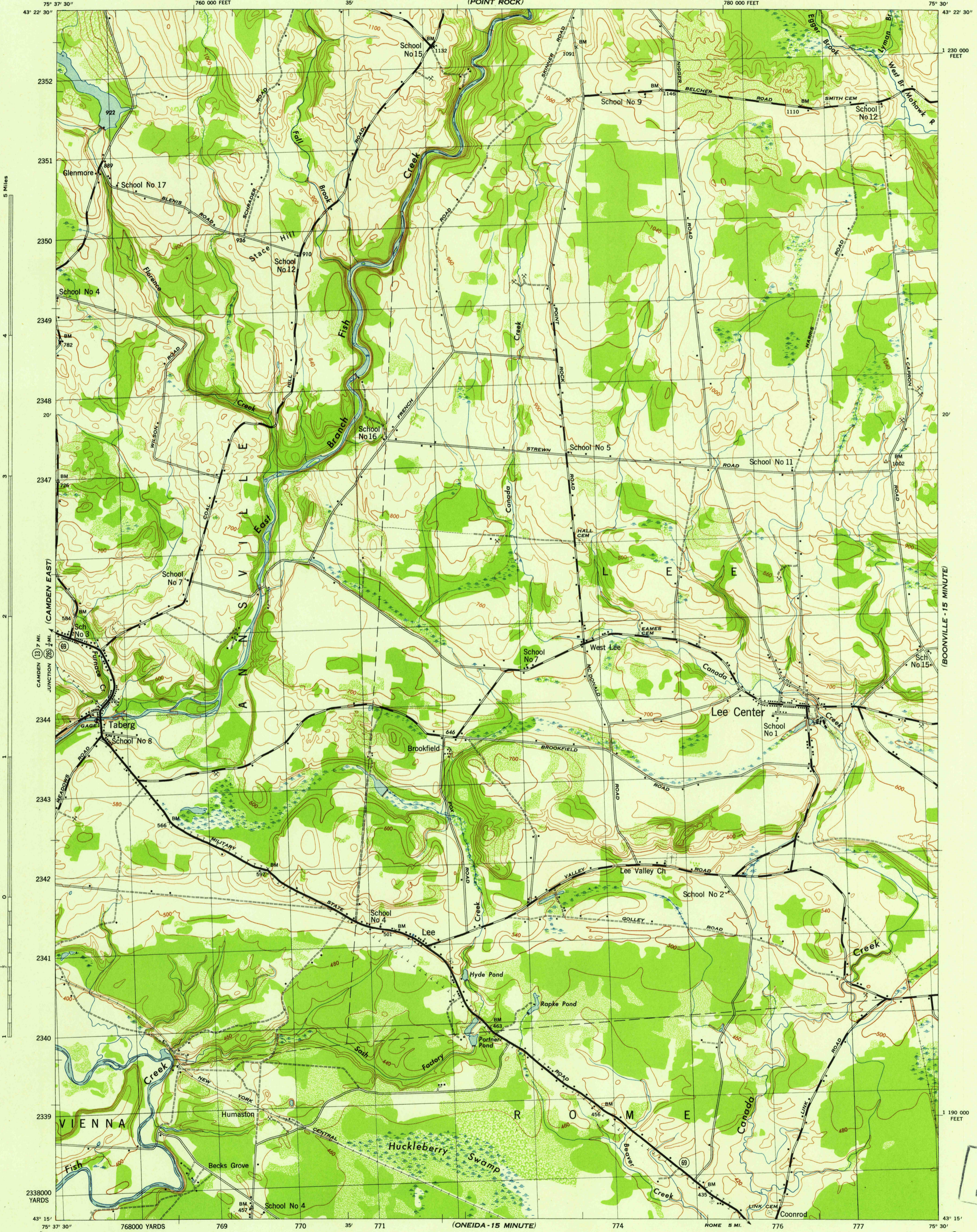
(EAST FLORENCE)

NEW YORK 1:31,680  
(ONEIDA COUNTY)

WAR DEPARTMENT  
CORPS OF ENGINEERS, U. S. ARMY

LEE CENTER QUADRANGLE  
7 1/2 - MINUTE SERIES

(BOONVILLE - 15 MINUTE)



5 Miles  
4  
3  
2  
1  
0  
1  
1

CAMDEN (EAST)  
CAMDEN JUNCTION (7 MI.)  
CAMDEN (13 7 MI.)  
CAMDEN (13 7 MI.)

(BOONVILLE - 15 MINUTE)

U.S.G.S.  
FILE COPY  
Inspector and Editor

Mapped by Tennessee Valley Authority under direction of the Chief of Engineers, U. S. Army, 1943.  
Control by USCGS, USGS, and TVA.  
Topography by U. S. Geological Survey and Tennessee Valley Authority by Stereophotogrammetric methods (Multiplex).  
Field completion surveys by TVA.  
Wide-angle photography for TVA, 1942.  
Polyconic projection. 1927 North American datum.

**ROAD CLASSIFICATION**  
1943  
Dependable hard-surface, heavy-duty road. U. S. Route  
Loose-surface graded, dry weather road. U. S. Route  
Secondary, hard-surface, all-weather road. State Route  
Dirt road. 3 LANE 1 4 LANE

Scale 1:31,680  
1 0 1000 2000 Yards  
1 Mile

CONTOUR INTERVAL 20 FEET  
DATUM IS MEAN SEA LEVEL  
ONE THOUSAND YARD GRID COMPUTED FROM "GRID SYSTEM FOR PROGRESSIVE MAPS IN THE U. S." ZONE A. U. S. C. & G. S. SPECIAL PUBLICATION NO. 59  
THE LAST THREE DIGITS OF THE GRID NUMBERS ARE OMITTED  
TEN THOUSAND FOOT GRID BASED ON NEW YORK PLANE COORDINATE SYSTEM, CENTRAL ZONE  
NOTE: OFFICERS USING THIS MAP WILL MAKE NECESSARY CORRECTIONS AND ADJUSTMENTS WHICH COME TO THEIR ATTENTION AND WILL DIRECT TO THE CHIEF OF ENGINEERS, WASHINGTON, D. C.

REPRODUCED BY THE TENNESSEE VALLEY AUTHORITY  
AND NO. 120144

USGS  
Historical File  
Topographic Division

**WOODLAND CLASSIFICATION**  
Dense woodland  
Dense brush  
Scattered brush and trees  
Orchard  
Vineyard

LEE CENTER, N. Y.  
N4315-W7530/7.5  
EDITION OF 1943

(ONEIDA - 15 MINUTE)

(CRISKANY - 15 MINUTE)

THIS MAP COMPLIES WITH THE NATIONAL STANDARD MAP ACCURACY REQUIREMENTS