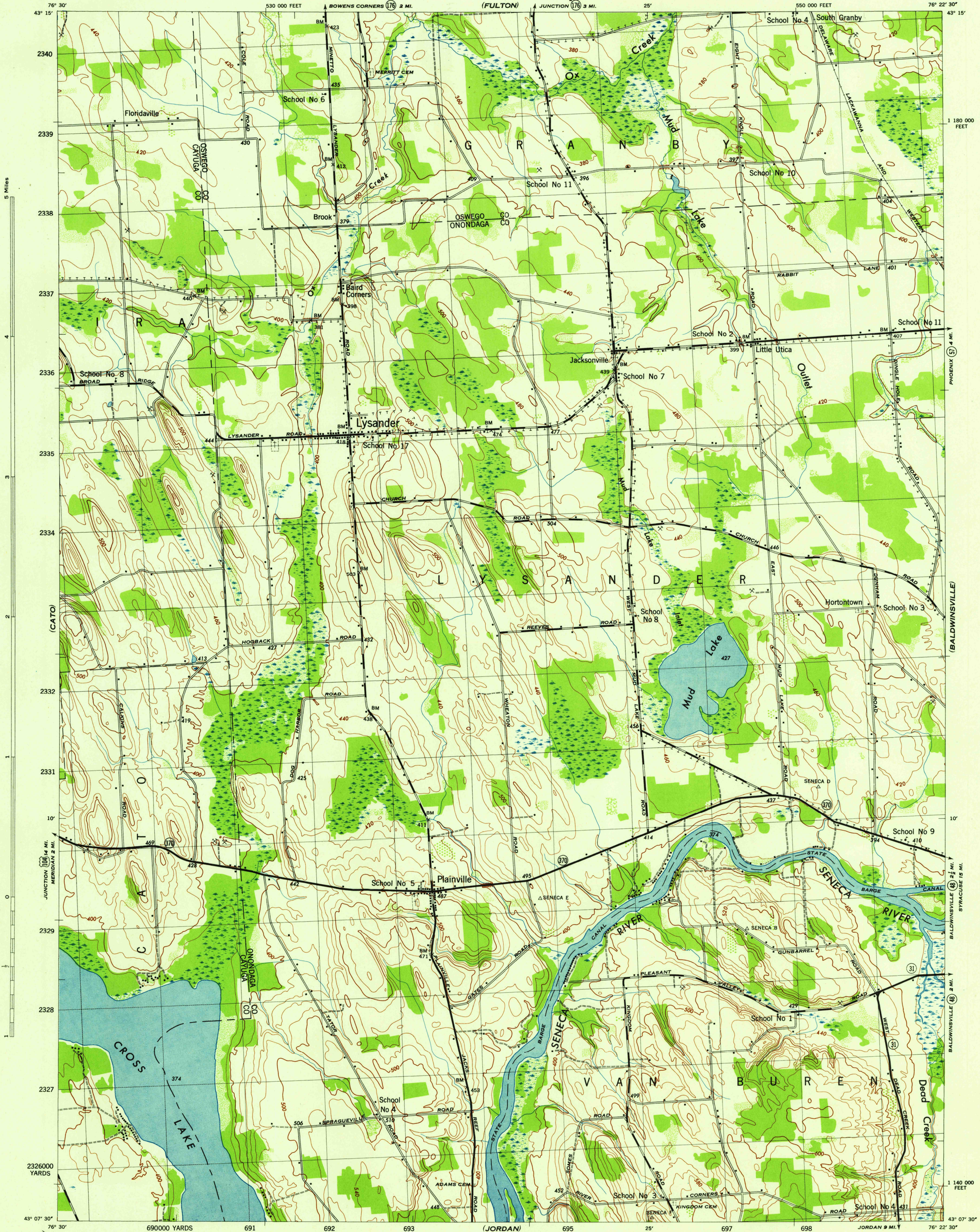


NEW YORK 1:31,680

WAR DEPARTMENT  
CORPS OF ENGINEERS, U. S. ARMY

LYSANDER QUADRANGLE  
7½-MINUTE SERIES

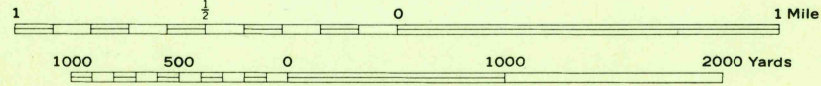


Map by Tennessee Valley Authority under direction of the  
Chief of Engineers, U. S. Army, 1943.  
Control by USC&GS, U. S. Lake Survey, and TVA.  
Topography by U. S. Geological Survey and Tennessee Valley Authority  
by Stereophotogrammetric methods (Multiplex).  
Field completion surveys by TVA.  
Wide-angle photography by TVA, 1942.  
Polyconic projection. 1927 North American datum.

ROAD CLASSIFICATION  
Dependable hard-surface,  
all-weather road. ——— U. S. Route 122  
Loose-surface graded,  
dry-weather road. ———  
Secondary, hard-surface,  
all-weather road. ———  
Dirt road. ———

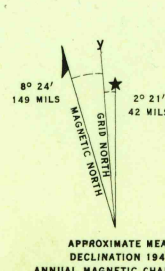
More than two lanes indicated by note along road with tick at point of change.  
3 LANE 4 LANE  
This map complies with the NATIONAL STANDARD MAP ACCURACY REQUIREMENTS.

Scale 1:31,680



CONTOUR INTERVAL 20 FEET  
DATUM IS MEAN SEA LEVEL

ONE THOUSAND YARD GRID COMPUTED FROM "GRID SYSTEM FOR PROGRESSIVE MAPS"  
IN THE U. S. "ZONE A, U. S. C. & G. S. SPECIAL PUBLICATION NO. 89"  
THE LAST THREE DIGITS OF THE GRID NUMBERS ARE OMITTED  
TEN THOUSAND FOOT GRID BASED ON NEW YORK PLANE COORDINATE SYSTEM, CENTRAL ZONE  
NOTE: OFFICERS USING THIS MAP WILL MARK HEREON CORRECTIONS AND ADDITIONS WHICH COME  
TO THEIR ATTENTION AND MAIL DIRECT TO "THE CHIEF OF ENGINEERS, WASHINGTON, D. C."



REPRODUCED BY THE TENNESSEE VALLEY AUTHORITY  
ARE NO. 120055  
USCS  
Historical File  
Topographic Division

WOODLAND CLASSIFICATION  
Dense woodland  
Dense brush  
Scattered brush and trees  
Orchard  
Vineyard

LYSANDER, N. Y.  
N4307.5-W7622.5/7.5  
EDITION OF 1943

FILE COPY  
Inspection and Editing