

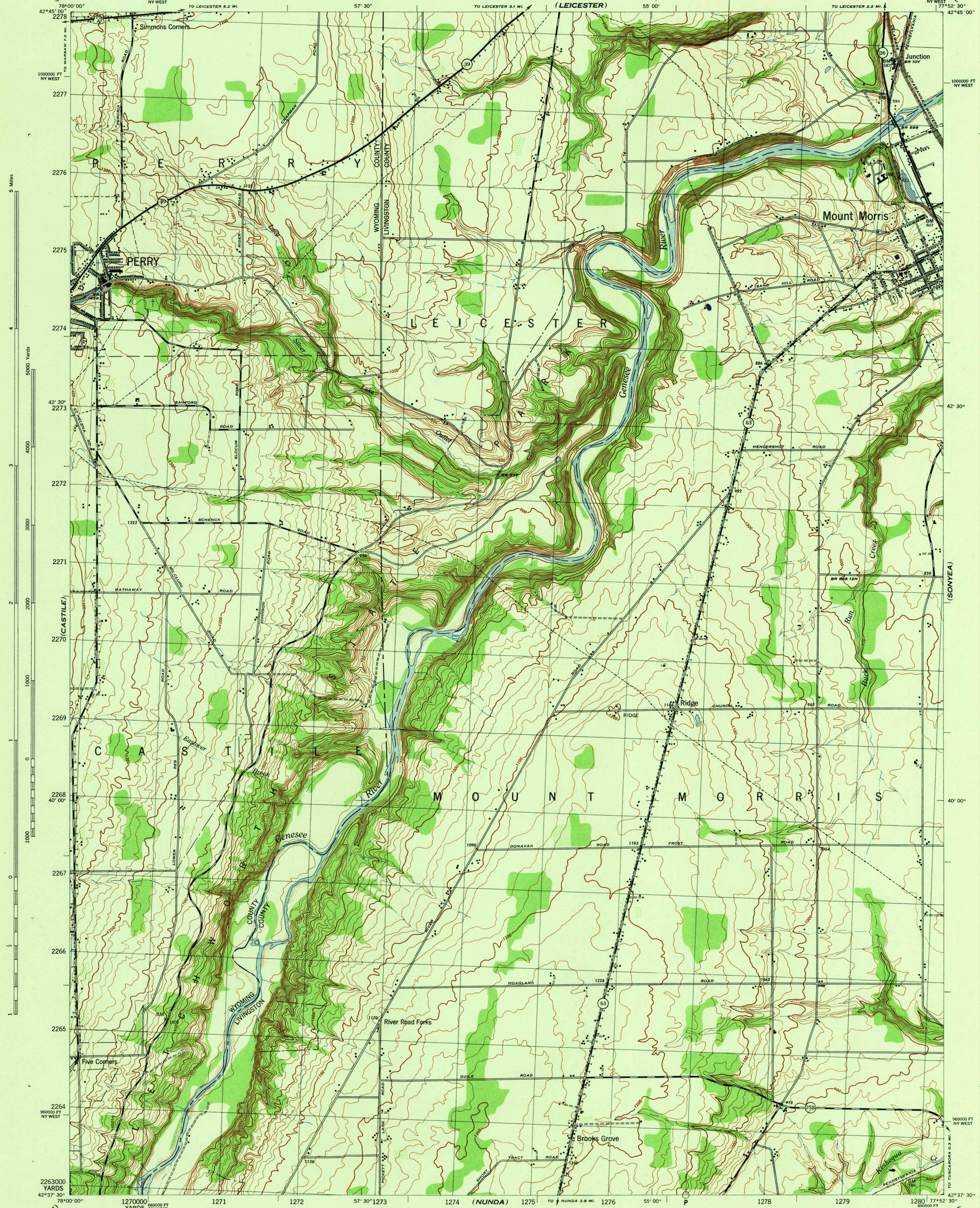
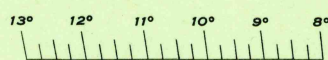
NEW YORK  
MOUNT MORRIS QUADRANGLE  
GRID ZONE "B"

N4237.5-W7752.5/7.5

WAR DEPARTMENT  
CORPS OF ENGINEERS, U. S. ARMY

NEW YORK  
MOUNT MORRIS QUADRANGLE  
GRID ZONE "B"

7.5 MINUTE SERIES



Prepared under the direction of the Chief of Engineers, U. S. Army, 1944.  
Horizontal and vertical control by U. S. Engineer Office, Little Rock, Arkansas, 1942,  
and U. S. Coast and Geodetic Survey, 1929.  
Topography by U. S. Engineer Office, Los Angeles, California, 1943,  
from aerial photographs utilizing photogrammetric plotting equipment (Multiplex).  
Aerial photography under the direction of U. S. Engineer Office, Little Rock, Arkansas, 1942.  
This map complies with the national standard map accuracy requirements.  
Polyconic projection, North American datum, 1927.

**ROAD CLASSIFICATION 1942**  
Dependable hard-surface, heavy-duty road. Loose-surface graded, dry weather road. U. S. Route.  
Secondary, hard-surface, all-weather road. Dirt road. State Route.  
More than two lanes indicated by note along road with tick at point of change. 3 LANE 4 LANE

CONTOUR INTERVAL 20 FEET  
DATUM IS MEAN SEA LEVEL (1929 ADJ.)

ONE THOUSAND YARD GRID COMPUTED FROM "GRID SYSTEM FOR PROGRESSIVE MAPS"  
IN THE U. S. - ZONE B U. S. C. & G. S. SPECIAL PUBLICATION NO. 18  
(THE LAST THREE DIGITS OF THE GRID NUMBERS ARE OMITTED)  
FIVE THOUSAND FOOT GRID BASED ON NEW YORK TRANSVERSE MERCATOR PLANE  
COORDINATE SYSTEM, WEST ZONE

NOTE: OFFICERS USING THIS MAP WILL MARK HEREON CORRECTIONS AND ADDITIONS WHICH COME  
TO THEIR ATTENTION AND SEND THEM TO THE CHIEF OF ENGINEERS, WASHINGTON, D. C.

Use diagram only to obtain numerical values.  
To determine magnetic north line, connect the  
given point "P" on the north edge of the map  
with the value of the angle between grid  
and magnetic north, as plotted on the degree scale  
at the north edge of the map.

BRIDGE DATA		WOODLAND CLASSIFICATION	
Floor elevation in feet	BR 396	Woodland	
Rated capacity in tons	15T	Brush	
Vertical clearance in feet	12.4V	Orchard	
Horizontal clearance (width) in feet	16H	Vineyard	
When less than 16 feet			
When less than 18 feet			

MOUNT MORRIS, N. Y.  
N4237.5-W7752.5/7.5

