

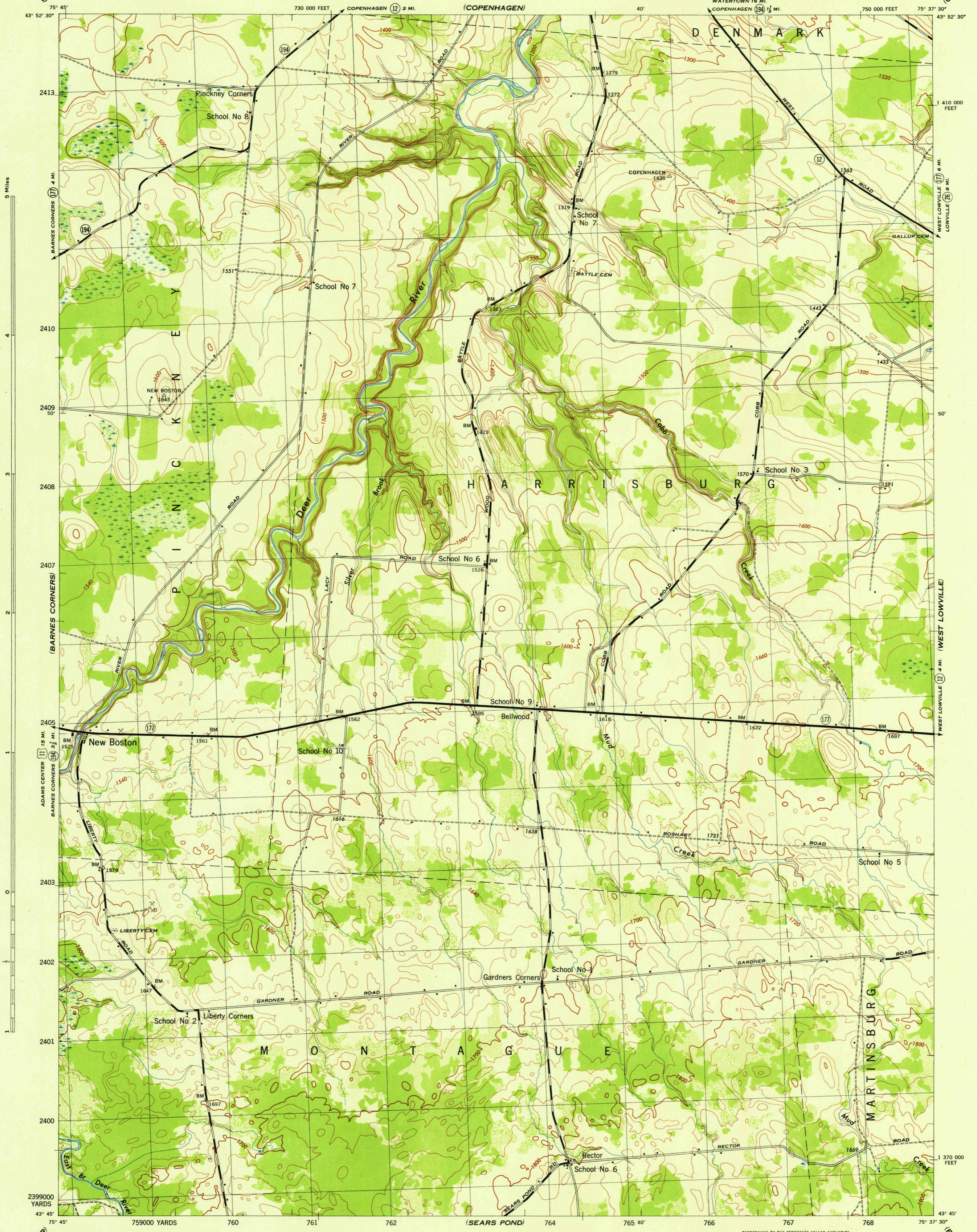
(SOUTH RUTLAND)

NEW YORK 1:31,680
(LEWIS COUNTY)

WAR DEPARTMENT
CORPS OF ENGINEERS, U. S. ARMY

NEW BOSTON QUADRANGLE
7 1/2 - MINUTE SERIES

(CARTHAGE)



Map by Tennessee Valley Authority under direction of the Chief of Engineers, U. S. Army, 1943.
Control by USC&GS and TVA.
Topography by U. S. Geological Survey and Tennessee Valley Authority by Stereophotogrammetric methods (Multiplex).
Field completion surveys by TVA.
Wide-angle photography by TVA, 1942.
Polyconic projection. 1927 North American datum.

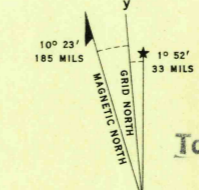
ROAD CLASSIFICATION
 1943
 Dependable hard-surface, all-weather road. ——— U. S. Route 177
 Loose-surface graded, dry weather road. ——— State Route 177
 Secondary, hard-surface, heavy-duty road. ——— State Route 177
 Dirt road. ——— State Route 177
 More than two lanes indicated by note along road with tick at point of change. 3 LANE 4 LANE

Scale 1:31,680
 1000 500 0 1000 2000 Yards
 1 Mile

CONTOUR INTERVAL 20 FEET
 DATUM IS MEAN SEA LEVEL

ONE THOUSAND YARD GRID COMPUTED FROM "GRID SYSTEM FOR PROGRESSIVE MAPS IN THE U. S." ZONE A, U. S. C. & G. S. SPECIAL PUBLICATION NO. 85
 THE LAST THREE DIGITS OF THE GRID NUMBERS ARE OMITTED
 TEN THOUSAND FOOT GRID BASED ON NEW YORK PLANE COORDINATE SYSTEM, CENTRAL ZONE
 NOTE: OFFICERS USING THIS MAP WILL WANT REFRESH CORRECTIONS AND ADDITIONS WHICH COME TO THEIR ATTENTION AND SHALL DIRECT TO THE CHIEF OF ENGINEERS, WASHINGTON, D. C.

REPRODUCED BY THE TENNESSEE VALLEY AUTHORITY
 AMS NO. 120147



WOODLAND CLASSIFICATION
 Dense woodland
 Dense brush
 Scattered brush and trees
 Orchard
 Vineyard

USCS
 Historical File
 Topographic Division

NEW BOSTON, N. Y.
 N4345-W7537.5/7.5
 EDITION OF 1943

(WORTH CENTER)

(PAGE)