

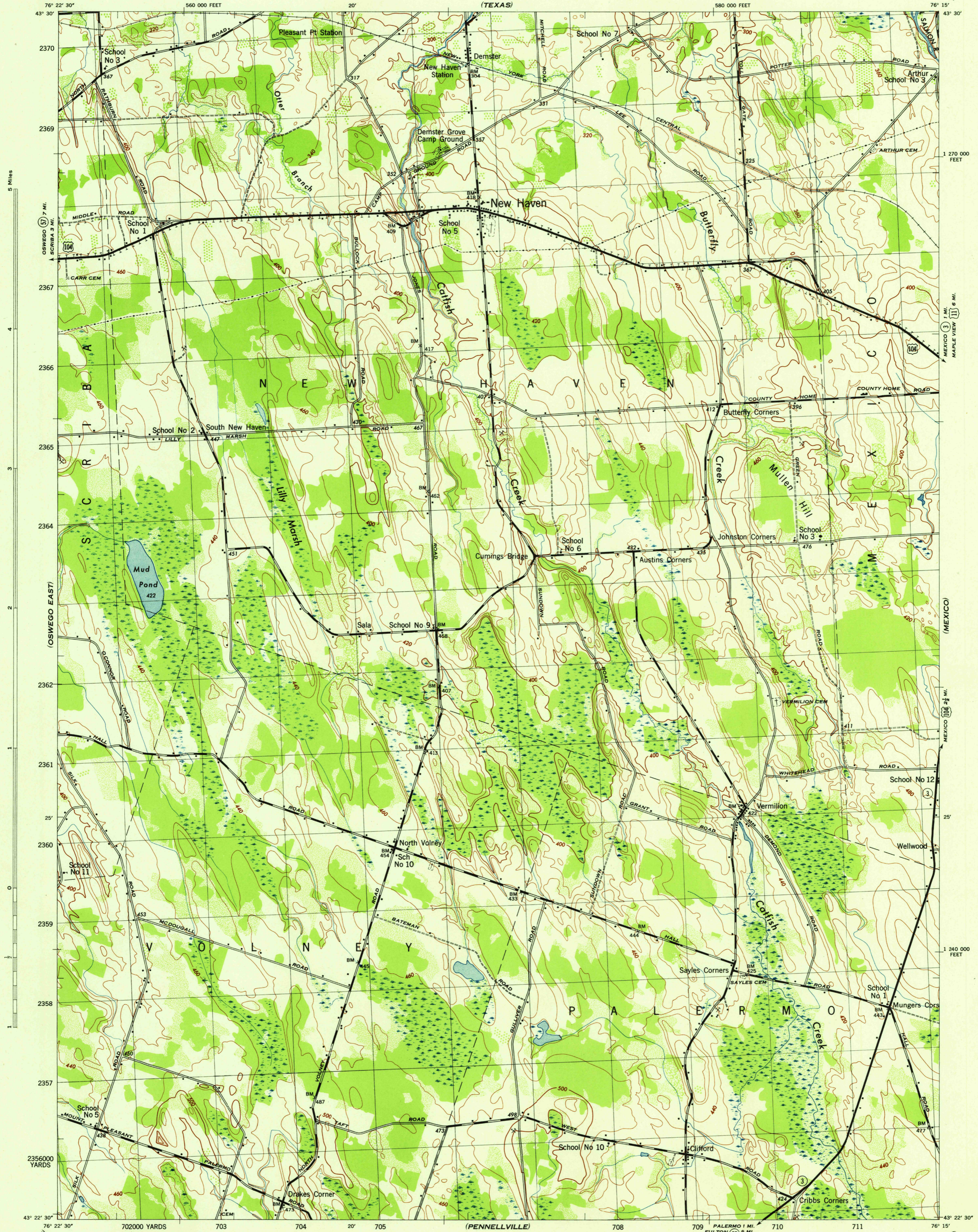
(WEST OF TEXAS)

NEW YORK 1:31,680
(OSWEGO COUNTY)

WAR DEPARTMENT
CORPS OF ENGINEERS, U. S. ARMY

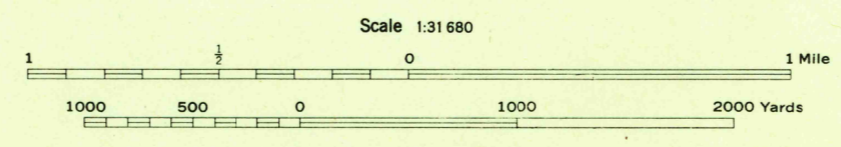
NEW HAVEN QUADRANGLE
7 1/2 - MINUTE SERIES

(PULASKI)

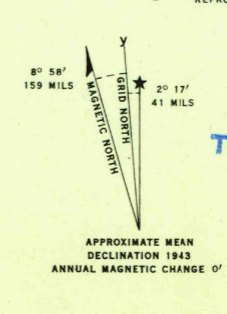


Mapped by Tennessee Valley Authority under direction of the Chief of Engineers, U. S. Army, 1943.
Control by USCGS, USOS, and TVA.
Topography by U. S. Geological Survey and Tennessee Valley Authority by Stereophotogrammetric methods (Multiplex).
Field completion surveys by TVA.
Wide-angle photography for TVA, 1942.
Polyconic projection. 1927 North American datum.

ROAD CLASSIFICATION
 Dependable hard-surface, all-weather road. ——— U. S. Route
 Loose-surface graded, dry weather road. ——— State Route
 Secondary, hard-surface, all-weather road. ——— State Route
 Dirt road. ——— State Route
 More than two lanes indicated by note along road with tick at point of change. ——— LANE 1 & LANE 2
 THIS MAP COMPLIES WITH THE NATIONAL STANDARD MAP ACCURACY REQUIREMENTS.



Scale 1:31,680
 CONTOUR INTERVAL 20 FEET
 DATUM IS MEAN SEA LEVEL
 ONE THOUSAND YARD GRID COMPUTED FROM "GRID SYSTEM FOR PROGRESSIVE MAPS IN THE U. S." ZONE A, U. S. G. & S. SPECIAL PUBLICATION NO. 59
 THE LAST THREE DIGITS OF THE GRID NUMBERS ARE OMITTED
 TEN THOUSAND FOOT GRID BASED ON NEW YORK PLANE COORDINATE SYSTEM, CENTRAL ZONE
 NOTE: OFFICERS USING THIS MAP WILL WANT PERIODIC CORRECTIONS AND ADDITIONS WHICH COME TO THEIR ATTENTION AND MAIL DIRECT TO "THE CHIEF OF ENGINEERS, WASHINGTON, D. C."



USCS
Historical File
Topographic Division

WOODLAND CLASSIFICATION
 Dense woodland
 Dense brush
 Scattered brush and trees
 Orchard
 Vineyard

NEW HAVEN, N. Y.
N4322.5-W7615/7.5
EDITION OF 1943

U. S. G. S.
FILE COPY
Inspection and Editing

5 Miles

OSWEGO (5) 7 MI.
SCRIBA (3) 3 MI.

OSWEGO (5) 7 MI.
SCRIBA (3) 3 MI.

OSWEGO (5) 7 MI.
SCRIBA (3) 3 MI.

OSWEGO (5) 7 MI.
SCRIBA (3) 3 MI.

OSWEGO (5) 7 MI.
SCRIBA (3) 3 MI.

OSWEGO (5) 7 MI.
SCRIBA (3) 3 MI.

OSWEGO (5) 7 MI.
SCRIBA (3) 3 MI.

OSWEGO (5) 7 MI.
SCRIBA (3) 3 MI.

OSWEGO (5) 7 MI.
SCRIBA (3) 3 MI.

OSWEGO (5) 7 MI.
SCRIBA (3) 3 MI.

OSWEGO (5) 7 MI.
SCRIBA (3) 3 MI.

OSWEGO (5) 7 MI.
SCRIBA (3) 3 MI.

OSWEGO (5) 7 MI.
SCRIBA (3) 3 MI.

OSWEGO (5) 7 MI.
SCRIBA (3) 3 MI.

OSWEGO (5) 7 MI.
SCRIBA (3) 3 MI.

OSWEGO (5) 7 MI.
SCRIBA (3) 3 MI.

OSWEGO (5) 7 MI.
SCRIBA (3) 3 MI.

1 270 000 FEET

1 270 000 FEET

1 270 000 FEET

1 270 000 FEET

1 270 000 FEET

1 270 000 FEET

1 270 000 FEET

1 270 000 FEET

1 270 000 FEET

1 270 000 FEET

1 270 000 FEET

1 270 000 FEET

1 270 000 FEET

1 270 000 FEET

1 270 000 FEET

1 270 000 FEET

1 270 000 FEET

1 270 000 FEET

1 270 000 FEET

1 270 000 FEET

1 270 000 FEET