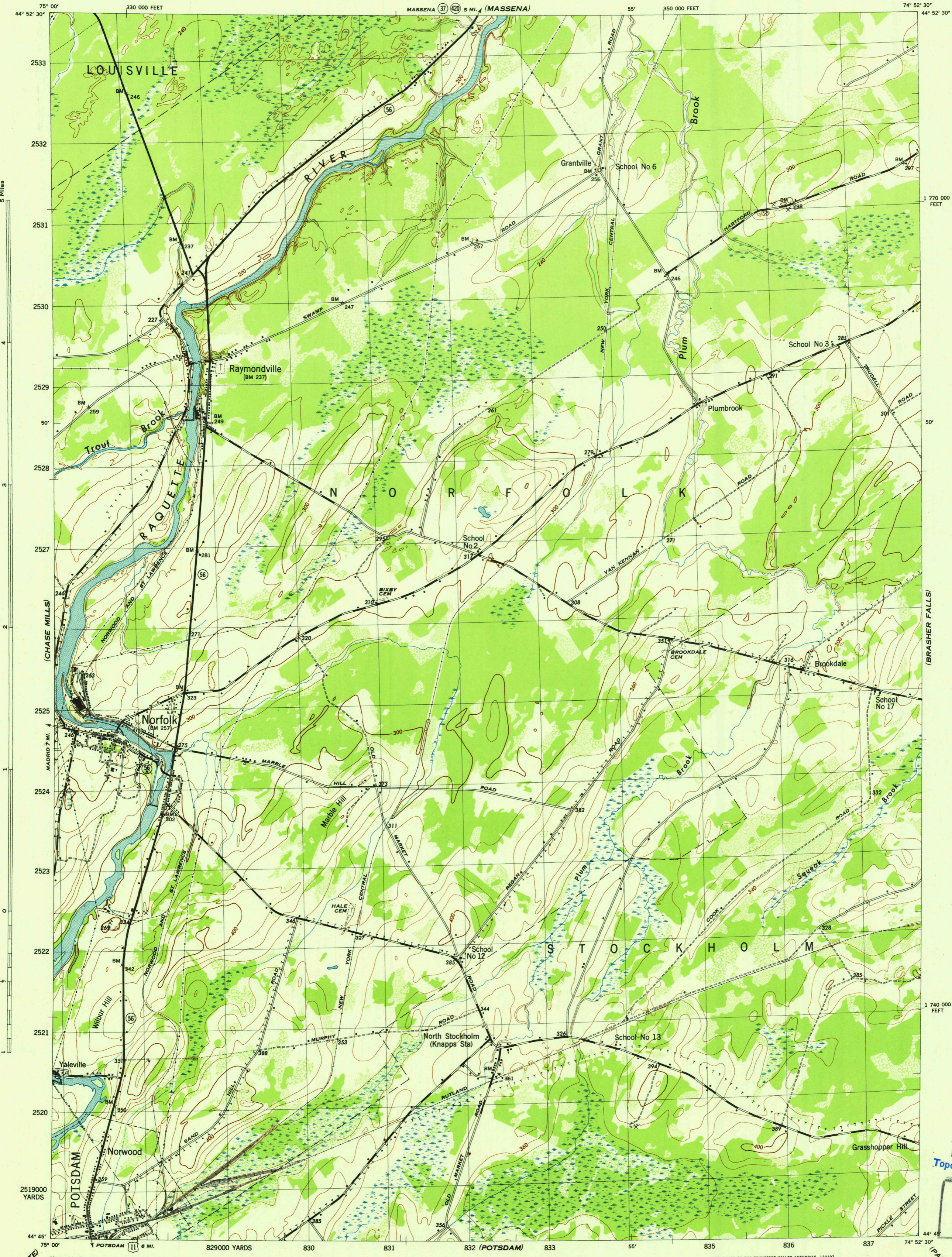


NEW YORK 1:31,680
(ST LAWRENCE COUNTY)

WAR DEPARTMENT
CORPS OF ENGINEERS, U. S. ARMY

NORFOLK QUADRANGLE
7 1/2 - MINUTE SERIES



(LOUISVILLE)
CANTON-15 MINUTE

USGS
Historical File
Topographic Division
U.S.G.A.
FILE COPY
Inspection and Editing

Maped by Tennessee Valley Authority under direction of the Chief of Engineers, U. S. Army, 1942.
Control by USCGS, and TVA
Topography by Tennessee Valley Authority plane-table surveys.
Culture and drainage in part compiled from aerial photographs.
Wide-angle photography for TVA, 1942.
Polyconic projection, 1927 North American datum.

ROAD CLASSIFICATION
Dependable hard surface, heavy-duty road. ——— Loose-surface graded, dry weather road. ——— U. S. Route 101
Secondary, hard surface, all-weather road. ——— Dirt road. ——— State Route 56
More than two lanes indicated by note along road with tick at point of change. ——— LANE 4 LANE

THIS MAP COMPLIES WITH THE NATIONAL STANDARD MAP ACCURACY REQUIREMENTS.

Scale 1:31,680
1 000 500 0 1000 2000 Yards
1 Mile

CONTOUR INTERVAL 20 FEET
DATUM IS MEAN SEA LEVEL

ONE THOUSAND YARD GRID COMPUTED FROM "GRID SYSTEM FOR PROGRESSIVE MAPS IN THE U. S. ZONE A, U. S. C. & S. SPECIAL PUBLICATION NO. 99"
THE LAST THREE DIGITS OF THE GRID NUMBERS ARE OMITTED

TEN THOUSAND FOOT GRID BASED ON NEW YORK PLANE COORDINATE SYSTEM, EASTERN ZONE
NOTE: OFFICERS USING THIS MAP WILL HAVE FREQUENT CORRECTIONS AND ADDITIONS WHICH OWE TO THEIR ATTENTION AND MAIL DIRECT TO "THE CHIEF OF ENGINEERS, WASHINGTON, D. C."

REPRODUCED BY THE TENNESSEE VALLEY AUTHORITY 150107

APPROXIMATE MEAN DECLINATION 1942
ANNUAL MAGNETIC CHANGE 0'

WOODLAND CLASSIFICATION
Dense woodland
Dense brush
Scattered brush and trees
Orchard
Vineyard

NORFOLK, N. Y.
N4445-W7452.5/7.5
EDITION OF 1943