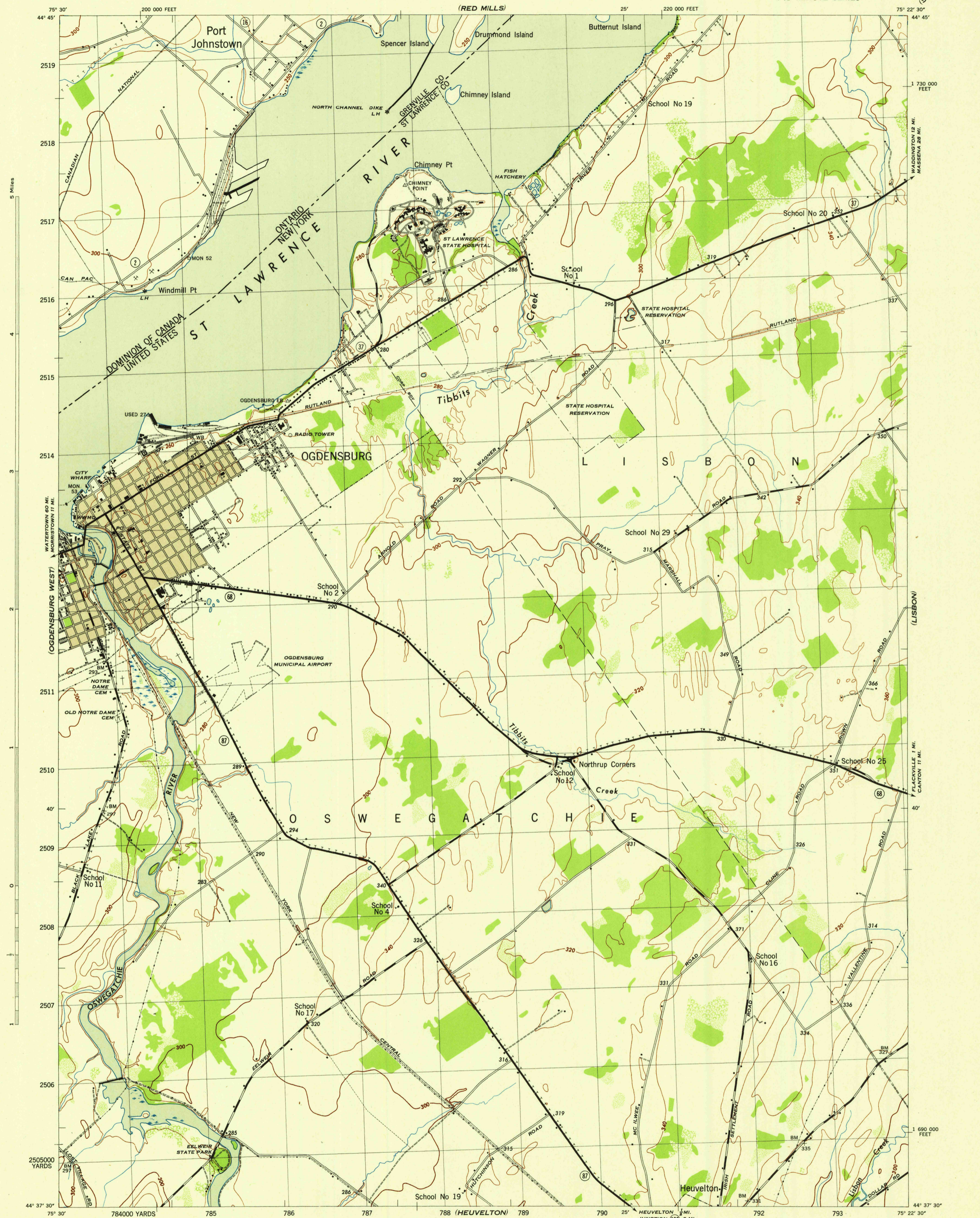


(SPARROWHAWK POINT)

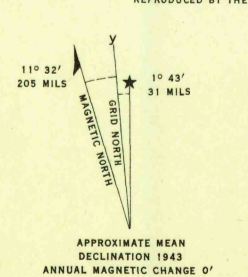
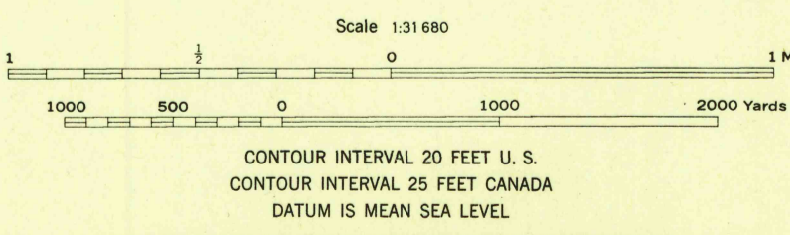


Maped by Tennessee Valley Authority under direction of the Chief of Engineers, U. S. Army, 1942.
Control by USC&GS, U. S. Lake Survey, International Waterways Commission, and TVA.
Topography by Tennessee Valley Authority plane-table surveys.
Culture and drainage in part compiled from aerial photographs.
Wide angle photography for TVA, 1942.
Polyconic projection, 1927 North American datum.
Canadian topography projected from maps of Canadian Department of National Defense, 1905. Revised 1938.
Canadian planimetry revised from aerial photographs, 1942. Not field inspected.

ROAD CLASSIFICATION

Dependable hard-surface, all-weather road. Loose-surface graded, heavy-duty road. U. S. Route 18. Secondary, hard-surface, all-weather road. Dirt road. State Route 87. More than two lanes indicated by tick along road with tick at point of change. 3 LANE 4 LANE. Gray tint indicates areas in which only landmark buildings are shown.

THIS MAP COMPLIES WITH THE NATIONAL STANDARD MAP ACCURACY REQUIREMENTS.



WOODLAND CLASSIFICATION

- Dense woodland
- Dense brush
- Scattered brush and trees
- Orchard
- Vineyard

OGDENSBURG EAST, N. Y.-ONT.
N4437.5-W7522.5/7.5
EDITION OF 1943

EDWARDSVILLE

(RENSSELAER FALLS)