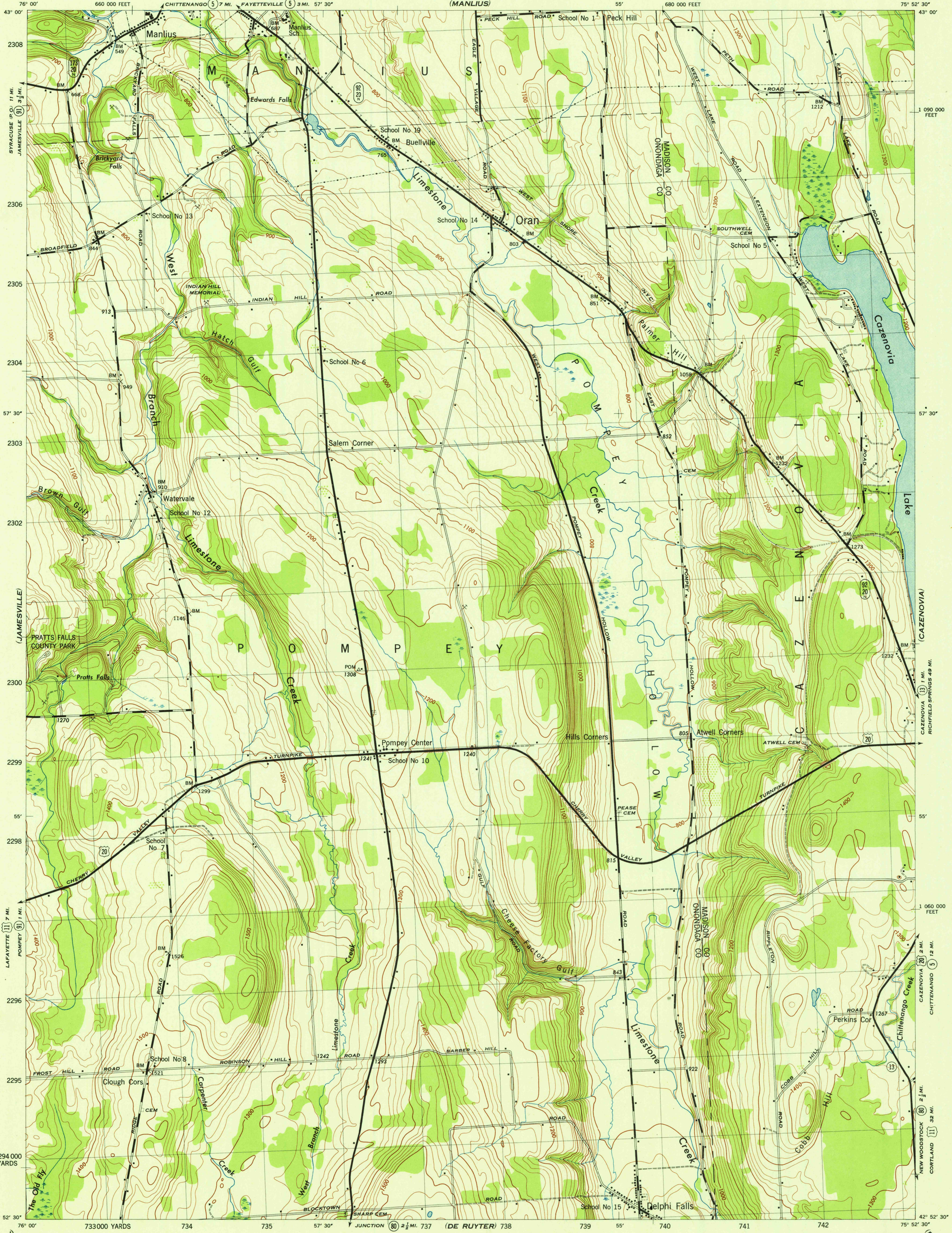


(SYRACUSE EAST)  
NEW YORK  
SCALE 1:31,680  
660 000 FEET  
SYRACUSE 11 MI.  
FAYETTEVILLE (5) 7 MI. 57° 30'  
(MANLIUS)  
680 000 FEET  
75° 52' 30"  
43° 00'  
2308  
2306  
2305  
2304  
2303  
2302  
2300  
2299  
2298  
2296  
2295  
2294  
229000 YARDS  
76° 00'  
730000 YARDS  
734  
735  
57° 30'  
JUNCTION (80) 2 1/2 MI. 737  
(DE RUYTER) 738  
739  
55°  
740  
741  
742  
75° 52' 30"  
42° 52' 30'

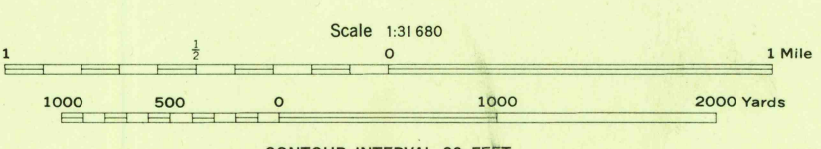
WAR DEPARTMENT  
CORPS OF ENGINEERS, U. S. ARMY

ORAN QUADRANGLE  
7 1/2 - MINUTE SERIES  
(CANASTOTA)

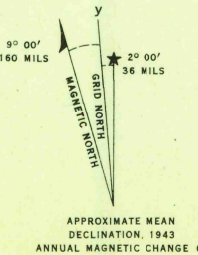


Maped by Tennessee Valley Authority under direction of the Chief of Engineers, U. S. Army, 1943.  
Control by USCGS, USGS, and TVA.  
Topography by U. S. Geological Survey and Tennessee Valley Authority by Stereophotogrammetric methods (Multiplex).  
Field completion surveys by TVA.  
Wide-angle photography for TVA, 1942.  
Polyconic projection, 1927 North American datum.

**ROAD CLASSIFICATION**  
1943  
Dependable hard-surface, all-weather road. U. S. Route (27)  
Secondary, hard-surface, all-weather road. U. S. Route (12)  
More than two lanes indicated by note along road with tick at point of change. 3 LANE 4 LANE



ONE THOUSAND YARD GRID COMPUTED FROM GRID SYSTEM FOR PROGRESSIVE MAPS IN THE U. S. ZONE A, U. S. C. & G. S. SPECIAL PUBLICATION NO. 59  
THE LAST THREE DIGITS OF THE GRID NUMBERS ARE OMITTED  
TEN THOUSAND FOOT GRID BASED ON NEW YORK PLANE COORDINATE SYSTEM, CENTRAL ZONE  
NOTE: OFFICERS USING THIS MAP WILL MAKE HEIGHT CORRECTIONS AND ADDITIONS WHICH COME TO THEIR ATTENTION AND WILL DIRECT TO THE CHIEF OF ENGINEERS, WASHINGTON, D. C.



USGS  
Historical File  
Topographic Division

FILE COPY  
Inspection and Editing

ORAN, N. Y.  
N4252.5-W7552.5/7.5  
EDITION OF 1943