

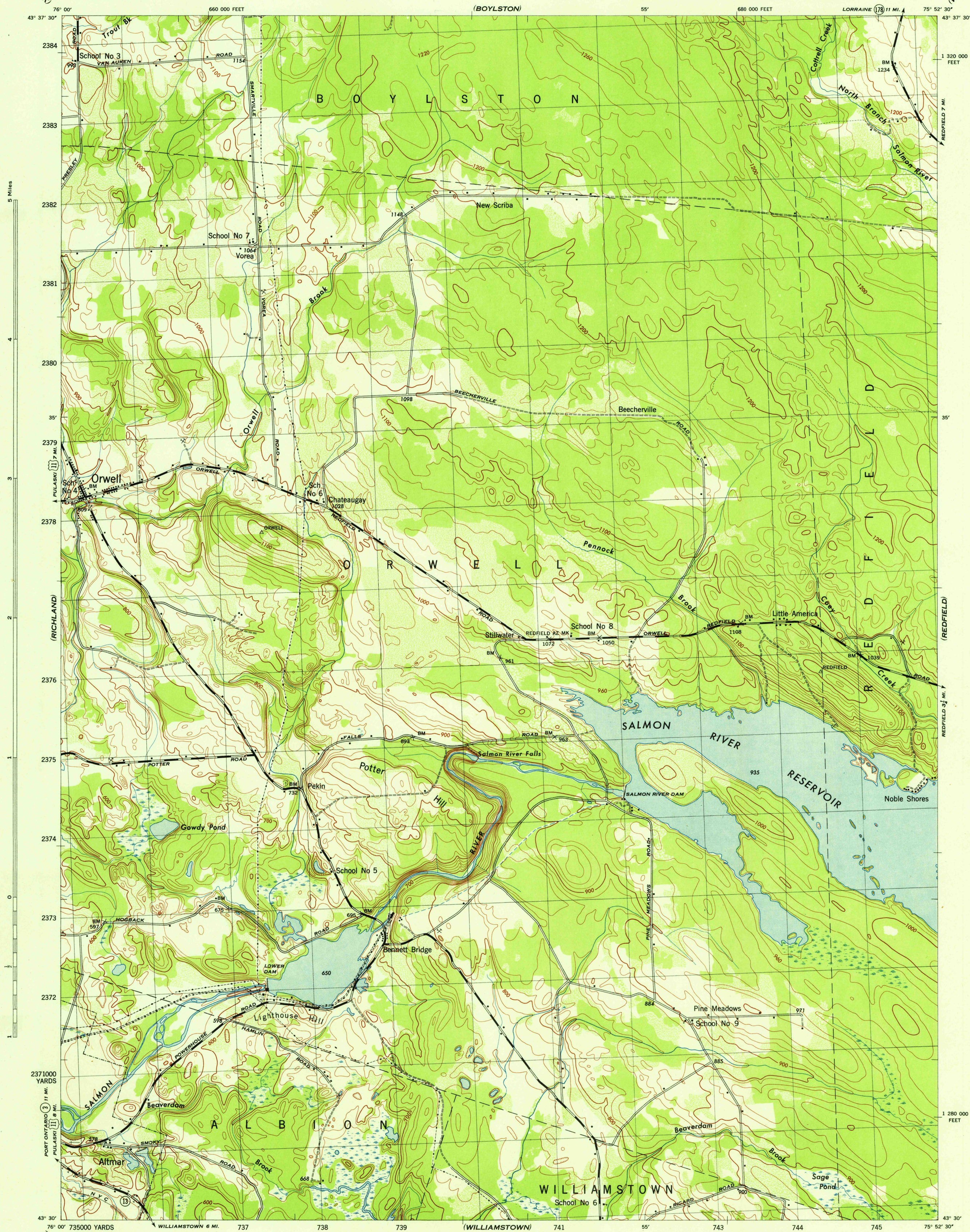
(SANDY CREEK)

NEW YORK 1:31,680  
(OSWEGO COUNTY)

WAR DEPARTMENT  
CORPS OF ENGINEERS, U. S. ARMY

ORWELL QUADRANGLE  
7½-MINUTE SERIES

(WORTH CENTER)



Map by Tennessee Valley Authority under direction of the  
Chief of Engineers, U. S. Army, 1943.  
Control by USGS, USGS, and TVA.  
Topography by U. S. Geological Survey and Tennessee Valley Authority  
by Stereophotogrammetric methods (Multiplex).  
Field completion surveys by TVA.  
Wide-angle photography for TVA, 1942.  
Polyconic projection, 1927 North American datum.

ROAD CLASSIFICATION  
1943  
Dependable hard-surface,  
heavy-duty road.  
Loose-surface graded,  
dry weather road.  
Secondary, hard-surface,  
all-weather road.  
Dirt road.  
U. S. Route 35  
State Route 126  
More than two lanes indicated by note along road with tick at point of change.

THIS MAP COMPLIES WITH THE NATIONAL STANDARD MAP ACCURACY REQUIREMENTS.

Scale 1:31,680  
1 0 1 Mile  
1000 500 0 1000 2000 Yards  
CONTOUR INTERVAL 20 FEET  
DATUM IS MEAN SEA LEVEL

ONE THOUSAND YARD GRID COMPUTED FROM "GRID SYSTEM FOR PROGRESSIVE MAPS  
IN THE U. S." ZONE A, U. S. C. & G. S. SPECIAL PUBLICATION NO. 59  
THE LAST THREE DIGITS OF THE GRID NUMBERS ARE OMITTED  
TEN THOUSAND FOOT GRID BASED ON NEW YORK PLANE COORDINATE SYSTEM, CENTRAL ZONE  
NOTE: OFFICERS USING THIS MAP WILL HAVE HEREON CORRECTIONS AND AMENDMENTS WHICH COME  
TO THEIR ATTENTION AND WILL DIRECT TO "THE CHIEF OF ENGINEERS, WASHINGTON, D. C."

REPRODUCED BY THE TENNESSEE VALLEY AUTHORITY  
AND NO. 120150

USGS  
Historical  
Topographic Division  
APPROXIMATE MEAN  
DECLINATION 1943  
ANNUAL MAGNETIC CHANGE 0'

WOODLAND CLASSIFICATION

Dense woodland  
Dense brush  
Scattered brush and trees  
Orchard  
Vineyard

ORWELL, N. Y.  
N4330-W7552.5/7.5  
EDITION OF 1943

U. S. G. S.  
FILE COPY  
Inspection and Editing