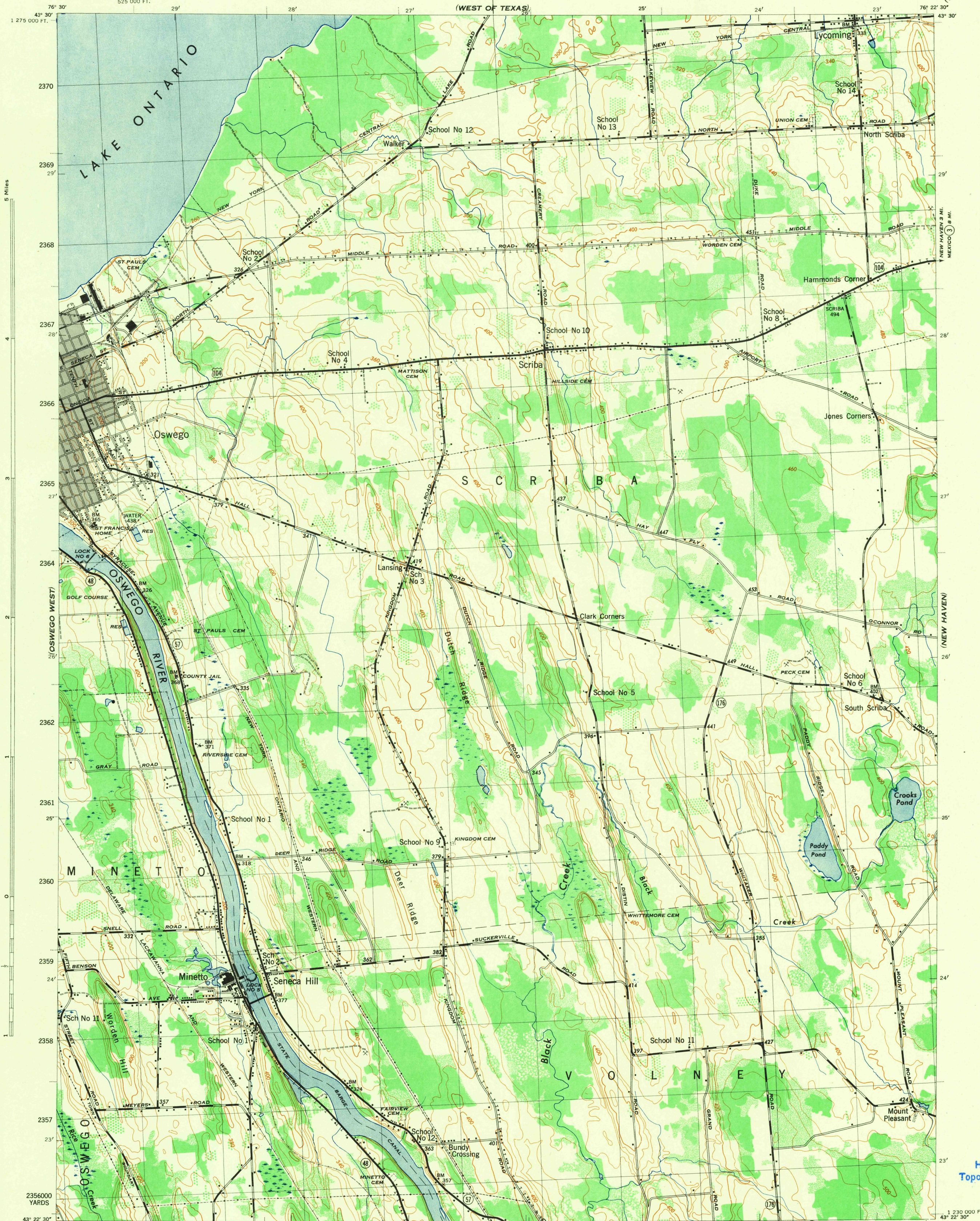


NEW YORK 1:31,680  
(OSWEGO COUNTY)  
525 000 FT.

WAR DEPARTMENT  
CORPS OF ENGINEERS, U. S. ARMY

OSWEGO EAST QUADRANGLE  
7 1/2 - MINUTE SERIES



5 Miles

OSWEGO WEST

MINETTO

OSWEGO

NEW YORK  
NEW HAVEN 3 MI.  
MEXICO 3 MI.

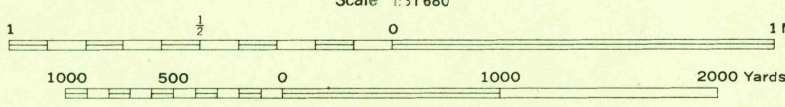
(NEW HAVEN)

(RENNELLVILLE)

(ANNIBAL)

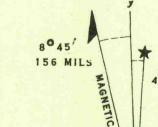
First Edition 1943.  
Mapped by Tennessee Valley Authority under direction of the Chief of Engineers, U. S. Army, 1943.  
Control by USCGS, USGS, and TVA.  
Topography by U. S. Geological Survey and Tennessee Valley Authority by Stereophotogrammetric methods (Multiplex).  
Field completion surveys by TVA.  
Wide-angle photography for TVA, 1942.  
Polyconic projection. 1927 North American datum.

**ROAD CLASSIFICATION**  
Dependable hard-surface, heavy-duty road. U. S. Route 167  
Secondary hard-surface, all-weather road. State Route 4  
Loose surface graded, dry weather road.  
Dirt road.  
3 LANE 4 LANE  
More than two lanes indicated by note along road with tick at point of change.  
Gray tint indicates areas in which only landmark buildings are shown.



CONTOUR INTERVAL 20 FEET  
DATUM IS MEAN SEA LEVEL

ONE THOUSAND YARD GRID COMPUTED FROM "GRID SYSTEM FOR PROGRESSIVE MAPS IN THE U. S." ZONE A. U. S. C. & G. S. SPECIAL PUBLICATION NO. 59  
THE LAST THREE DIGITS OF THE GRID NUMBERS ARE OMITTED.  
FIVE THOUSAND FOOT GRID BASED ON NEW YORK PLANE COORDINATE SYSTEM, CENTRAL ZONE  
NOTE: OFFICERS USING THIS MAP WILL MARK PERSON CORRECTIONS AND ADDITIONS WHICH COME TO THEIR ATTENTION AND WILL DIRECT TO "THE CHIEF OF ENGINEERS, WASHINGTON, D. C."



APPROXIMATE MEAN DECLINATION 1943  
NO ANNUAL MAGNETIC CHANGE DECREASE

Dense woodland  
Dense brush  
Scattered brush and trees  
Orchard  
Vineyard

OSWEGO EAST, N. Y.  
N4322.5-W7622.5/7.5

USGS  
Historical File  
Topographic Division

USGS  
FILE COPY  
Reproduction and Editing

Use diagram only to obtain numerical values. To determine magnetic north line, connect the pivot point "P" on the south edge of the map with the value of the angle between GRID NORTH and MAGNETIC NORTH, as plotted on the degree scale at the north edge of the map.