

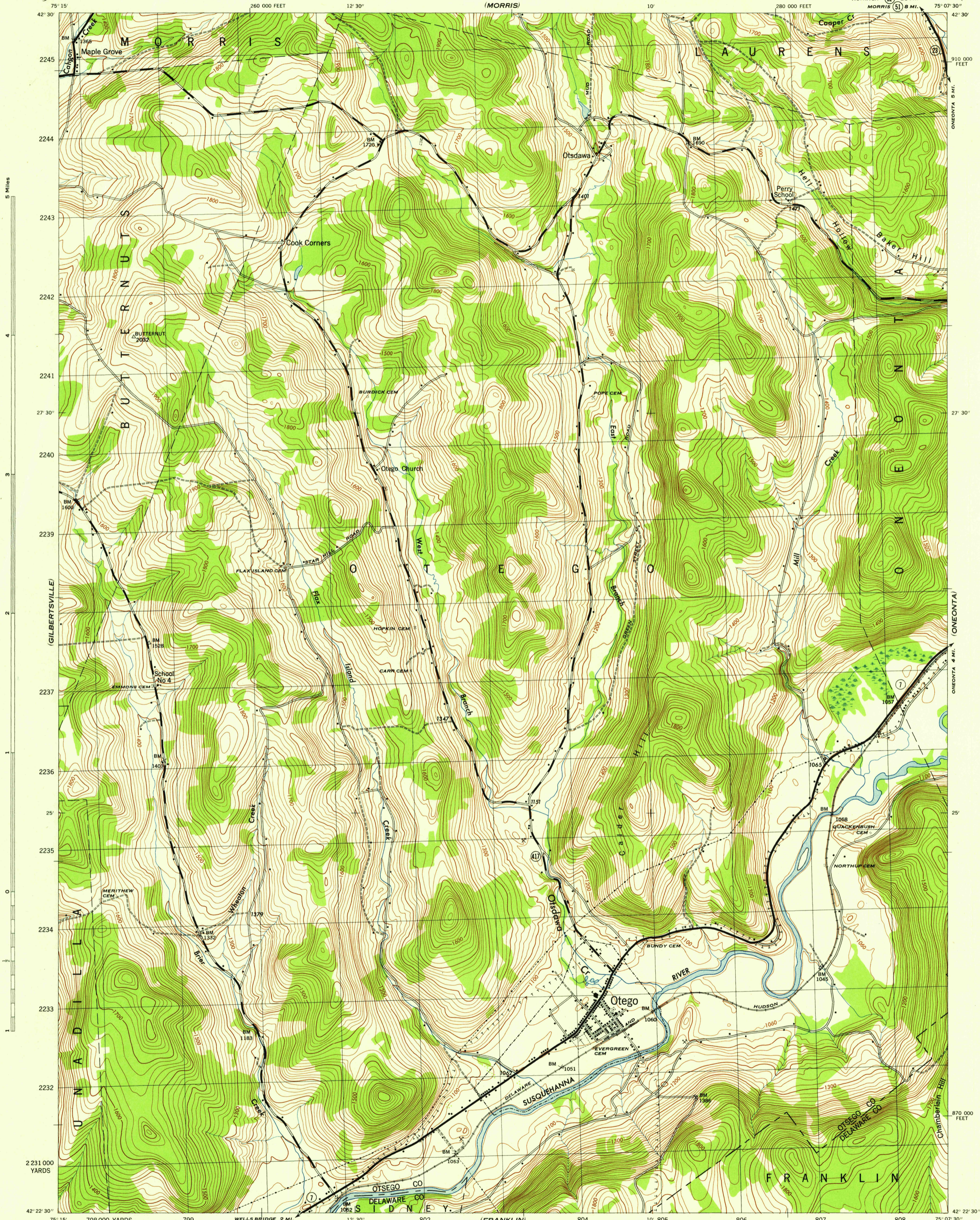
(NEW BERLIN SOUTH)

NEW YORK  
SCALE 1:31,680

WAR DEPARTMENT  
CORPS OF ENGINEERS, U. S. ARMY

OTEGO QUADRANGLE  
7 1/2-MINUTE SERIES

(MT. VISION)



5 Miles  
0  
1  
2  
3  
4  
5  
6  
7  
8  
9  
10  
11  
12  
13  
14  
15  
16  
17  
18  
19  
20  
21  
22  
23  
24  
25  
26  
27  
28  
29  
30  
31  
32  
33  
34  
35  
36  
37  
38  
39  
40  
41  
42

Mapped by Tennessee Valley Authority under direction of the Chief of Engineers, U. S. Army, 1943.  
Control by USCGS, USGS, and TVA.  
Topography by U. S. Geological Survey and Tennessee Valley Authority by Stereophotogrammetric methods (Multiplex).  
Field completion surveys by TVA.  
Wide-angle photography for TVA, 1942.  
Polyconic projection, 1927 North American datum.

**ROAD CLASSIFICATION**  
1943  
Dependable hard-surface, heavy-duty road. U. S. Route 20  
Low-surface graded, dry weather road.  
Secondary, hard-surface, all-weather road. State Route 7  
Dirt road. 3 LANE 2 LANE  
More than two lanes indicated by note along road with tick at point of change.

Scale 1:31,680  
1 000 500 0 1000 2000 Yards  
1 Mile

CONTOUR INTERVAL 20 FEET  
DATUM IS MEAN SEA LEVEL

ONE THOUSAND YARD GRID COMPUTED FROM "GRID SYSTEM FOR PROGRESSIVE MAPS IN THE U. S." ZONE A, U. S. C. & G. S. SPECIAL PUBLICATION NO. 59. THE LAST THREE DIGITS OF THE GRID NUMBERS ARE OMITTED.  
TEN THOUSAND FOOT GRID BASED ON NEW YORK PLANE COORDINATE SYSTEM, EASTERN ZONE.  
NOTE: OFFICERS USING THIS MAP WILL MAKE NECESSARY CORRECTIONS AND ADJUSTMENTS WHICH COME TO THEIR ATTENTION AND MAIL DIRECT TO THE CHIEF OF ENGINEERS, WASHINGTON, D. C.

APPROXIMATE MEAN ANNUAL MAGNETIC CHANGE 'V' INCREASE

USGS  
Historical File  
Topographic Division

OTEGO, N. Y.  
N4222.5-W7507.5/7.5  
EDITION OF 1948

U. S. G. A.  
FILE COPY  
Inspection and Editing

(UNADILLA)

(TREADWELL)