

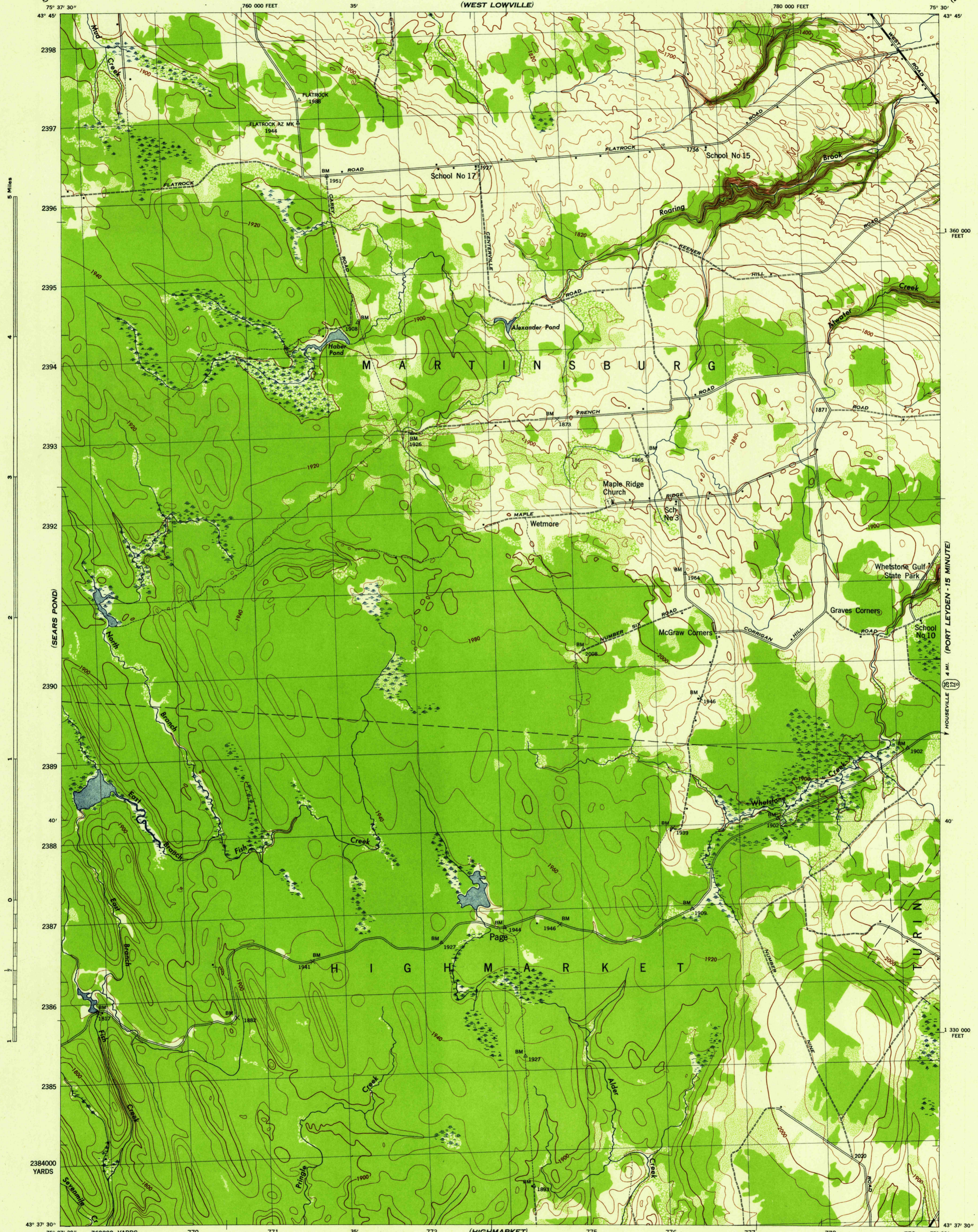
(NEW BOSTON)

NEW YORK 1:31,680
(LEWIS COUNTY)

WAR DEPARTMENT
CORPS OF ENGINEERS, U. S. ARMY

PAGE QUADRANGLE
7 1/2 - MINUTE SERIES

(LOWVILLE - 15 MINUTE)



(SEARS POND)

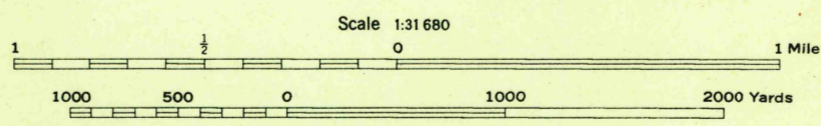
(NORTH OSCEOLA)

(PORT LEYDEN - 15 MINUTE)

(PORT LEYDEN - 15 MINUTE)

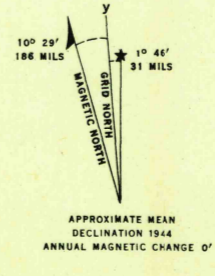
Mapped by Tennessee Valley Authority under direction of the Chief of Engineers, U. S. Army, 1943.
Control by USCGAS, USGS, and TVA.
Topography by U. S. Geological Survey and Tennessee Valley Authority by Stereophotogrammetric methods (Multiplex).
Field completion surveys by TVA, 1942.
Wide-angle photography by TVA, 1942.
Polyconic projection, 1927 North American datum.

ROAD CLASSIFICATION
1943
Dependable hard-surface, heavy duty road. ——— U. S. Route 20
Loose-surface graded, dry weather road. ——— State Route 7
Secondary hard-surface, all-weather road. ———
Dirt road. ———
More than two lanes indicated by note along road with tick at point of change. ——— LANE & LANE



CONTOUR INTERVAL 20 FEET
DATUM IS MEAN SEA LEVEL

ONE THOUSAND YARD GRID COMPUTED FROM GRID SYSTEM FOR PROGRESSIVE MAPS IN THE U. S. ZONE A, U. S. C. & G. S. SPECIAL PUBLICATION NO. 59
THE LAST THREE DIGITS OF THE GRID NUMBERS ARE OMITTED
TEN THOUSAND FOOT GRID BASED ON NEW YORK PLANE COORDINATE SYSTEM, CENTRAL ZONE
NOTE: OFFICERS USING THIS MAP WILL MAKE NECESSARY CORRECTIONS AND ADJUSTMENTS WHICH COME TO THEIR ATTENTION AND MAIL DIRECT TO THE CHIEF OF ENGINEERS, WASHINGTON, D. C."



REPRODUCED BY THE TENNESSEE VALLEY AUTHORITY
FIG. NO. 120152

WOODLAND CLASSIFICATION
Dense woodland
Dense brush
Scattered brush and trees
Orchard
Vieyard

PAGE, N. Y.
N4337.5-W7530/7.5
EDITION OF 1944

USGS
Historical File
Topographic Division

THIS MAP COMPLETES WITH THE NATIONAL STANDARD MAP ACCURACY REQUIREMENTS.