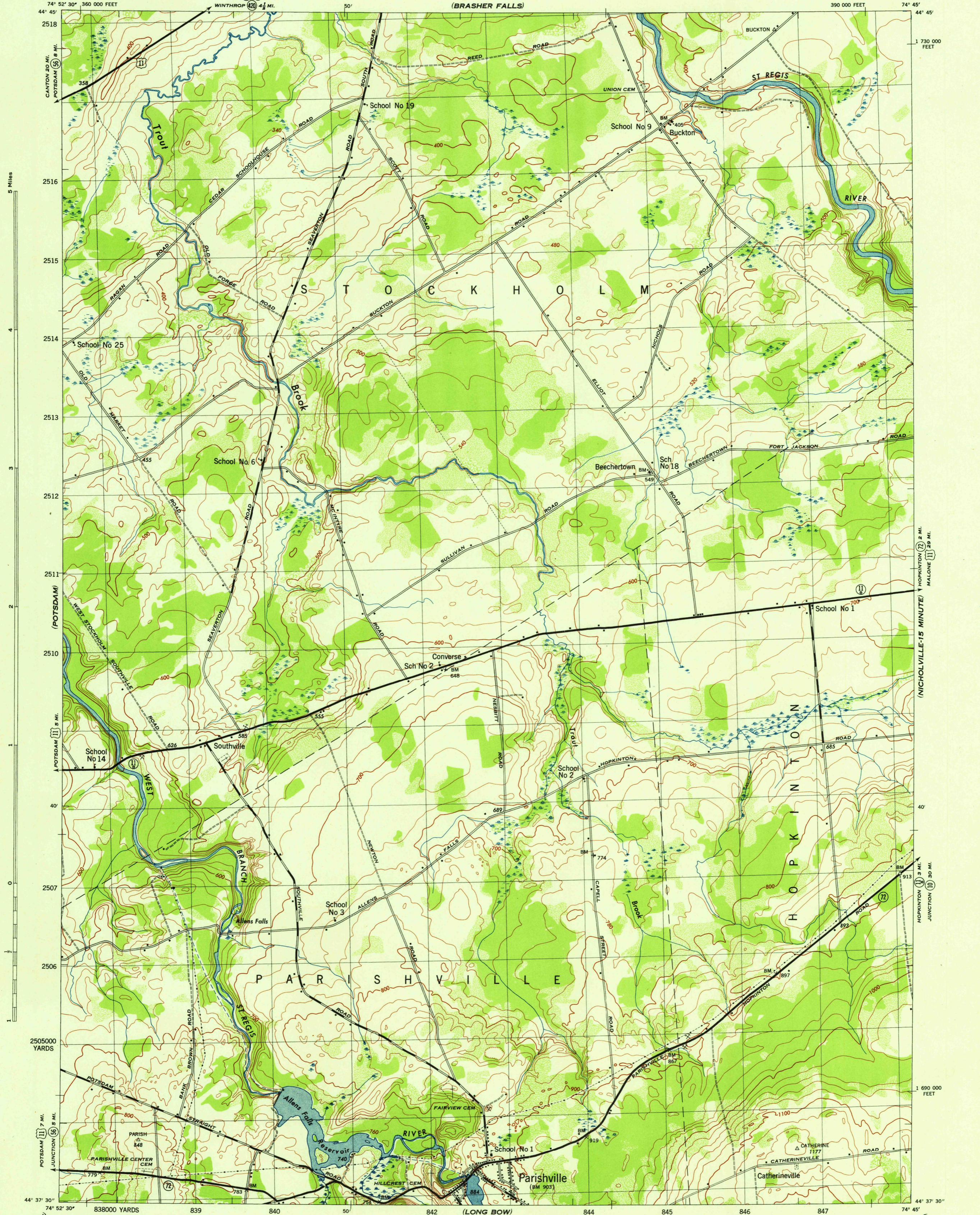


NEW YORK 1:31,680
(ST LAWRENCE COUNTY)

WAR DEPARTMENT
CORPS OF ENGINEERS, U. S. ARMY

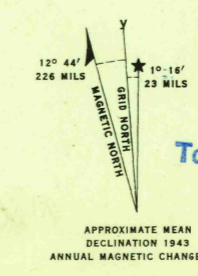
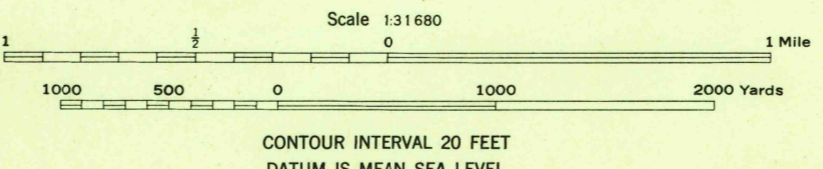
PARISHVILLE QUADRANGLE
7 1/2 - MINUTE SERIES



Map by Tennessee Valley Authority under direction of the Chief of Engineers, U. S. Army, 1943.
Control by USCGAS, USGS, and TVA.
Topography by U. S. Geological Survey and Tennessee Valley Authority by Stereophotogrammetric methods (Multiplex).
Field completion surveys by TVA.
Wide-angle photography for TVA, 1942.
Polyconic projection, 1927 North American datum.

ROAD CLASSIFICATION
1943
Dependable hard-surface, heavy-duty road. U. S. Route
Loose-surface graded, dry weather road. U. S. Route
Secondary, hard-surface, all-weather road. State Route
Dirt road.
More than two lanes indicated by note along road with tick at point of change. 3 LANE 4 LANE

THIS MAP COMPLIES WITH THE NATIONAL STANDARD MAP ACCURACY REQUIREMENTS.



REPRODUCED BY THE TENNESSEE VALLEY AUTHORITY
AWS NO. 120710

WOODLAND CLASSIFICATION
Dense woodland
Dense brush
Scattered brush and trees
Orchard
Vineyard

USGS
Historical File
Topographic Division

PARISHVILLE, N. Y.
N4437.5-W7545/7.5
EDITION OF 1943

ONE THOUSAND YARD GRID COMPUTED FROM "GRID SYSTEM FOR PROGRESSIVE MAPS IN THE U. S. ZONE A, U. S. C. & G. S. SPECIAL PUBLICATION NO. 89" THE LAST THREE DIGITS OF THE GRID NUMBERS ARE OMITTED.
TEN THOUSAND FOOT GRID BASED ON NEW YORK PLANE COORDINATE SYSTEM, EASTERN ZONE.
NOTE: OFFICERS USING THIS MAP WILL MARK HEREON CORRECTING AND ADJUSTING BRICK ONE TO THEIR ATTENTION AND MAIL DIRECT TO "THE CHIEF OF ENGINEERS, WASHINGTON, D. C."