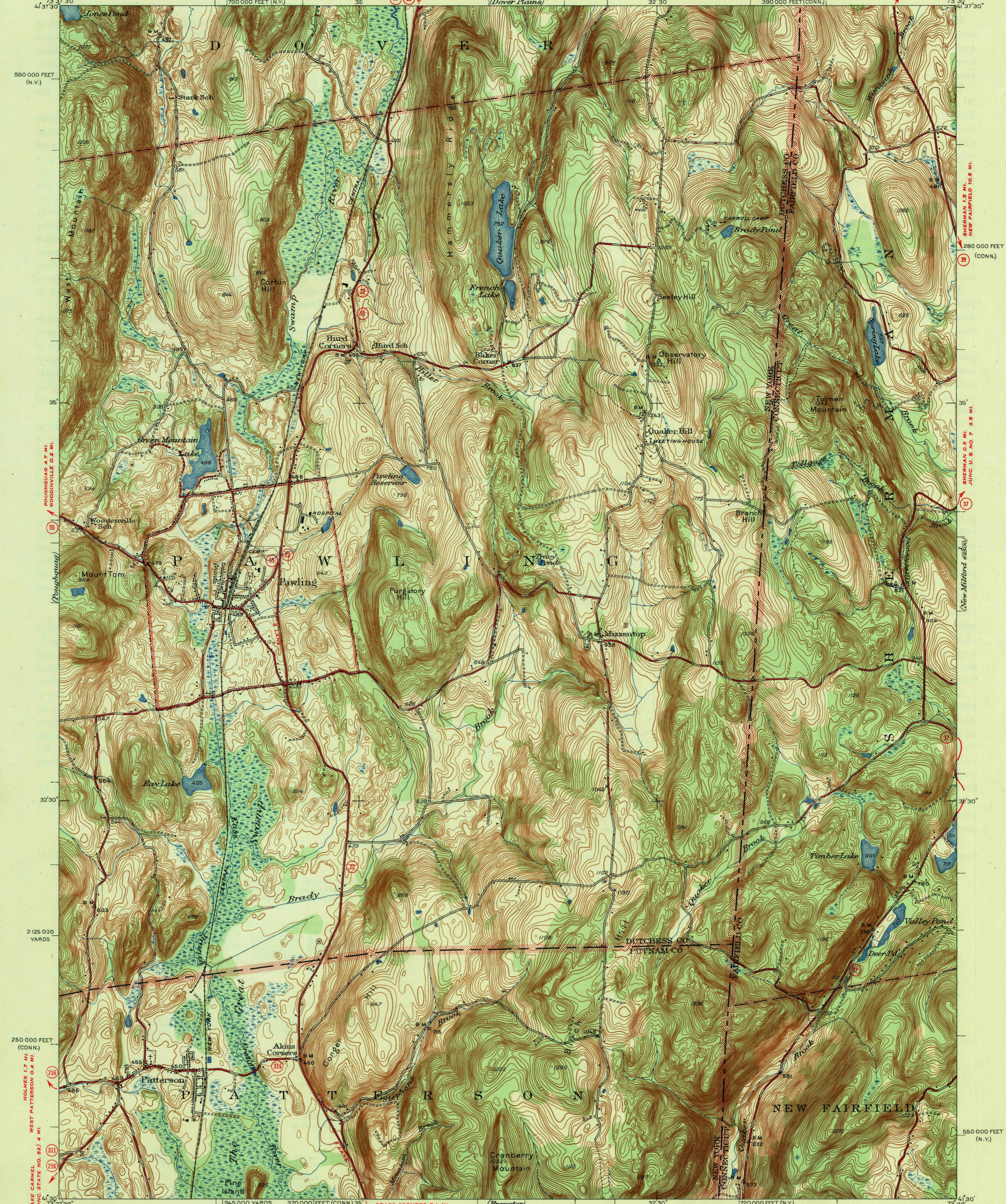


U. S. G. S.  
**FILE COPY**  
Inspection and Editing.

JUNC. STATE NO. 55 1.1 MI. (38)  
NEW YORK-CONNECTICUT  
PAWLING QUADRANGLE  
7 1/2-MINUTE SERIES  
(New Milford 62800)

UNITED STATES  
DEPARTMENT OF THE INTERIOR  
GEOLOGICAL SURVEY  
WAR DEPARTMENT  
CORPS OF ENGINEERS, U. S. ARMY  
(Dover Plains)



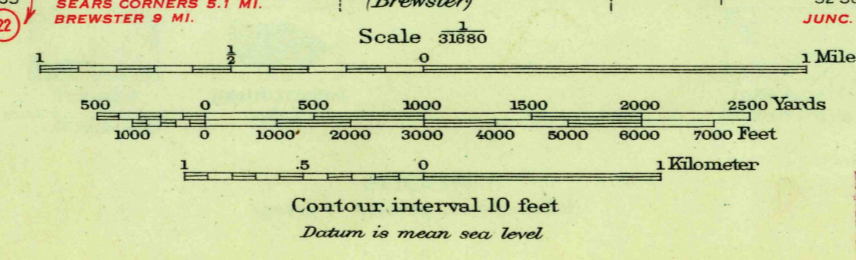
Mapped by the Geological Survey  
1944-1945

**ROAD CLASSIFICATION**  
1947  
Dependable hard-surface road  
heavy-duty road  
Secondary hard-surface road  
all-weather road  
More than two lanes indicated along road with tick at point of change

Dry weather roads  
Loose-surface, graded  
Unsurfaced, graded  
Dirt road

U. S. Route (15)  
State Route (26)

APPROXIMATE MEAN DECLINATION, 1945



USGS  
Historical File  
Topographic Division

U. S. G. S.  
**FILE COPY**  
Inspection and Editing.

Polyconic projection, 1927 North American datum  
5000 yard grid based on U.S. zone system, A  
10000 foot grids based on New York (East) and  
Connecticut rectangular coordinate systems

PAWLING, N.Y.-CONN  
Edition of 1947  
N4130-W7330/75

4275