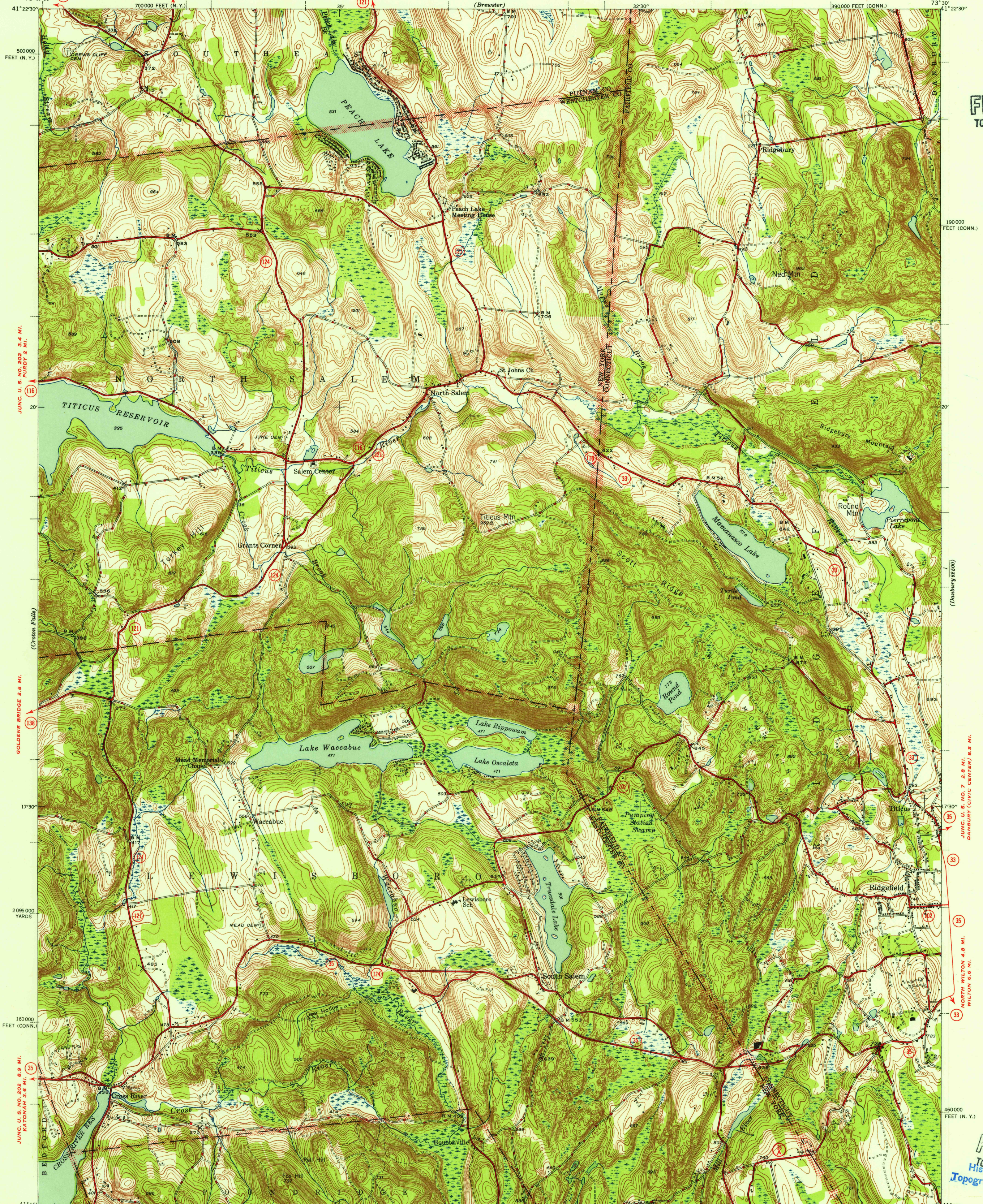


U.S.G.S.
 FILE COPY
 TOPOGRAPHIC DIVISION



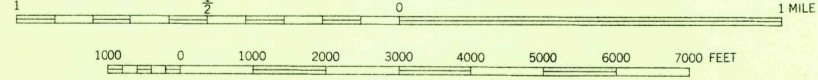
Mapped by the Geological Survey
 (121) 1943
 BEDFORD (JUNC. STATE NO. 22) 3.9 MI.
 VALHALLA 17 MI.

(Stamford 62500) (124)
 POUNDRIDGE 3 MI.
 SCALE 1:31680
 JUNC. MERRITT PARKWAY 9.8 MI.

VISTA 3.5 MI. (123)
 NORWALK 12 MI.

Polyconic projection. 1927 North American datum
 5000 yard grid based on U. S. zone system, A
 10000 foot grids based on Connecticut and New York (East)
 rectangular coordinate systems

APPROXIMATE MEAN
 DECLINATION, 1949



Contour interval 10 feet
 Datum is mean sea level

ROAD CLASSIFICATION
 1945

Dependable hard-surface	Dry weather roads
heavy-duty road	Loose-surface graded
Secondary hard-surface	Unsurfaced, graded
all weather road	Dirt road

More than two lanes indicated along road with tick at point of change

U. S. Route (15) PEACH LAKE, N. Y.-CONN.
 Edition of 1945

N4115-W7330/7.5

U.S.G.S.
 FILE COPY
 TOPOGRAPHIC DIVISION

JUL 26 1955

2010