

(MARGARETVILLE 1:62,500)

NEW YORK 1:31,680

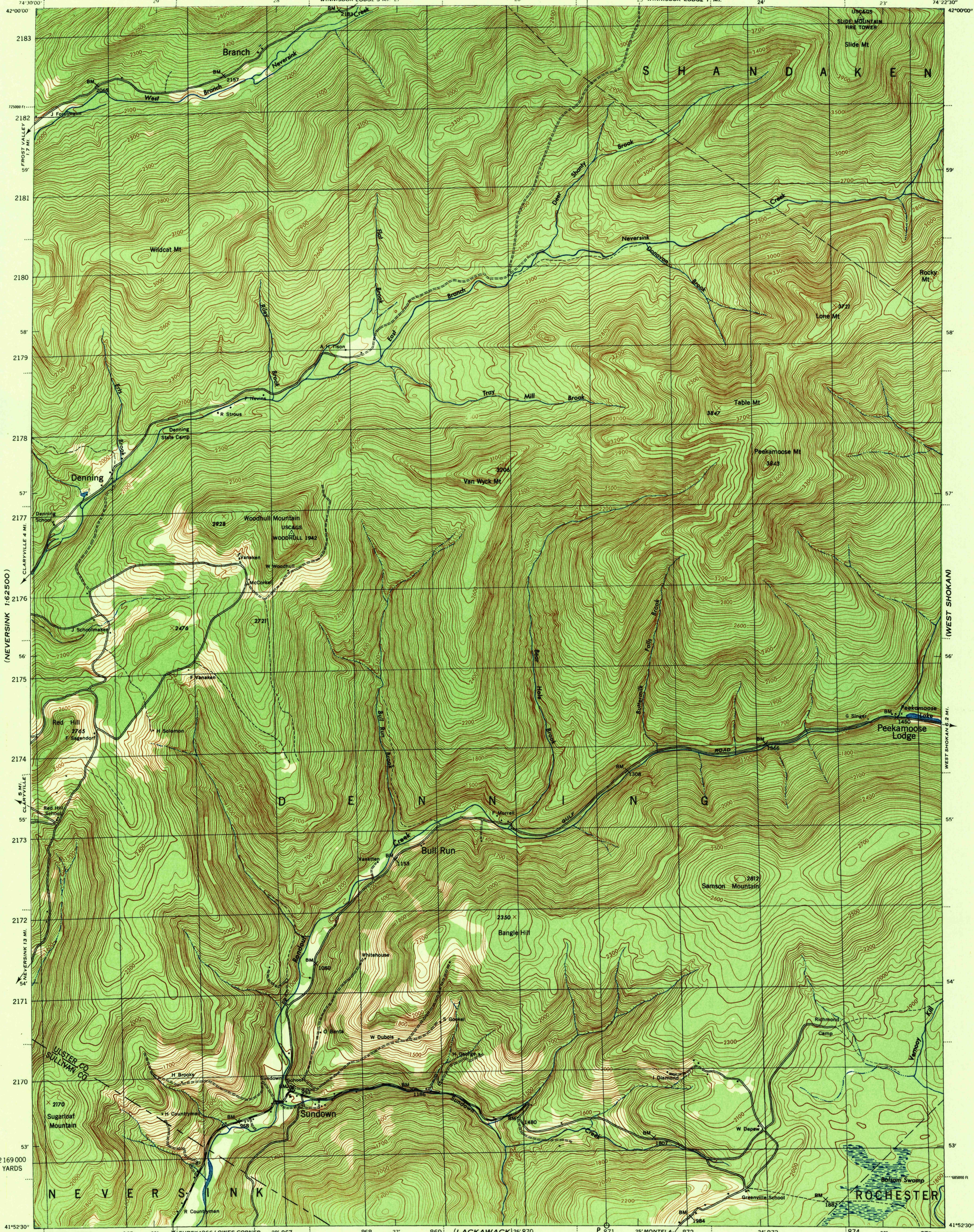
WAR DEPARTMENT
CORPS OF ENGINEERS, U. S. ARMY

FIRST EDITION - AMS 1

PEEKAMOOSE MT. QUADRANGLE

(PHOENICIA 1:62,500)

7.5 MINUTE SERIES



ROAD CLASSIFICATION 1943
Dependable hard surface
Seasonal hard surface
Secondary hard surface
all weather road
More than two lanes indicated by note along road with tick at point of change
Loose surface graded
dry weather road
U. S. Route
State Route
3 LANE 1 - 2 LANE

Scale 1:31,680
1000 500 0 1000 2000 Yards
CONTOUR INTERVAL 20 FEET
DATUM IS MEAN SEA LEVEL
THOUSAND YARD GRID COMPUTED FROM GRID SYSTEM FOR PROGRESSIVE MAPS
IN THE U. S. - ZONE 'A' - U. S. C. & G. S. SPECIAL PUBLICATION NO. 59
THE LAST THREE DIGITS OF THE GRID NUMBERS ARE OMITTED
NEW YORK STATE GRID ZONE EAST, IS INDICATED BY DOTTED
TICKS OUTSIDE THE REAR LINE AT 5,000 FT. INTERVALS
NOTE: OFFICERS USING THIS MAP WILL WANT FREQUENT CORRECTIONS AND ADDITIONS WHICH COME
TO THEIR ATTENTION AND MAIL DIRECT TO: THE CHIEF OF ENGINEERS, WASHINGTON, D. C.

USCS
Historical File
Topographic Division
PEEKAMOOSE MT., N. Y.
N4152.5-W7422.5/7.5
APPROXIMATE MEAN DECLINATION 1942
FOR CENTER OF SHEET
ANNUAL MAGNETIC CHANGE 0'
To determine magnetic north line, connect the
pivot point "P" on the south edge of the map
with the value of the angle between grid
and magnetic north, as plotted on the degree
scale of the north edge of the map.