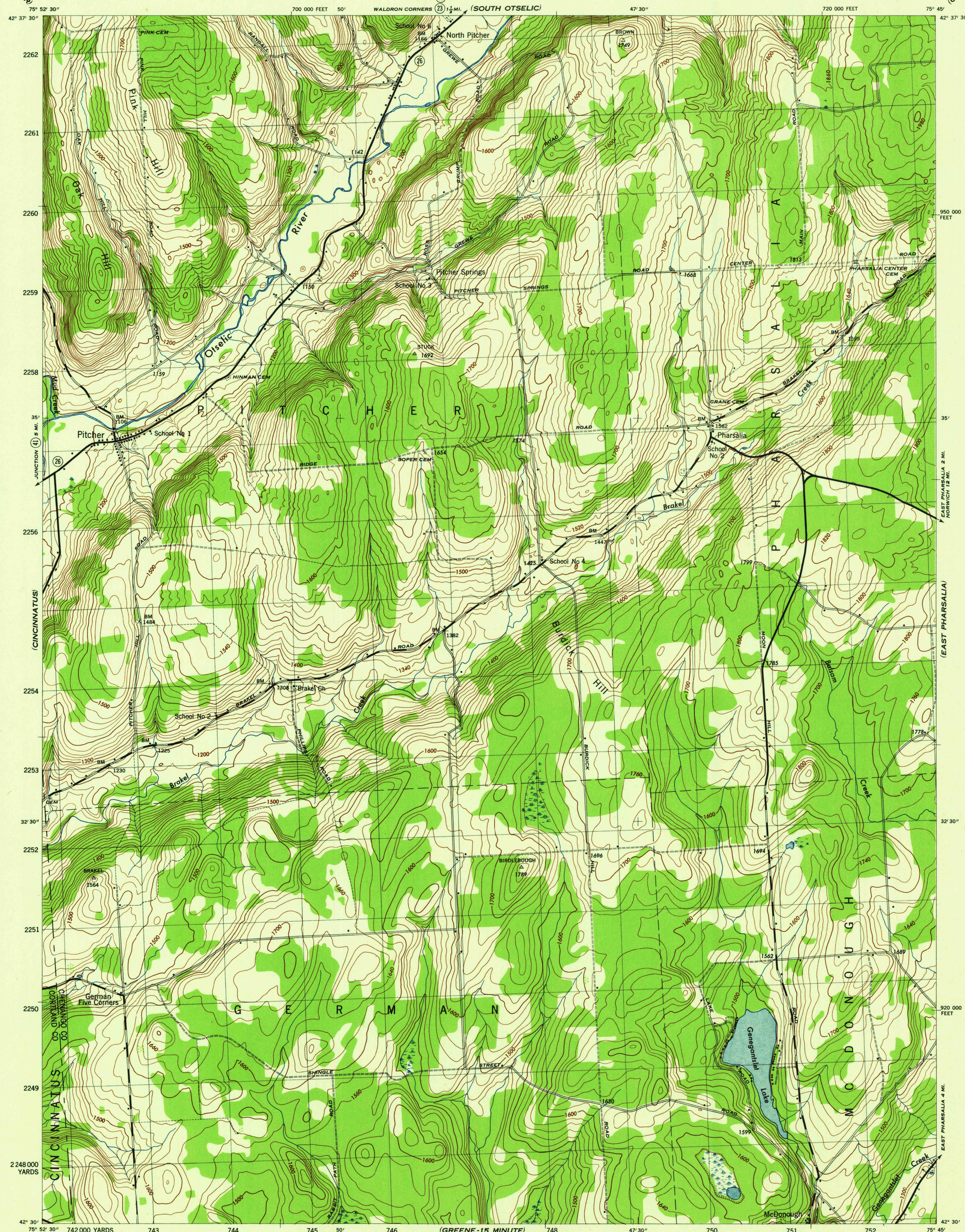


NEW YORK  
SCALE 1:31,680

WAR DEPARTMENT  
CORPS OF ENGINEERS, U. S. ARMY

PITCHER QUADRANGLE  
7½-MINUTE SERIES

(OTSSELIC)



Map by Tennessee Valley Authority under direction of the  
Chief of Engineers, U. S. Army, 1943.  
Control by USCGS, USGS, USGS, and TVA.  
Topography by U. S. Geological Survey and Tennessee Valley Authority  
by Stereophotogrammetric methods (Multiplex).  
Field completion surveys by TVA.  
Wide-angle photography for TVA, 1942.  
Polyconic projection. 1927 North American Datum.

ROAD CLASSIFICATION  
1943  
Dependable hard-surface, heavy-duty road. ——— U. S. Route 20  
Secondary, hard-surface, all-weather road. ——— State Route 7  
More than two lanes indicated by note along road with tick at point of change. 3 LANE 1-2 LANE

Scale 1:31,680  
1 0 1000 2000 Yards  
CONTOUR INTERVAL 20 FEET  
DATUM IS MEAN SEA LEVEL

ONE THOUSAND YARD GRID COMPUTED FROM "GRID SYSTEM FOR PROGRESSIVE MAPS"  
IN THE U. S. ZONE A, U. S. G. S. SPECIAL PUBLICATION NO. 89  
THE LAST THREE DIGITS OF THE GRID NUMBERS ARE OMITTED  
TEN THOUSAND FOOT GRID BASED ON NEW YORK PLANE COORDINATE SYSTEM, CENTRAL ZONE  
NOTE: OFFICERS USING THIS MAP WILL HAVE HAD CORRECTIONS AND REVISIONS MADE TO  
THEIR ATTENTION AND MAIL DIRECT TO "THE CHIEF OF ENGINEERS, WASHINGTON, D. C."

APPROXIMATE MEAN  
DECLINATION 1944  
ANNUAL MAGNETIC CHANGE 0'

USGS  
Historical File  
Topographic Division

PITCHER, N. Y.  
N4230-W7545/7.5  
EDITION OF 1944