

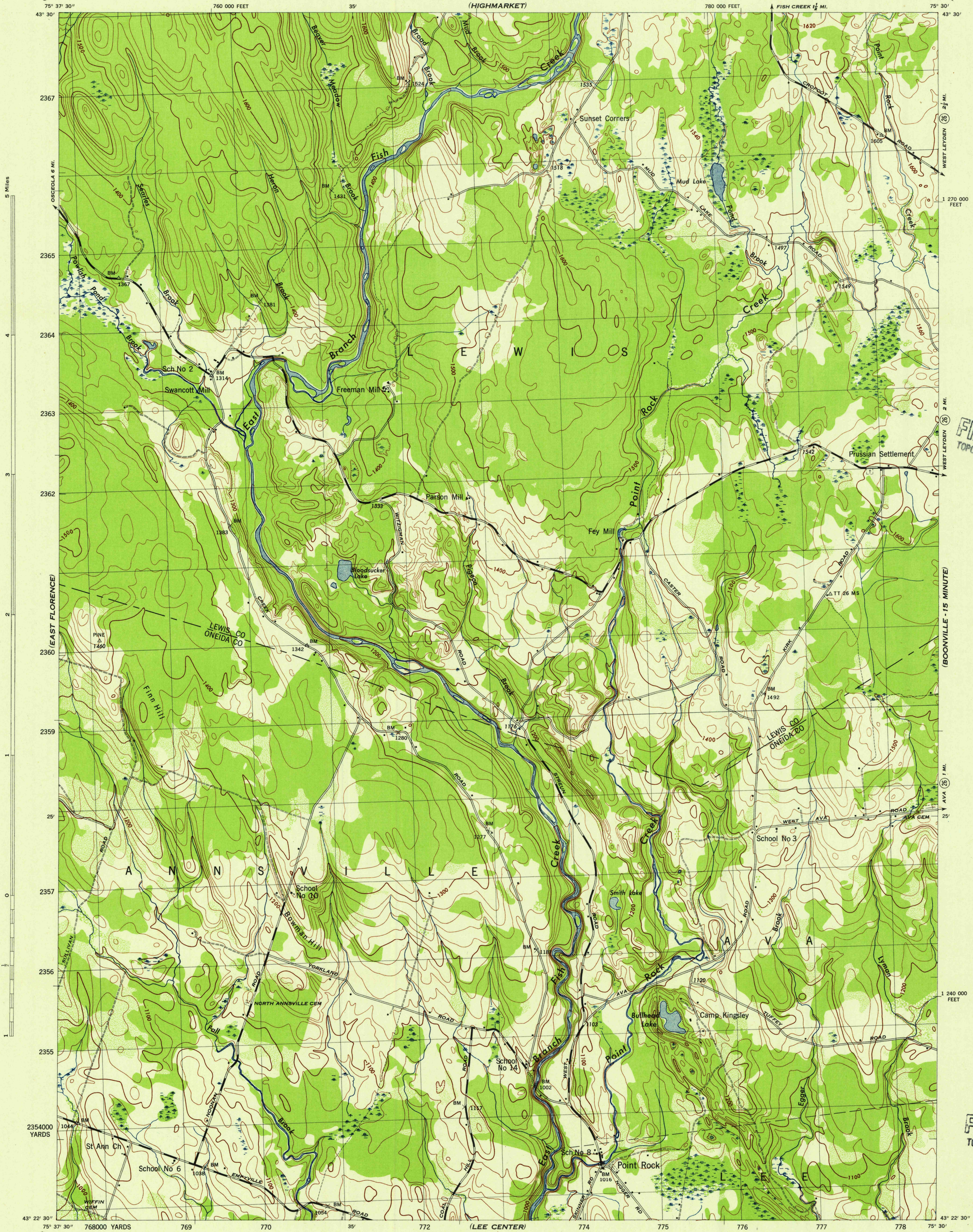
(NORTH OSCEOLA)

NEW YORK 1:31,680

WAR DEPARTMENT
CORPS OF ENGINEERS, U. S. ARMY

POINT ROCK QUADRANGLE
7 1/2 - MINUTE SERIES

(PORT LEYDEN - 15 MINUTE)



U.S.G.S.
FILE COPY
TOPOGRAPHIC DIVISION

U.S.G.S.
FILE COPY
TOPOGRAPHIC DIVISION

Maped by Tennessee Valley Authority under direction of the Chief of Engineers, U. S. Army, 1943.
Control by USGS, USGS, and TVA.
Topography by U. S. Geological Survey and Tennessee Valley Authority by Stereophotogrammetric methods (Multiplex).
Field completion surveys by TVA.
Wide-angle photography for TVA, 1942.
Polyconic projection, 1927 North American Datum.

ROAD CLASSIFICATION
1943

Dependable hard-surface, heavy-duty road. ——— U. S. Route (20)
Loose-surface graded, dry weather road. ——— State Route (7)
Secondary hard-surface, all-weather road. ———
Dirt road. ———
More than two lanes indicated by note along road with tick at point of change. **LANE | LANE**

Scale 1:31,680

1 Mile
1000 500 0 1000 2000 Yards

CONTOUR INTERVAL 20 FEET
DATUM IS MEAN SEA LEVEL

ONE THOUSAND YARD GRID COMPUTED FROM "GRID SYSTEM FOR PROGRESSIVE MAPS IN THE U. S. ZONE" U. S. G. & S. SPECIAL PUBLICATION NO. 59 THE LAST THREE DIGITS OF THE GRID NUMBERS ARE OMITTED
TEN THOUSAND FOOT GRID BASED ON NEW YORK PLANE COORDINATE SYSTEM, CENTRAL ZONE
NOTE: OFFICERS USING THIS MAP WILL MAKE NECESSARY CORRECTIONS AND ADJUSTMENTS WHICH COME TO THEIR ATTENTION AND WILL DIRECT TO THE CHIEF OF ENGINEERS, WASHINGTON, D. C.

USGS
Historical File
Topographic Division

WOODLAND CLASSIFICATION

Dense woodland
Dense brush
Scattered brush and trees
Orchard
Vineyard

APPROXIMATE MEAN DECLINATION 1944
ANNUAL MAGNETIC CHANGE 0'

POINT ROCK, N. Y.
N4322.5-W7530/7.5
EDITION OF 1944

THIS MAP COMPLIES WITH THE NATIONAL STANDARD MAP ACCURACY REQUIREMENTS.