

(WHITE LAKE)
1:62,500

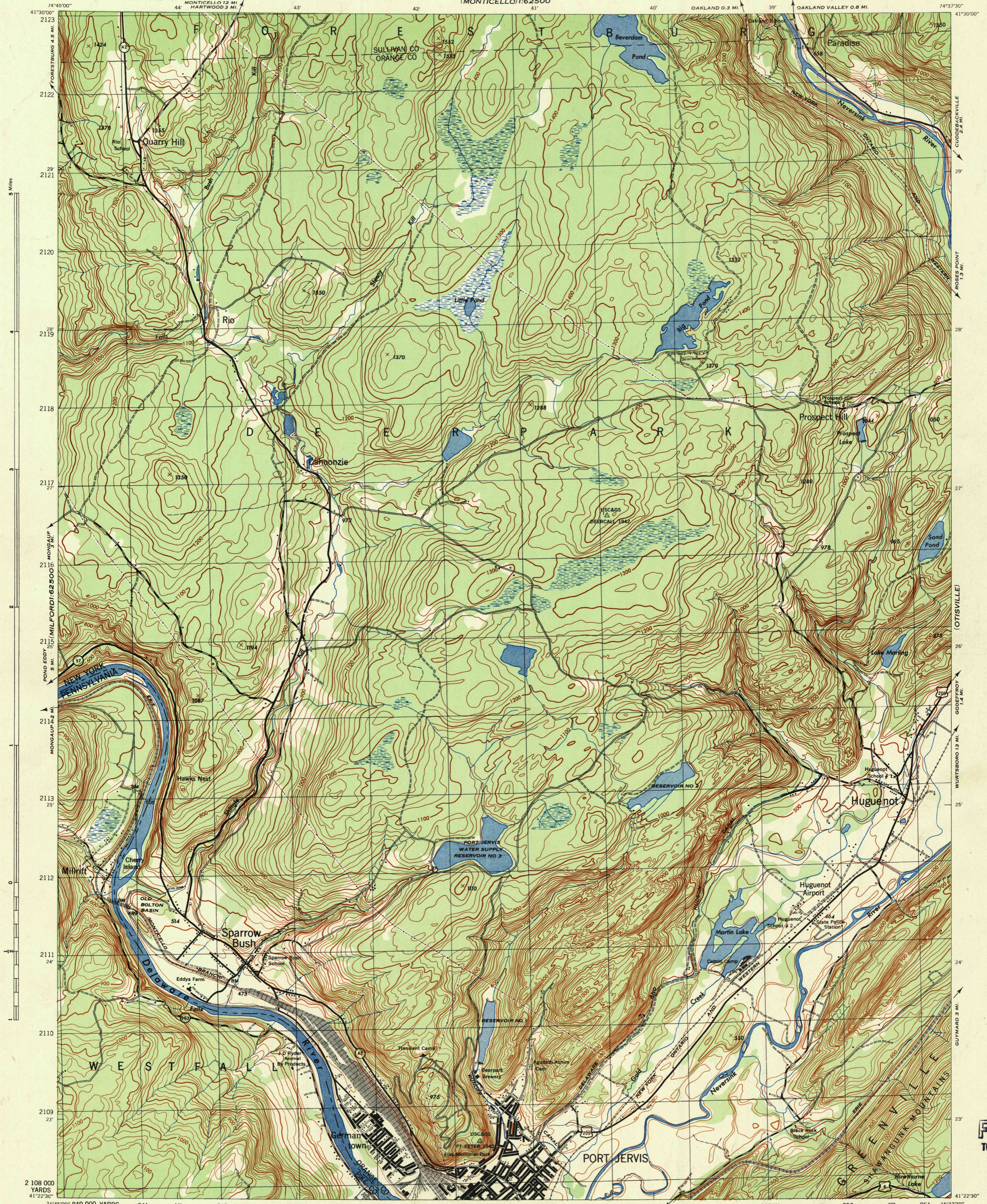
NEW YORK - PENNSYLVANIA
PORT JERVIS NORTH QUADRANGLE
GRID ZONE "A"

WAR DEPARTMENT
CORPS OF ENGINEERS, U. S. ARMY
(MONTICELLO) 1:62,500

FIRST EDITION - AMS 1

NEW YORK - PENNSYLVANIA
PORT JERVIS NORTH QUADRANGLE
GRID ZONE "A"

(MONTICELLO)
1:62,500



(MILFORD)
1:62,500

2 108 000 YARDS
41° 22' 30"

74° 45' 00" 840 000 YARDS
841 44' 842 43' 843 844 42' 845 846 41' 847 40' 848 849 39' 850 38' 851 74° 37' 30"

First Edition 1943
Prepared under the direction of the Chief of Engineers,
U. S. Army, 1942.
Compiled by Fairchild Aerial Surveys, Inc.,
Los Angeles, California.
Topography by Fairchild Aerial Surveys, Inc.,
by Stereophotogrammetric Process.
Control by U. S. Coast and Geodetic Survey,
Aerial Photography by Fairchild Aerial Surveys, Inc., 1942.
Polyconic Projection, North American Datum 1927.

ROAD CLASSIFICATION 1943
Dependable hard surface, heavy duty road. U.S. Route 160
Loose surface graded, dry weather road.
Secondary, hard surface, all-weather road. State Route 30
Dirt road. 3 LANE 1 1/4 LANE
More than two lanes indicated by note along road with tick at point of change.

(PORT JERVIS SOUTH)
Scale 1:31,680

CONTOUR INTERVAL 20 FEET
DATUM IS MEAN SEA LEVEL
THOUSAND YARD GRID COMPUTED FROM GRID SYSTEM FOR PROGRESSIVE MAPS
IN THE U. S. ZONE A - U. S. C. & G. S. SPECIAL PUBLICATION NO. 59
THE LAST THREE DIGITS OF THE GRID NUMBERS ARE OMITTED
NOTE: OFFICERS USING THIS MAP WILL MARK HEREON CORRECTIONS AND ADDITIONS WHICH COME
TO THEIR ATTENTION AND MAIL DIRECT TO THE CHIEF OF ENGINEERS, WASHINGTON, D. C.

1 1/2 0 1000 2000 Yards
1 Mile
APPROXIMATE MEAN DECLINATION 1943
ANNUAL MAGNETIC CHANGE 0

USGS
FILE CO
TOPOGRAPHIC DIV

USGS
Historical File
Topographic Division

PORT JERVIS NORTH,
N. Y. - PA.
N4122.5-W7437.5/7.5

USGS
FILE CO
TOPOGRAPHIC DIV

USGS
Historical File
Topographic Division

PORT JERVIS NORTH,
N. Y. - PA.
N4122.5-W7437.5/7.5

(LUNONVILLE)