

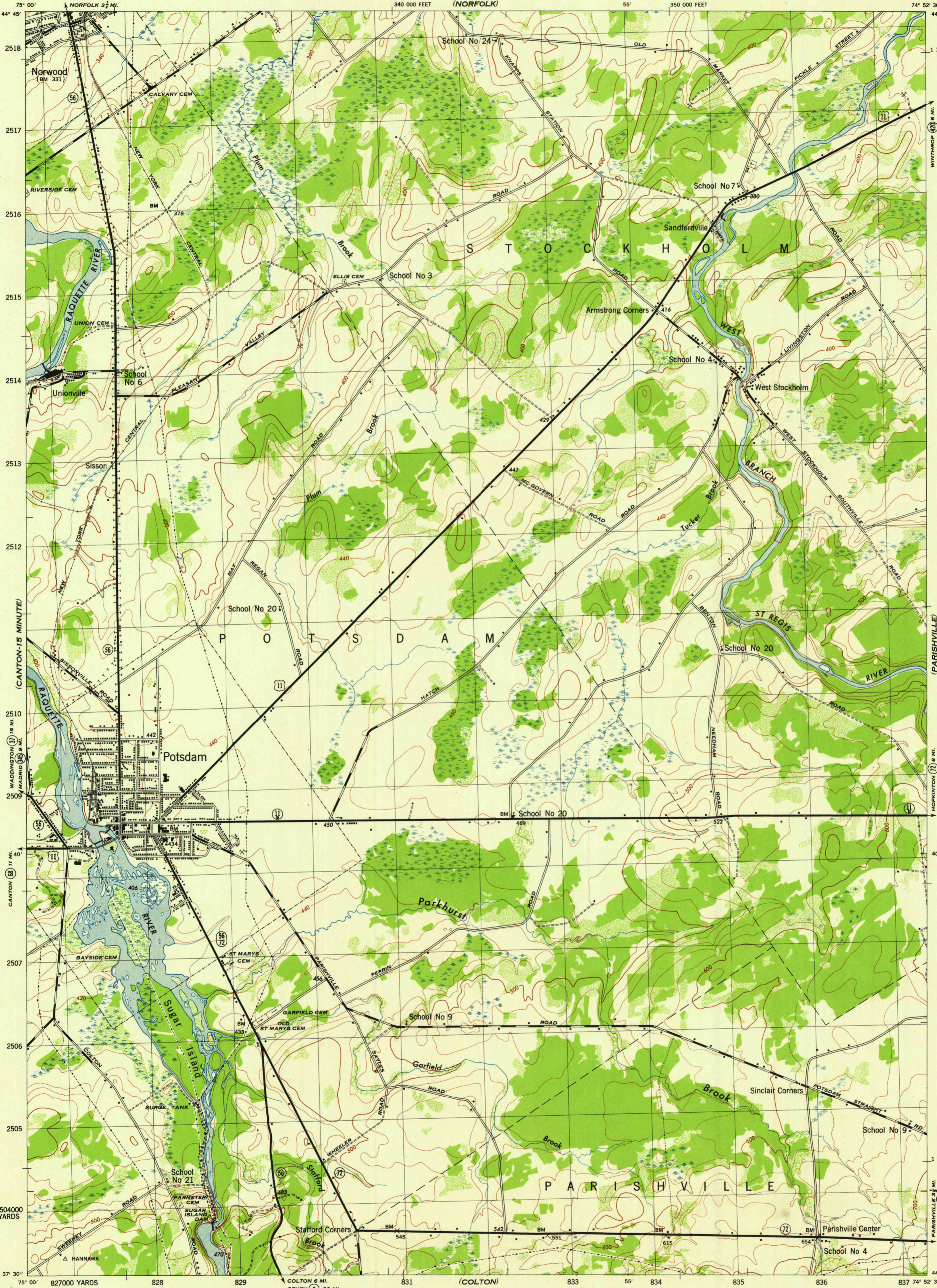
NEW YORK 1:31,680
(ST LAWRENCE COUNTY)

WAR DEPARTMENT
CORPS OF ENGINEERS, U. S. ARMY

POTSDAM QUADRANGLE
7 1/2 - MINUTE SERIES

(CHASE MILLS)
5 Miles
4
3
2
1
0
1
2
3
4
5 Miles
(CANTON-15 MINUTE)
WADDINGTON (3) 19 MI.
MADRID (3) 9 MI.
CANTON (8) 11 MI.
2504000 YARDS
(CANTON-15 MINUTE)

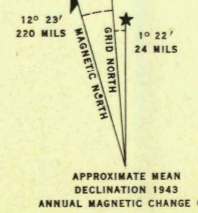
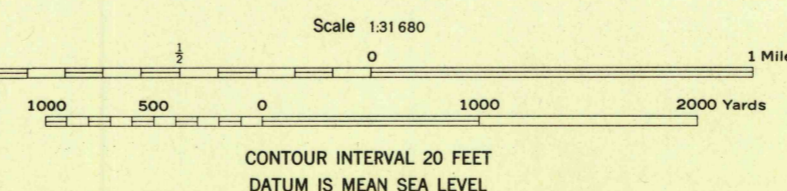
(BRASHER FALLS)
1 730 000 FEET
1 690 000 FEET
(PARISHVILLE)
WADSWORTH (7) 8 MI.
MALONE (11) 38 MI.
(PARISHVILLE)
WADSWORTH (7) 8 MI.
MALONE (11) 38 MI.
(LONG BOW)



Maped by Tennessee Valley Authority under direction of the Chief of Engineers, U. S. Army, 1943.
Control by USGS, USGS, and TVA.
Topography by U. S. Geological Survey and Tennessee Valley Authority by Stereophotogrammetric methods (Multiplex).
Field completion surveys by TVA.
Wide-angle photography by TVA, 1942.
Polyconic projection. 1927 North American datum.

ROAD CLASSIFICATION
1943
Dependable hard-surface, heavy-duty road. ——— U. S. Route (85)
Loose-surface graded, dry weather road. ——— State Route (72)
Secondary, hard-surface, all-weather road. ———
Dirt road. ———
More than two lanes indicated by note along road with tick at point of change. ——— 3 LANE (4 LANE)

THIS MAP COMPLIES WITH THE NATIONAL STANDARD MAP ACCURACY REQUIREMENTS.



REPRODUCED BY THE TENNESSEE VALLEY AUTHORITY
AKE NO. 120111

WOODLAND CLASSIFICATION

- Dense woodland
- Dense brush
- Scattered brush and trees
- Orchard
- Vineyard

POTSDAM, N. Y.
N4437.5-W7452.5/7.5
EDITION OF 1943

ONE THOUSAND YARD GRID COMPUTED FROM "GRID SYSTEM FOR PROGRESSIVE MAPS IN THE U. S. ZONE A, U. S. G. S. SPECIAL PUBLICATION NO. 98"
THE LAST THREE DIGITS OF THE GRID NUMBERS ARE OMITTED
TEN THOUSAND FOOT GRID BASED ON NEW YORK PLANE COORDINATE SYSTEM, EASTERN ZONE
NOTE: OFFICERS USING THIS MAP WILL MAKE BENCH CORRECTIONS AND ADJUSTIONS WHICH COME TO THEIR ATTENTION AND MAIL DIRECT TO "THE CHIEF OF ENGINEERS, WASHINGTON, D. C."