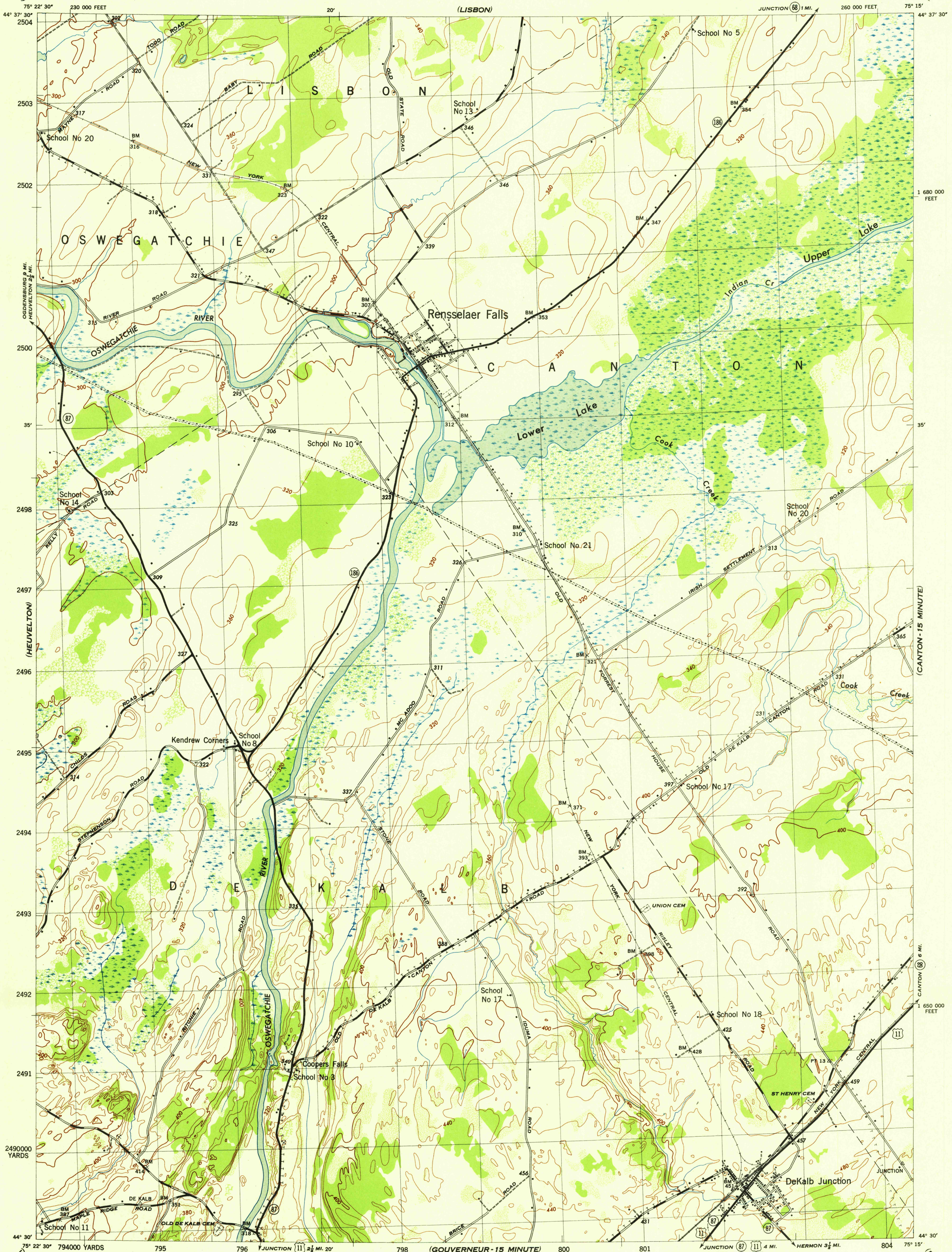


NEW YORK 1:31,680
(ST LAWRENCE COUNTY)

WAR DEPARTMENT
CORPS OF ENGINEERS, U. S. ARMY

RENSSELAER FALLS QUADRANGLE
7 1/2 - MINUTE SERIES



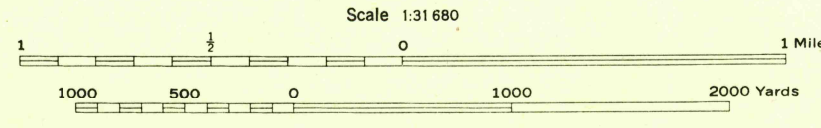
Mapped by Tennessee Valley Authority under direction of the
Chief of Engineers, U. S. Army, 1942.
Control by USCGS, USGS, and TVA.
Topography by Tennessee Valley Authority plane-table surveys.
Culture and drainage in part compiled from aerial photographs.
Wide-angle photography for TVA, 1942.
Polyconic projection, 1927 North American datum.

ROAD CLASSIFICATION

Dependable hard-surface, heavy-duty road. ——— U. S. Route 11
Loose-surface graded, dry-weather road. ——— State Route 87
Secondary, hard-surface, all-weather road. ——— 3 LANE 4 LANE
Dirt road. ———

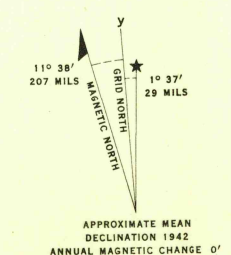
More than two lanes indicated by note along road with tick at point of change.

THIS MAP COMPLIES WITH THE NATIONAL STANDARD MAP ACCURACY REQUIREMENTS.



CONTOUR INTERVAL 20 FEET
DATUM IS MEAN SEA LEVEL

ONE THOUSAND YARD GRID COMPUTED FROM GRID SYSTEM FOR PROGRESSIVE MAPS
IN THE U. S. ZONE A, U. S. C. & G. S. SPECIAL PUBLICATION NO. 59
THE LAST THREE DIGITS OF THE GRID NUMBERS ARE OMITTED.
TEN THOUSAND FOOT GRID BASED ON NEW YORK PLANE COORDINATE SYSTEM, EASTERN ZONE
NOTE: OFFICIAL USE ONLY. THIS MAP WILL HAVE VERTICAL CORRECTIONS AND MAGNETIC DECLINATION
TO THEIR ATTENTION AND MAIL DIRECT TO THE CHIEF OF ENGINEERS, WASHINGTON, D. C.



WOODLAND CLASSIFICATION

Dense woodland
Dense brush
Scattered brush and trees
Orchard
Vineyard

RENSSELAER FALLS, N. Y.
N4430W7515/7.5
EDITION OF 1942

USGS
Historical File
Topographic Division