

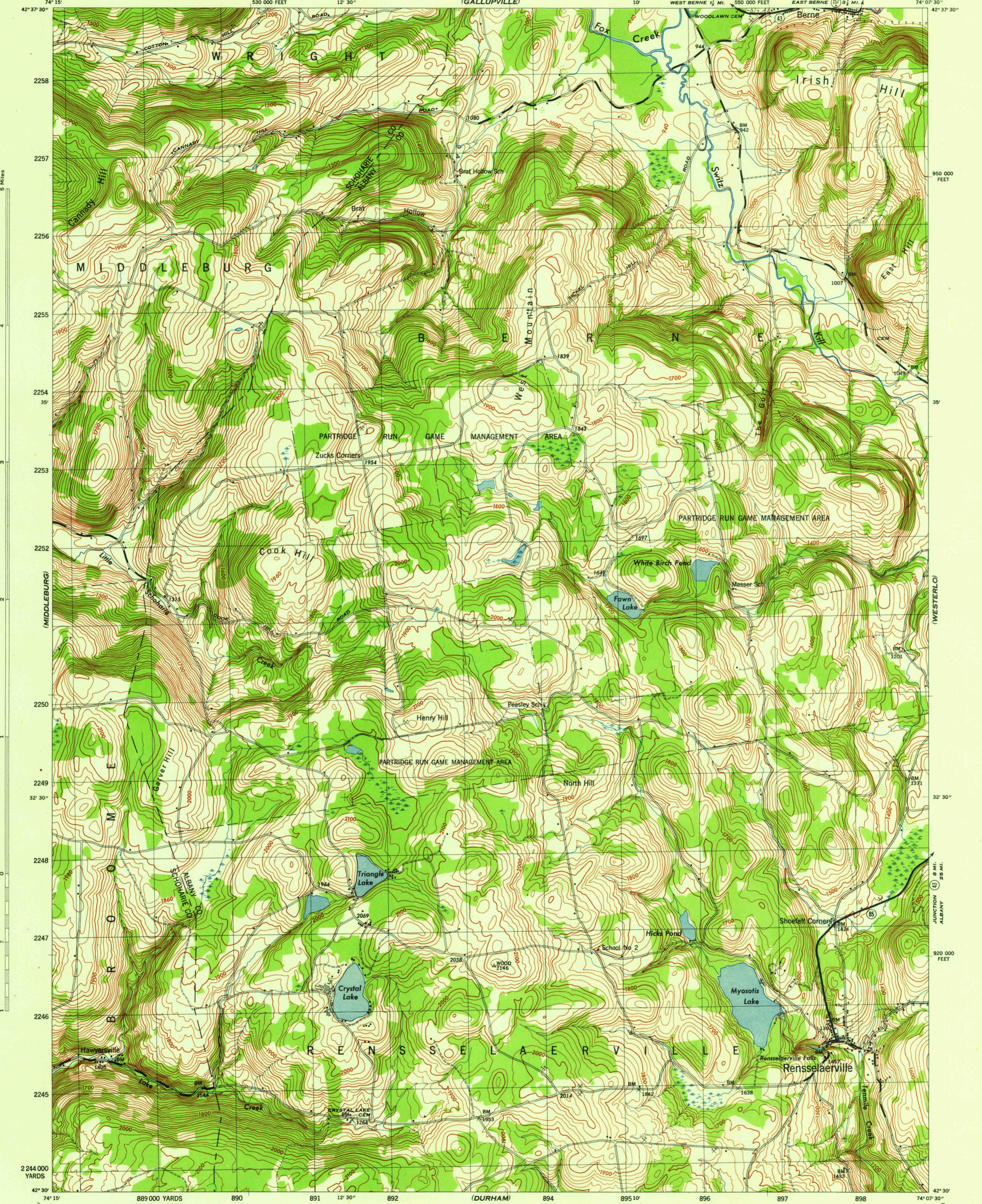
(SCHOHARIE)

NEW YORK
SCALE 1:31,680

WAR DEPARTMENT
CORPS OF ENGINEERS, U. S. ARMY

RENSSELAERVILLE QUADRANGLE
7 1/2 - MINUTE SERIES

(ALTMONT)

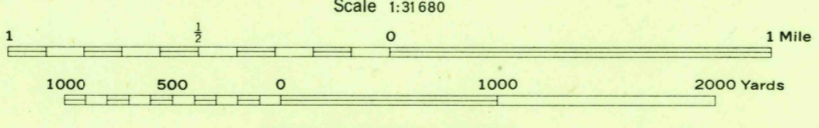


(LIVINGSTONVILLE)

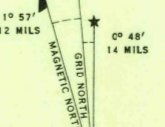
Mapped by Tennessee Valley Authority under direction of the Chief of Engineers, U. S. Army, 1944.
Control by USCGS and TVA.
Topography by U. S. Geological Survey and Tennessee Valley Authority by Stereophotogrammetric methods (Multiplex).
Field completion surveys by TVA.
Wide-angle photography for TVA, 1943.
Polyconic projection. 1927 North American datum.

ROAD CLASSIFICATION
1944
Dependable hard-surface, heavy-duty road. U. S. Route (7)
Secondary, hard-surface, all-weather road. State Route (20)
Loose-surface graded, dry weather road.
Dirt road.
More than two lanes indicated by note along road with tick at point of change. 3 LANE 4 LANE

THIS MAP COMPLIES WITH THE NATIONAL STANDARD MAP ACCURACY REQUIREMENTS.



ONE THOUSAND YARD GRID COMPUTED FROM "GRID SYSTEM FOR PROGRESSIVE MAPS IN THE U. S. ZONE A, U. S. C. & S. SPECIAL PUBLICATION NO. 89" THE LAST THREE DIGITS OF THE GRID NUMBERS ARE OMITTED.
TEN THOUSAND FOOT GRID BASED ON NEW YORK PLANE COORDINATE SYSTEM, EASTERN ZONE
NOTE: OFFICERS USING THIS MAP WILL ADD CORRECTIONS AND ADJUSTMENTS WHICH COME TO THEIR ATTENTION AND MAIL DIRECT TO THE ARMY MAP SERVICE, WASHINGTON, D. C.



REPRODUCED BY THE TENNESSEE VALLEY AUTHORITY
AMS NO. 12183

RENSSELAERVILLE, N. Y.
N4230-W7407.5/7.5
EDITION OF 1948

USGS
Historical File
Topographic Division

(GREENVILLE)