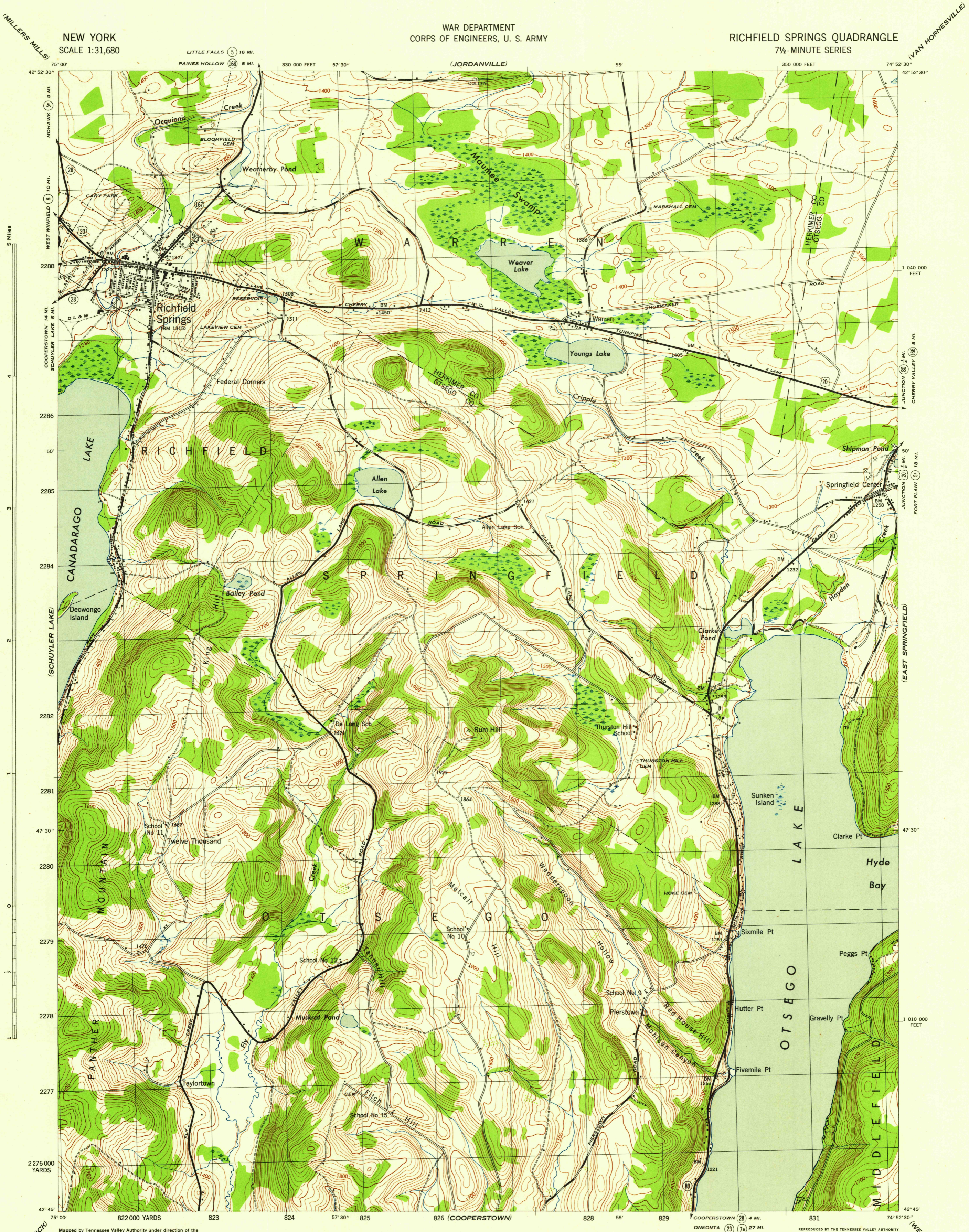


NEW YORK  
SCALE 1:31,680

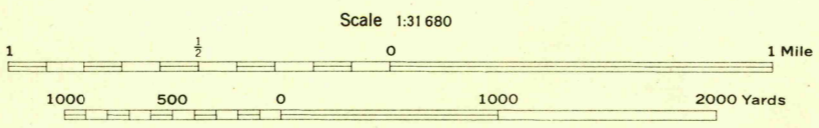
WAR DEPARTMENT  
CORPS OF ENGINEERS, U. S. ARMY

RICHFIELD SPRINGS QUADRANGLE  
7 1/2-MINUTE SERIES



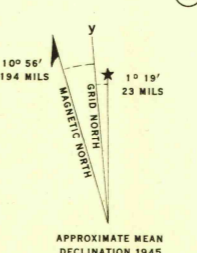
Map by Tennessee Valley Authority under direction of the Chief of Engineers, U. S. Army, 1943.  
Control by USGS and TVA.  
Topography by U. S. Geological Survey and Tennessee Valley Authority by stereophotogrammetric methods (Multiplex).  
Field completion surveys by TVA.  
Wide-angle photography by TVA, 1942.  
Polyconic projection, 1927 North American datum.

**ROAD CLASSIFICATION**  
1943  
Dependable hard surface, loose surface graded, heavy-duty road, all-weather road.  
Secondary, hard-surface, all-weather road.  
Dirt road.  
State Route (7)  
U. S. Route (20)  
More than two lanes indicated by note along road with tick at point of change. 2 LANE 1-4 LANE



CONTOUR INTERVAL 20 FEET  
DATUM IS MEAN SEA LEVEL

ONE THOUSAND YARD GRID COMPUTED FROM GRID SYSTEM FOR PROGRESSIVE MAPS IN THE U. S. - ZONE A, U. S. G. & S. SPECIAL PUBLICATION NO. 59  
THE LAST THREE DIGITS OF THE GRID NUMBERS ARE OMITTED  
TEN THOUSAND FOOT GRID BASED ON NEW YORK PLANE COORDINATE SYSTEM, EASTERN ZONE  
NOTE: OFFICERS USING THIS MAP WILL MAKE NEAR CORRECTIONS AND ADJUSTIONS WHICH COME TO THEIR ATTENTION AND WILL DIRECT TO "THE CHIEF OF ENGINEERS, WASHINGTON, D. C."



USGS  
Historical File  
Topographic Division

RICHFIELD SPRINGS, N. Y.  
N4245-W7452.5/7.5  
EDITION OF 1945

THIS MAP COMPLIES WITH THE NATIONAL STANDARD MAP ACCURACY REQUIREMENTS.