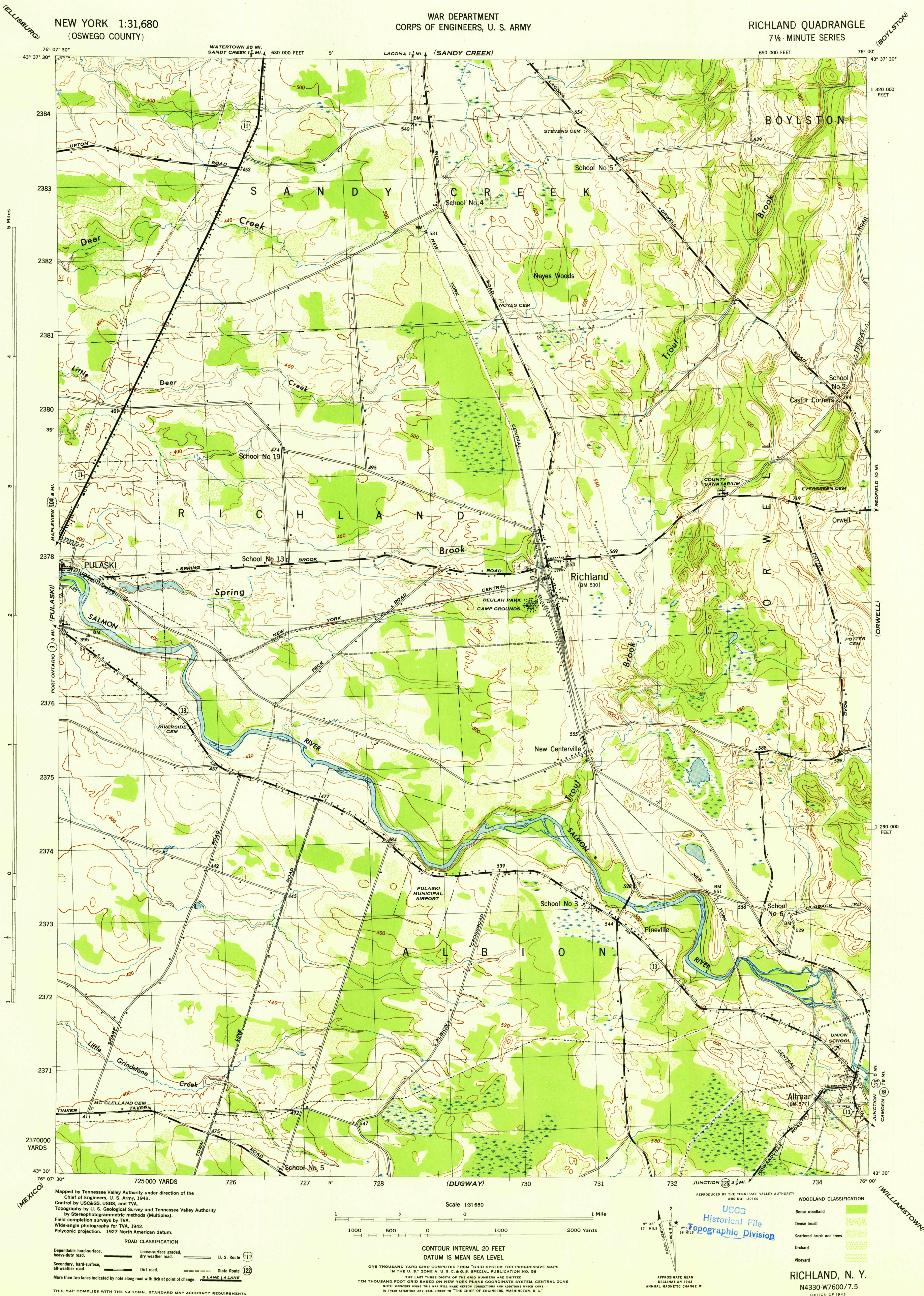


NEW YORK 1:31,680
(OSWEGO COUNTY)

WAR DEPARTMENT
CORPS OF ENGINEERS, U. S. ARMY

RICHLAND QUADRANGLE
7 1/2 - MINUTE SERIES



Map by Tennessee Valley Authority under direction of the
Chief of Engineers, U. S. Army, 1943.
Control by USCGS, USGS, and TVA.
Topography by U. S. Geological Survey and Tennessee Valley Authority
by Stereophotogrammetric methods (Multiplex).
Field completion surveys by TVA.
Wide-angle photography for TVA, 1942.
Polyconic projection. 1927 North American datum.

ROAD CLASSIFICATION
Dependable hard-surface, heavy-duty road. U. S. Route 111
Loose-surface graded, dry weather road. State Route 122
Secondary, hard-surface, all-weather road.
Dirt road.
More than two lanes indicated by note along road with tick at point of change. 3 LANE 2 LANE
THIS MAP COMPLIES WITH THE NATIONAL STANDARD MAP ACCURACY REQUIREMENTS.

Scale 1:31,680
1 000 500 0 1000 2000 Yards
CONTOUR INTERVAL 20 FEET
DATUM IS MEAN SEA LEVEL
ONE THOUSAND YARD GRID COMPUTED FROM "GRID SYSTEM FOR PROGRESSIVE MAPS
IN THE U. S. ZONE A, U. S. C. & G. S. SPECIAL PUBLICATION NO. 95
THE LAST THREE DIGITS OF THE GRID NUMBERS ARE OMITTED
TEN THOUSAND FOOT GRID BASED ON NEW YORK PLANE COORDINATE SYSTEM, CENTRAL ZONE
NOTE: OFFICERS USING THIS MAP WILL MARK BENCH CORRECTIONS AND ADJUSTMENTS WHICH COME
TO THEIR ATTENTION AND MAIL DIRECT TO THE CHIEF OF ENGINEERS, WASHINGTON, D. C."

USCGS
Historical File
Topographic Division
APPROXIMATE MEAN
DECLINATION 1° 30'
ANNUAL MAGNETIC CHANGE 0'

WOODLAND CLASSIFICATION
Dense woodland
Dense brush
Scattered brush and trees
Orchard
Vineyard

RICHLAND, N. Y.
N4330-W7600/7.5
EDITION OF 1943