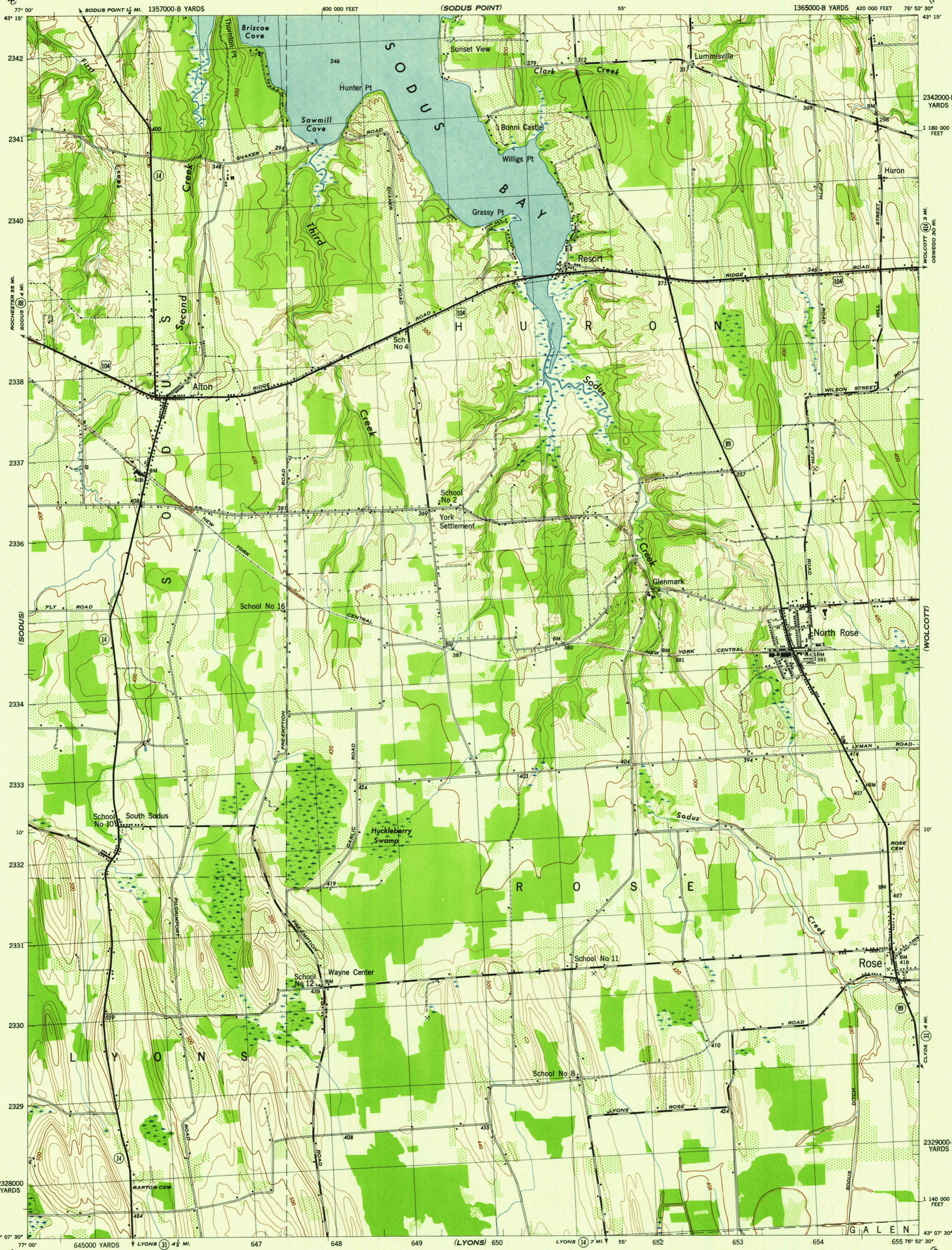


NEW YORK 1:31,680
(WAYNE COUNTY)

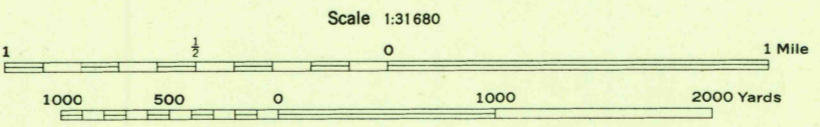
WAR DEPARTMENT
CORPS OF ENGINEERS, U. S. ARMY

ROSE QUADRANGLE
7 1/2 - MINUTE SERIES



Map by Tennessee Valley Authority under direction of the Chief of Engineers, U. S. Army, 1943.
Control by USGS, USGS, and TVA.
Topography by U. S. Geological Survey and Tennessee Valley Authority by Stereophotogrammetric methods (Multiplex).
Field completion surveys by TVA.
Wide-angle photography by TVA, 1942.
Polyconic projection. 1927 North American datum.

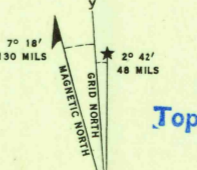
ROAD CLASSIFICATION
Dependable hard-surface, heavy-duty road. U. S. Route State Route
Secondary hard-surface, all-weather road. Dirt road.
More than two lanes indicated by note along road with tick at point of change. 3 LANE 4 LANE
THIS MAP COMPLETES WITH THE NATIONAL STANDARD MAP ACCURACY REQUIREMENTS.



Scale 1:31,680
CONTOUR INTERVAL 20 FEET
DATUM IS MEAN SEA LEVEL

ONE THOUSAND YARD GRID COMPUTED FROM "GRID SYSTEM FOR PROGRESSIVE MAPS IN THE U. S." ZONE A, U. S. C. & G. S. SPECIAL PUBLICATION NO. 89
THE "3" 6000 IS INDICATED BY BARKER TICKS
THE LAST THREE DIGITS OF THE GRID NUMBERS ARE OMITTED
TEN THOUSAND FOOT GRID BASED ON NEW YORK PLANE COORDINATE SYSTEM, CENTRAL ZONE
NOTE: OFFICERS USING THIS MAP WILL HAVE NEEDED CORRECTIONS AND ADJUSTMENTS WHICH COME TO THEIR ATTENTION ARE PAID DIRECT TO THE CHIEF OF ENGINEERS, WASHINGTON, D. C.

REPRODUCED BY THE TENNESSEE VALLEY AUTHORITY 120072



USGS
Historical File
Topographic Division

WOODLAND CLASSIFICATION

Dense woodland	
Dense brush	
Scattered brush and trees	
Orchard	
Vineyard	

ROSE, N. Y.
N4307.5-W7652.5/7.5
EDITION OF 1943